

Ryelands Park

Community newsletter

ISSUE 1 - WINTER/SPRING 2016

Vision

"A sustainable community space that is flexible enough for events, or for people to simply appreciate the beauty of the park."

Developed by the community as part of the masterplan consultation 2012

Welcome to the first issue of the Ryelands Park Community Newsletter. So much has happened since the initial consultation and establishment of the Friends of Ryelands Park that we wanted to reflect on these achievements and let people know what's happening next.

We would also like to thank all the individuals, groups and funders who have supported us in these achievements.

"I find it amazing how much work has already taken place to improve our park and I'm really grateful to all those of you who have supported and helped us along the way. Hopefully by reading this first edition of our newsletter it'll encourage more of you to become involved," Councillor Karen Leytham, chair of the Friends of Ryelands Park.

We plan to issue the newsletter at least once a year, but all future issues will be electronic so don't forget to sign-up to receive future editions! You can sign up by completing the online form at: www.lancaster.gov.uk/ryelandspark.



Masterplan Update

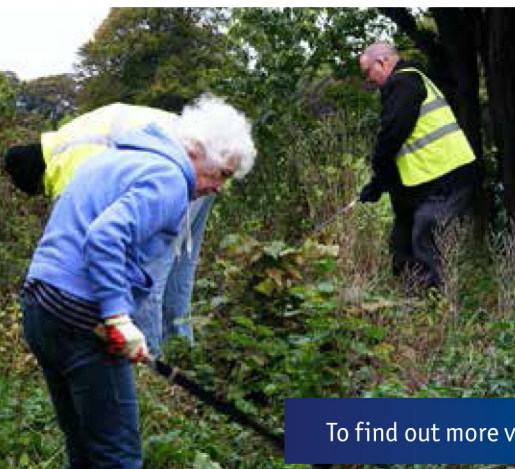
The masterplan for the park was developed and adopted in 2012 after numerous community events. Since then Lancaster City Council and Friends of Ryelands Park (formed in 2012) have worked together to secure funding for the park and to date the following has been delivered:

- New Accessible Play Area, developed at a cost of around £80,000.
- Funding for the play area, which was a joint venture between the Friends, Loyne School and the council, was provided by United Utilities and the Lancashire Environmental Fund.
- Various new benches have been added around the park after requests from the public during the consultations which informed the Masterplan.



Active Parks

Working with Lancaster University who provided the funding; the Friends, members of the public and Lancaster City Council have developed a draft and prototype of a fitness station (the interactive glockenspiel) for the proposed Active Parks trail within the park. This project has gone on to be presented by Prof Emmanuel Tseklevs worldwide with much interest. We just need funding and someone to lead the project to take it forward! The report is available to view at www.lancaster.gov.uk/ryelandspark



Friends of Ryelands Park

Do you have a burning desire to take pride in your community and help improve Ryelands Park? If so then the Friends of Ryelands Park (FoRP) wants to hear from you!

FoRP was set up by a committed band of community representatives in 2012. Over the last three years they have undertaken a variety of voluntary work and helped to raise money for many of the recent improvements.

- Contemporary wildflower area with funding from Lancashire County Council and Lancashire Green Spaces.
- Cleared shrubs with help from Inspire Lancaster, Scouts and with additional support from the city council and the Community Payback team.
- New orchard area
- 'This Side of the River' Festival - an arts/music festival in the park organised with help from the Dukes and local schools. Events included performances from local bands, geo-caching and interactive xylophone. The event finished by attempting a world record for the number of people wearing moustaches and wellies doing the conga!

Coun David Smith, Cabinet member with responsibility for parks and open spaces, said: "There is a fantastic amount of work taking place in Ryelands Park and everyone who has volunteered so far to help shape its future for the benefit of those living in their local community and beyond should be rightly proud of what has already been achieved."

By joining the group you can help to improve your local park. Help is especially needed for the monthly work days which help to tidy and make small improvements. All ages are welcome, including families, and there are hot drinks available after your hard work!

- Volunteers are also required for activities including fundraising, Facebook, publicity, accounts, designing posters etc.
- Meetings are held on the evening of every 2nd Tuesday of the month at Father's House.
- Work days are held on 1st Sunday of the month, meeting at 1:30pm at Old Man's Rest, the building between Ryelands House and the multi-use games area.

To find out more visit www.facebook.com/RyelandsPark or to join email Friendsofryelandspark@gmail.com

Current Projects

BMX Pump Track

Plans are being developed by Proffitts, a community interest company, and the Friends for a BMX track on the grassy slope between the existing football pitches and Route 6 cycle path which runs along the railway line.

Consultation is now open with questionnaires going to local schools, or you can have your say at www.surveymonkey.com/r/lancasterskatebmx (any wider comments can be made to the email addresses at the end of the newsletter).

More information and the proposed design is available by visiting www.proffittscic.com/community-projects.

Pavilion

The old pavilion unfortunately had to be demolished in December. Despite efforts to find a viable use for the building, the cost of bringing it up to scratch would have been too great. The building was last open in 2006 and suffered a great deal of damage from floods in 2008/09, which caused most of the ceilings to collapse. The building footprint will be excavated and landscaped.

Future projects

- The aim of the Active Parks project is to develop a 'health trail' that offers a new way of motivating and taking physical activity to local people in their park. This may include fitting different levels of physical activity into a general walk or dog walking schedule, the use of new technology to link to further information or perhaps the use of games. Lancaster University and Lancashire County Council are currently working to secure funding to take this forward.
- We are seeking funding of approximately £50,000 for a new Multi Use Games Area (MUGA) which is in keeping with the new fresh look of the park. With this in place the fencing of the old MUGA will be removed to allow temporary additional parking.
- Detailed plans and costings have been worked up to improve car parking. Funding for the scheme still needs to be identified.
- We hope to formalise the 'desire line' footpath across the park which is largely used by students attending Our Ladies Catholic School. With this in place we will be able to formalise 1km and 2km running/walking routes.
- In the long-term a permanent community café is proposed. To determine if this is a viable option we will be looking at the possibility of mobile concession stands operating from next summer.
- We would like your feedback on the future of the Ryelands Bandstand. It is currently fenced off for safety, but where do you see its future? Should it be demolished, or do you think it deserves the money to be preserved?





Events

Over the last 12 months the demand for Ryelands Park has increased, with event organisers drawn to the favourable layout and ideal location of the park in relation to the city centre. In 2015 Ryelands Park hosted seven key events which attracted tens of thousands of visitors to the park.

In order to improve emergency access routes to accommodate these events, additional removable bollards have been installed to create a secondary emergency route into the park and yellow lines added along the path leading to Ryelands House to encourage use of the available car parks.

Lancaster City Council have recently invested in improving the drainage of the land hired out for events to provide a more suitable surface and reduce damage to the ground which is usually caused during the set up and dismantling of the larger events.

Upcoming events

- **Lancaster Mega Value Fun Park** 13–22 Apr 2016
- **26th Annual Giant Car Boot Sale** Monday 2 May 2016
(Rotary Club of Carnforth Car Boot)
- **Taylor's Funfair** 20–28 May 2016

Upcoming events are advertised on our website. For more information go to www.lancaster.gov.uk and search for 'events on council land'.



Football

The 2015/16 football season is in progress with three adult teams and three junior making use of the football pitches and changing facilities available at the park.

Lancaster City Council is currently in discussion with the Service to Youth league about the possibility of converting the full-size pitch next to Torrisholme Road into dedicated junior pitches in order to increase the number available to the league.

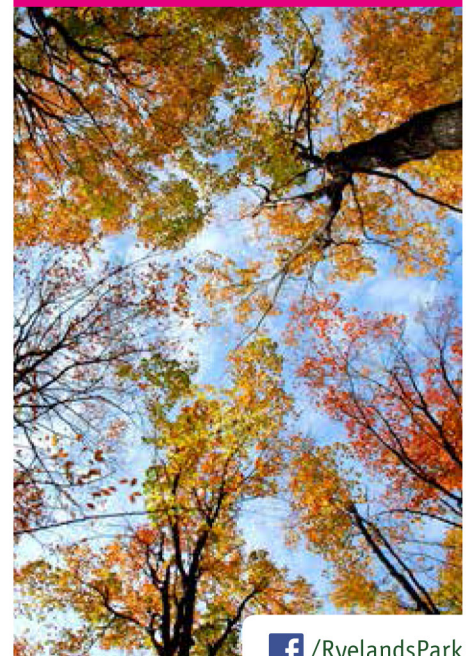
The Friends group have recently been working alongside the footballers to keep the park litter free, by providing portable litter bins for their use during games, and encouraging good practices by litter picking the surrounding park. Since then, litter has reduced dramatically.

Outdoor rangers

Two new members of staff have joined to help oversee and assist in the city council's parks and open spaces. Barbara and Richard will be visiting Ryelands Park twice a week to carry out inspections and help manage the football pitches until the season finishes in March 2016.

General

- **Trees** - we are looking for people to help map and look after trees in the park and the surrounding area. Training will run early next year. Please let us know if you would be interested.
- **Safety routes** - New double yellow line marking have gone down to keep safety routes clear for emergency service access.
- **Nippers** - welcome to their new home in the old coach house.
- **Police room** - We welcome the community police officers who are now sharing a space with the Friends of Ryelands Park within the Old Man's Rest.

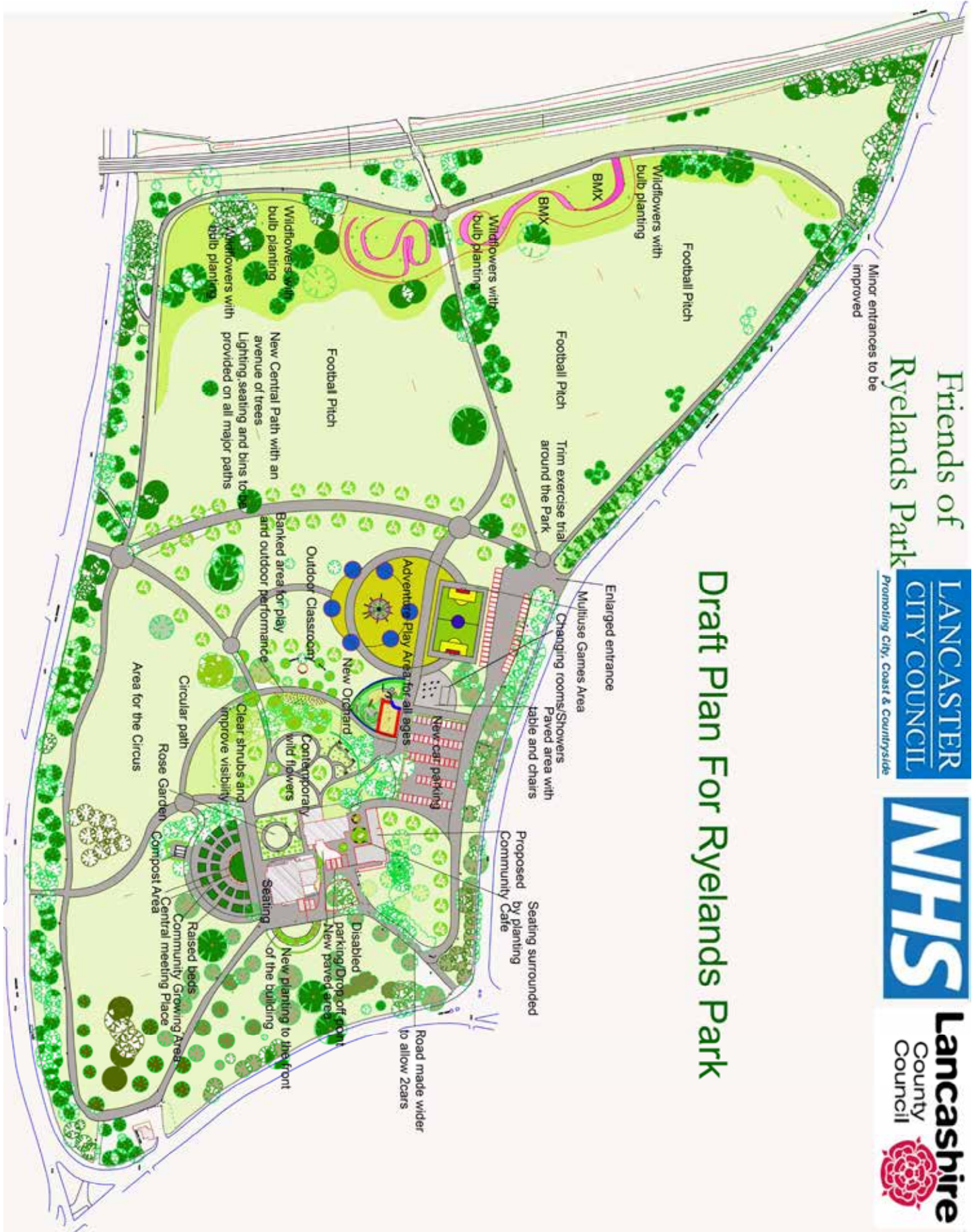


Comments

We'd love to hear your views on any of our parks. Take part in our park health check at www.lancaster.gov.uk/park-health-check and let us know what you think, or email us on publicrealm@lancaster.gov.uk.



The Ryelands Park Masterplan



Friends of Ryelands Park



Draft Plan For Ryelands Park