

Adopted Strategic Policies and Land Allocations Policy Maps

Rural Villages

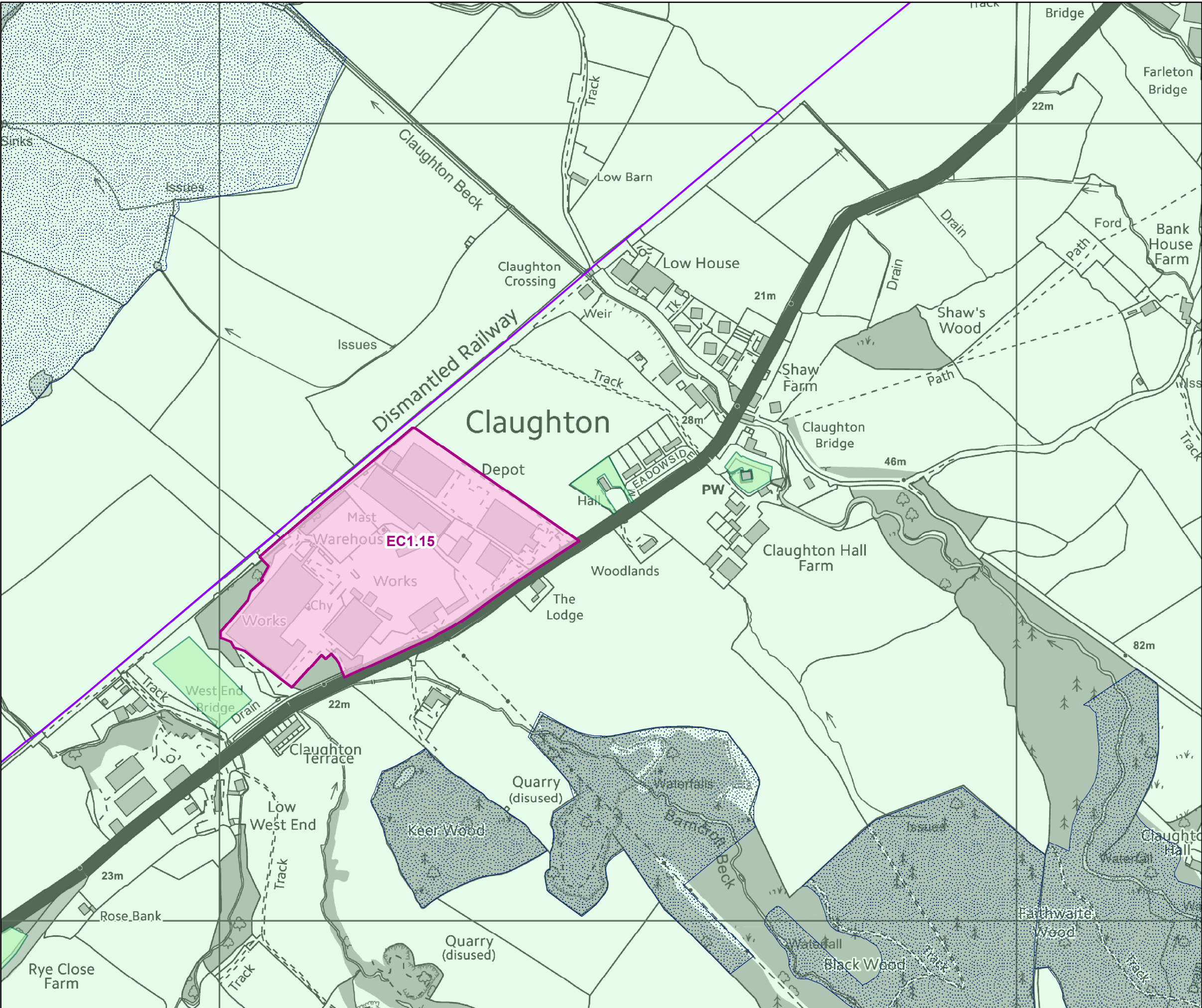
July 2020

* These designations are made separately to the Local Plan process and may be subject to change.

** The Yorkshire Dales National Park Authority is responsible for all planning matters within the park boundary.

*** Please see the District Wide Policies Map for areas identified as Suitable for Wind Energy and Mineral & Waste areas.

Strategic Policies and Land Allocations Policies Map - Claughton



Legend

The Economy & Employment

EC1 - Established Employment Areas

The Natural Environment

EN2 - Area of Outstanding Natural Beauty

EN3 - Open Countryside

EN7 - Environmentally Important Areas

 Regional*

Sustainable Communities

SC3 - Open Space, Recreation and Leisure

Transports, Accessibility & Connectivity

T2 - Cycling Network

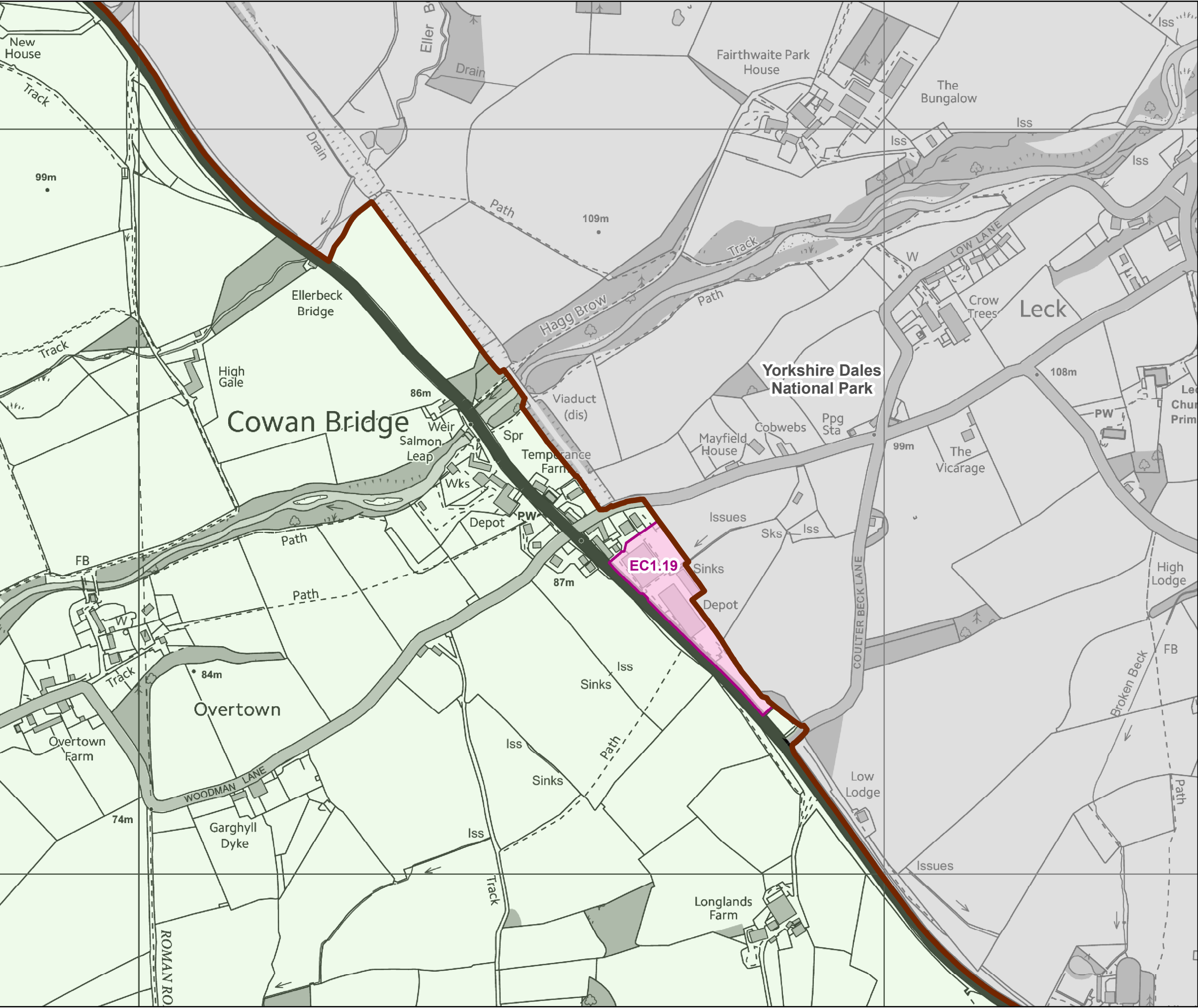
— Existing Cycle Route

— Aspirational Cycle Route



LANCASTER
CITY COUNCIL
Promoting City, Coast & Countryside

Strategic Policies and Land Allocations Policies Map - Cowan Bridge



Legend

The Economy & Employment

EC1 - Established Employment Areas

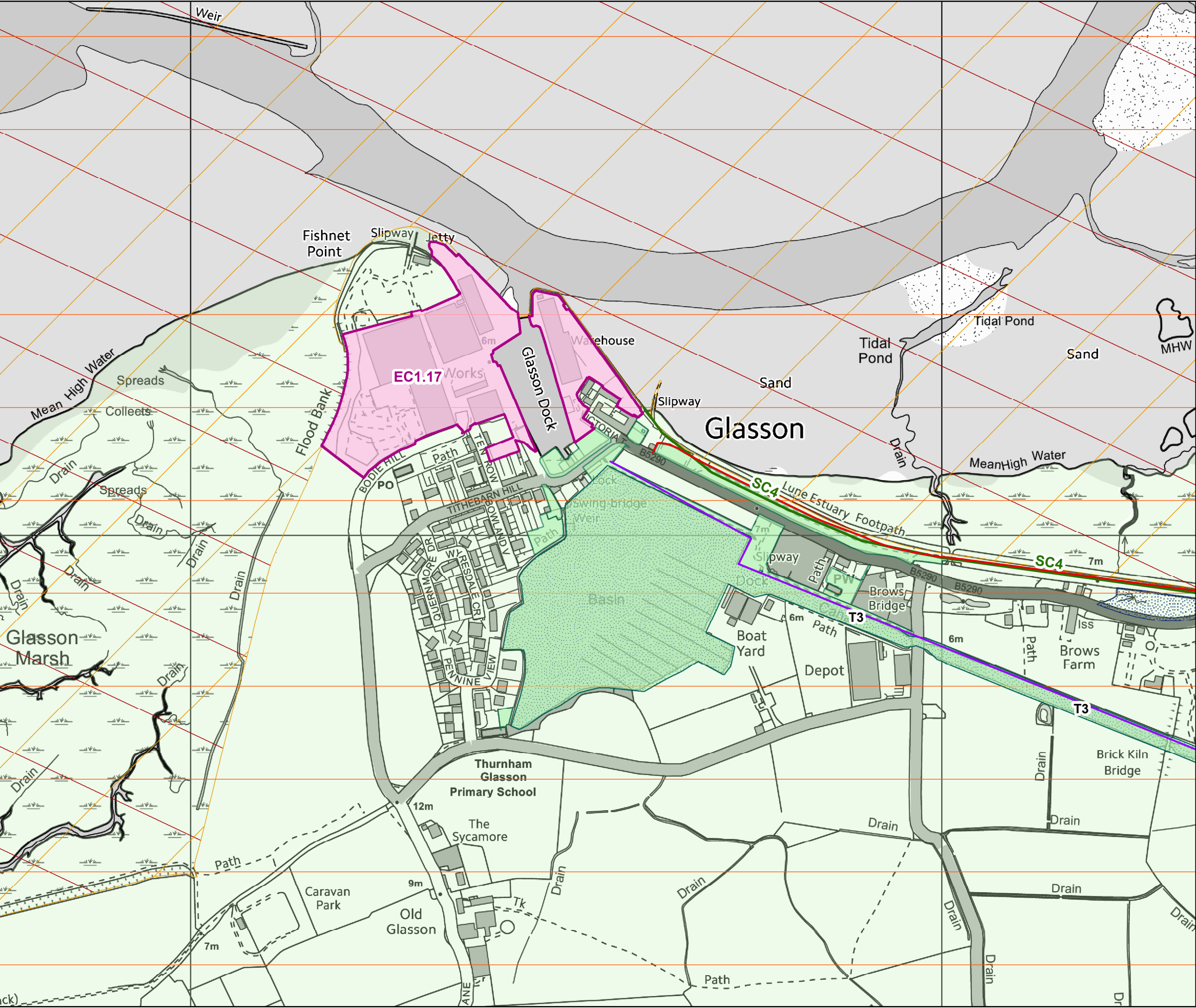
The Natural Environment

EN3 - Open Countryside

Yorkshire Dales National Park**



Strategic Policies and Land Allocations Policies Map - Glasson Dock

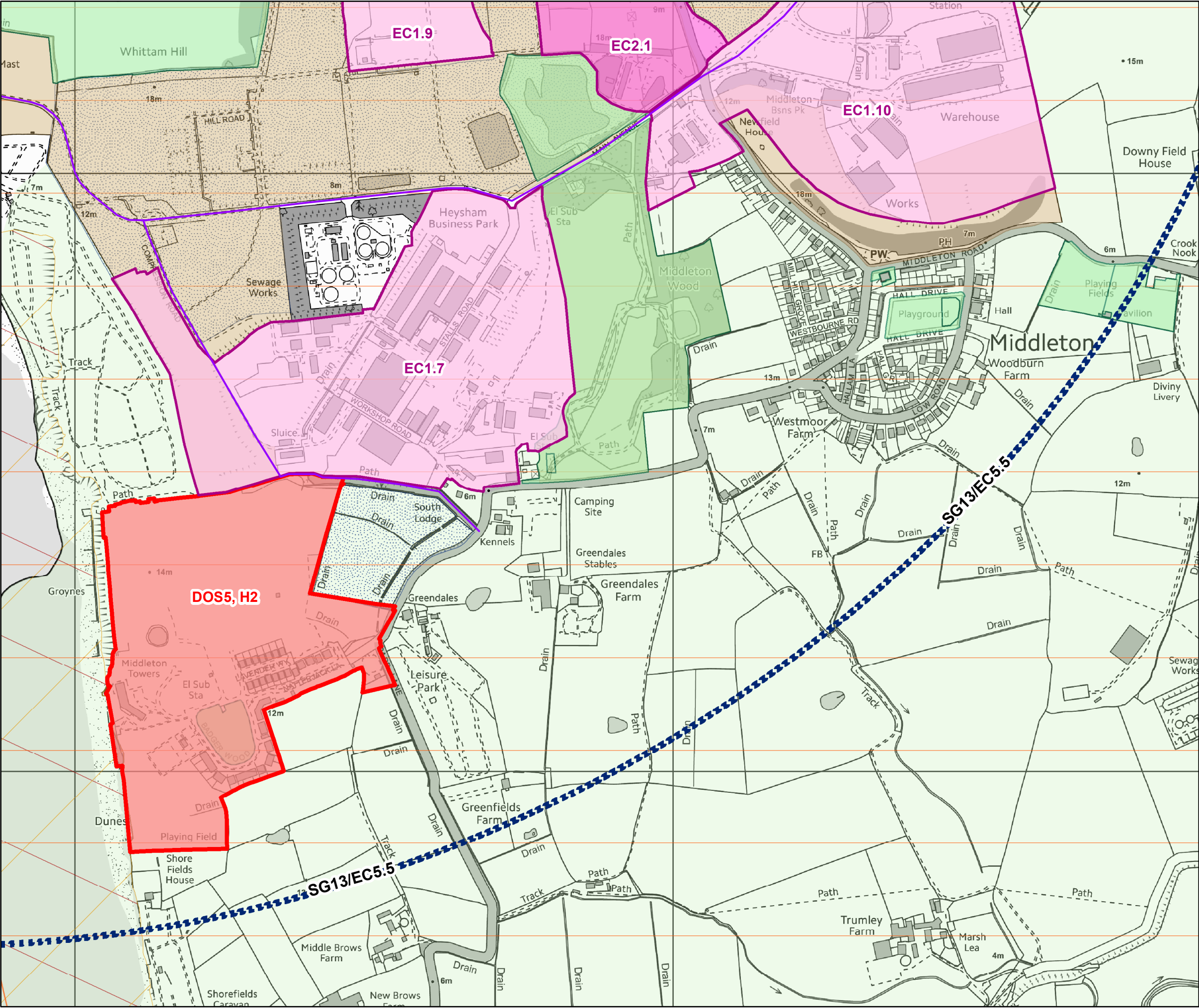


Legend

- The Economy & Employment**
- EC1 - Established Employment Areas
- The Natural Environment**
- EN3 - Open Countryside
 - EN7 - Environmentally Important Areas
 - International*
 - National*
 - Regional*
 - Nature Improvement Area
- Sustainable Communities**
- SC3 - Open Space, Recreation and Leisure
 - SC4 - Green Space Network Lines
- Transports, Accessibility & Connectivity**
- T2 - Cycling Network
 - Existing Cycle Route
 - Aspirational Cycle Route
 - T3 - Lancaster Canal



Strategic Policies and Land Allocations Policies Map - Middleton



Legend

The Economy & Employment

EC1 - Established Employment Areas

EC2 - Future Employment Growth

SG13/EC5.5 - Heysham Gateway

Development Opportunity Sites (DOS)

Development Opportunity Sites

The Natural Environment

EN3 - Open Countryside

EN7 - Environmentally Important Areas

International*

National*

Regional*

Nature Reserve*

Nature Improvement Areas

Sustainable Communities

SC3 - Open Space, Recreation and Leisure

Transport, Accessibility and Connectivity

T2 - Cycling Network

Existing Cycle Route

Aspirational Cycle Route

