

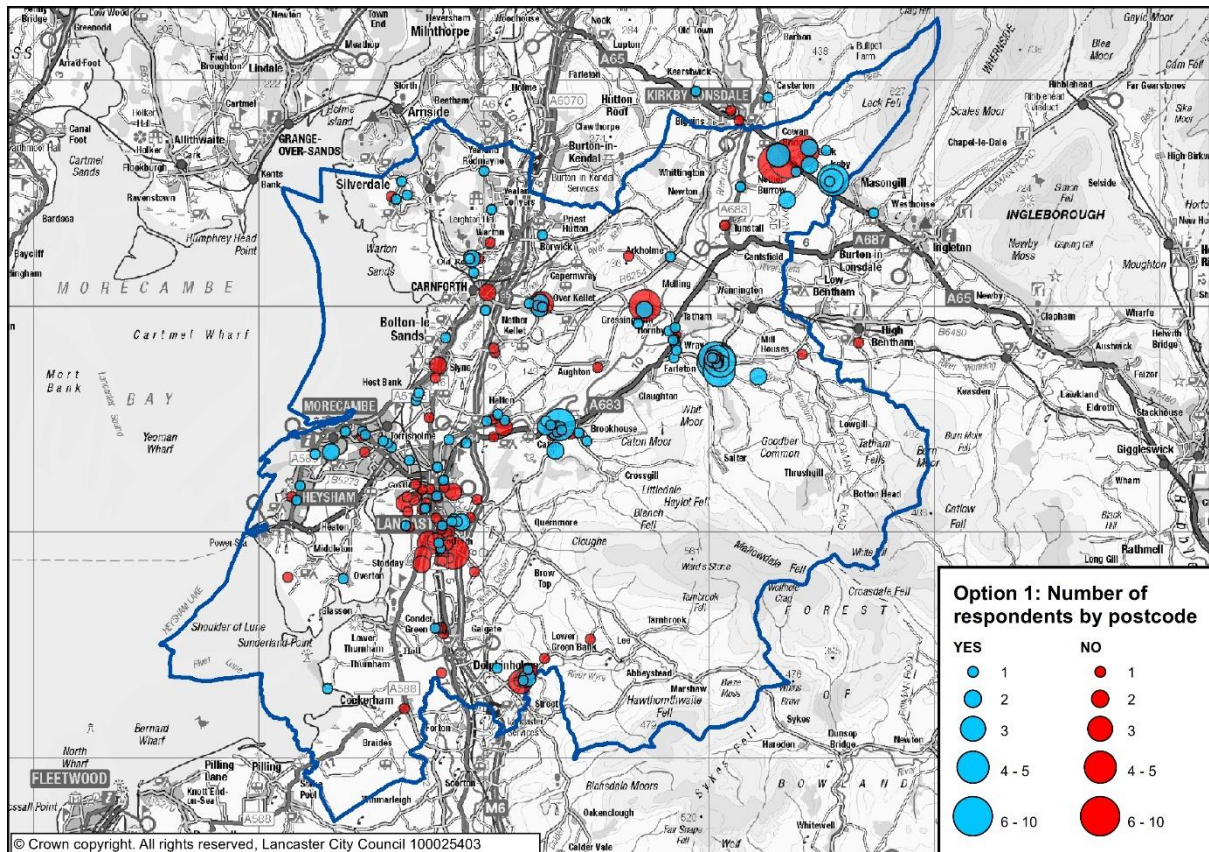
Appendix 5: Postcode Analysis

Option 1: Single urban extension

There was support for this option across the district, however, this was particularly high in some of the rural areas ie Wray, Cowan Bridge and Caton. Interestingly there was some support in the Dolphinholme area.

Opposition was concentrated in the Lancaster area, particularly south Lancaster. There was high opposition in the Cowan Bridge and Hornby areas.

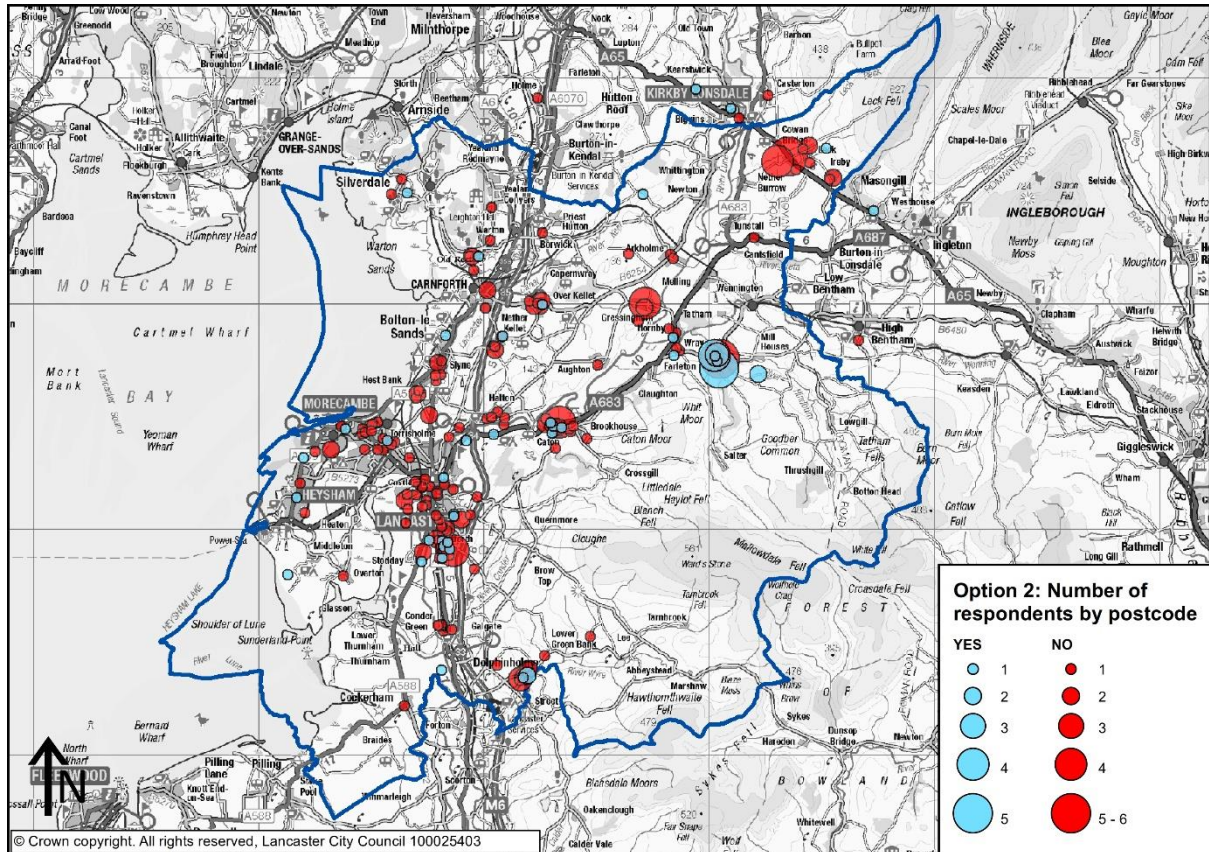
Interestingly there was a split in the Cowan Bridge area, with both support and opposition.



Option 2: Review of Green Belt

The majority of respondents across the district were against this option. Opposition was high in the Cowan Bridge, south Lancaster, Caton, Wray and Hornby areas.

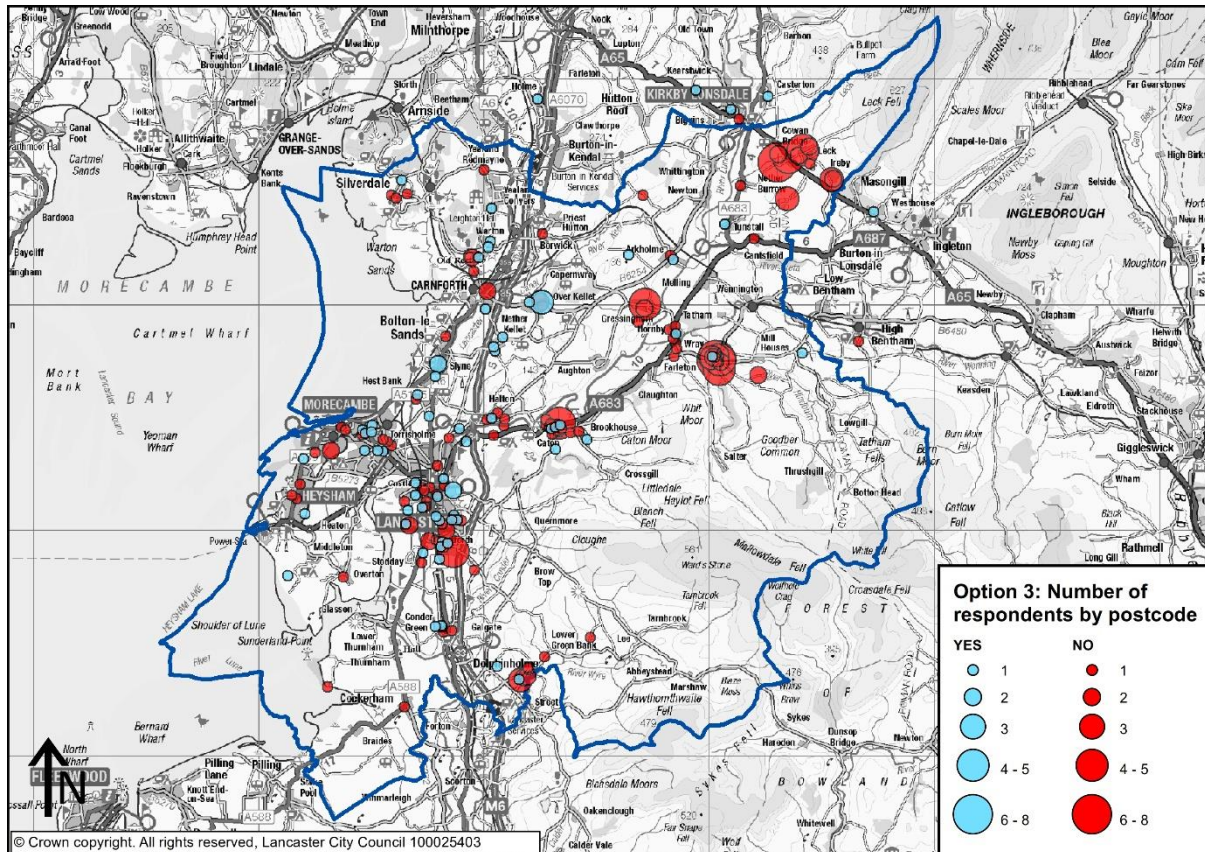
There were small pockets of support across the district although highest support was in Wray.



Option 3: Distribution throughout all district's towns and villages

There was some support across the district for this option, although this was more concentrated in the urban areas.

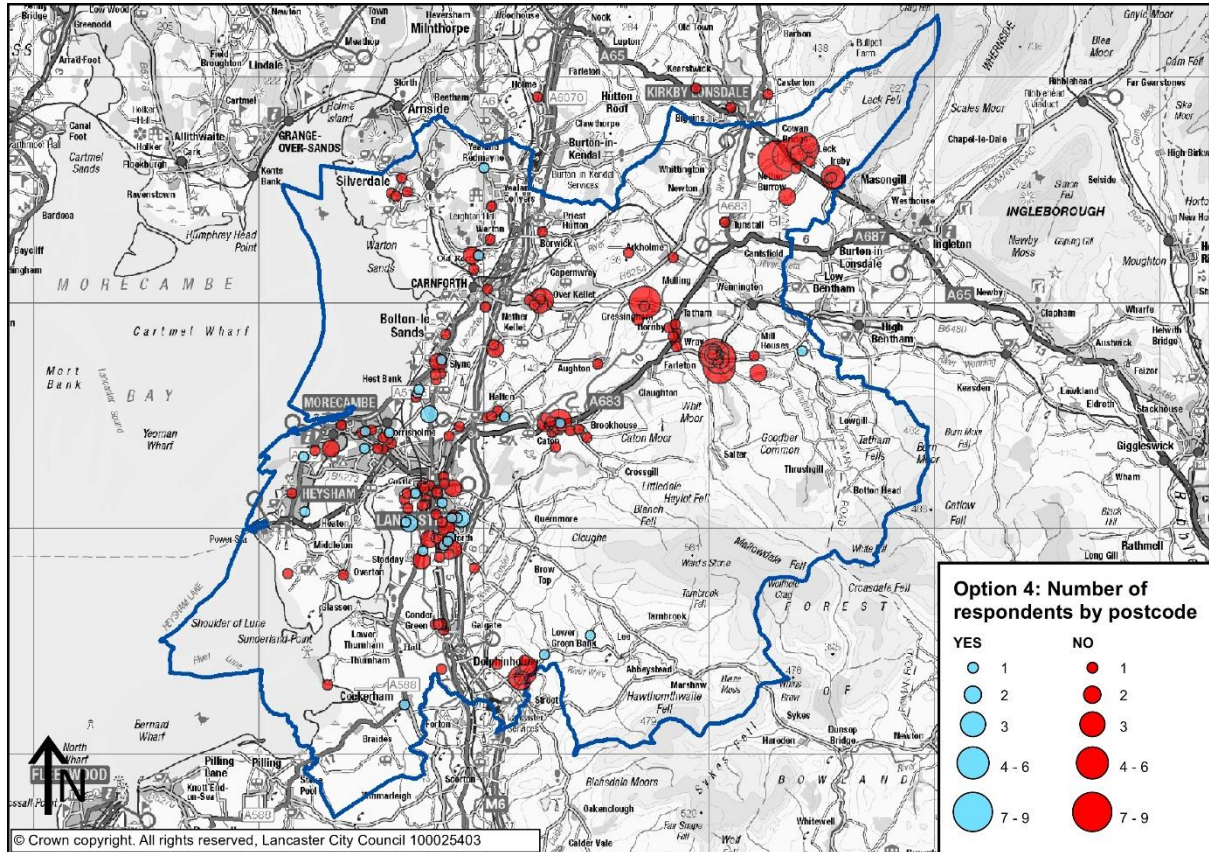
There were particularly large pockets of opposition in the Cowan Bridge, Wray, Hornby, Caton and south Lancaster areas.



Option 4: Large-scale development of two villages

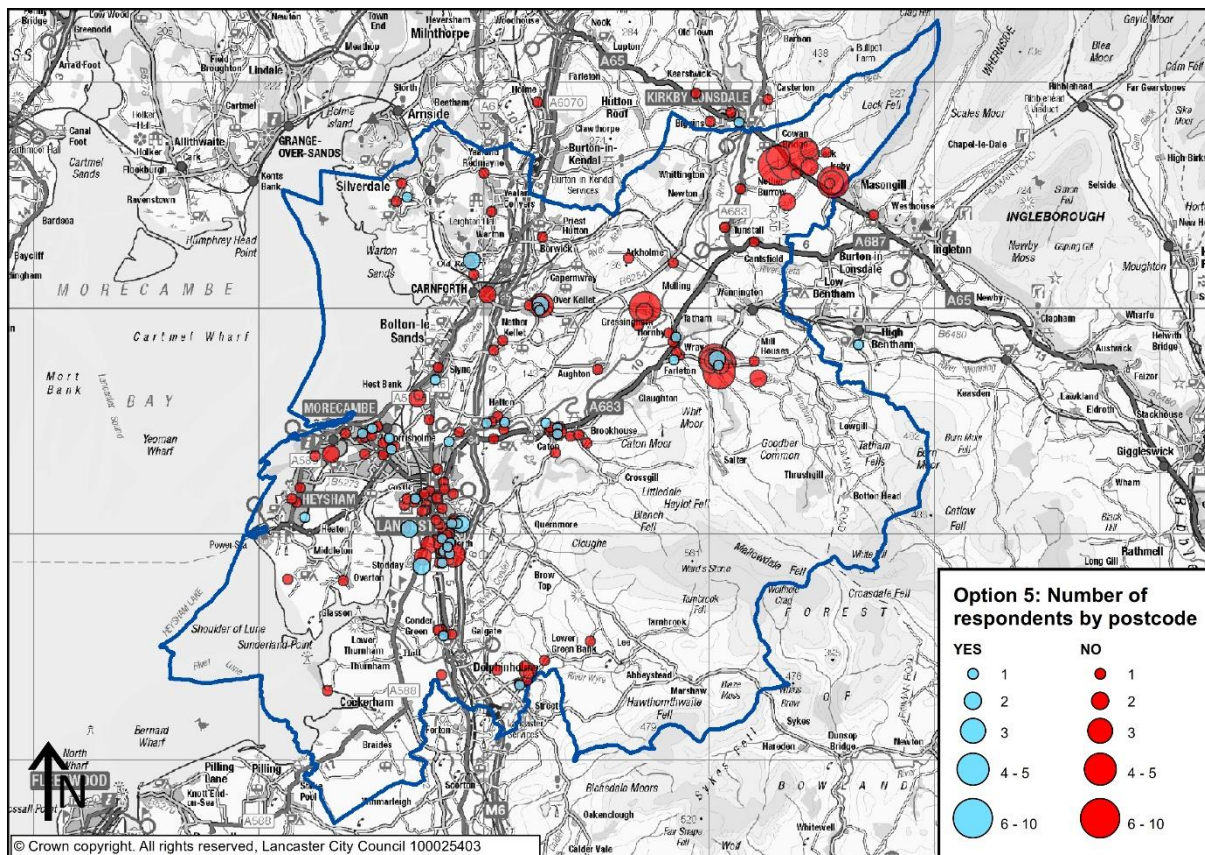
The majority of respondents across the district were against this option. Opposition was high in the Cowan Bridge, Wray, Hornby, Caton, Dolphinholme and Over Kellet areas.

There was some support for this option although this was concentrated in the urban areas of Lancaster, Morecambe, Heysham, Hest Bank and Halton.



Option 5: New settlement

There was some small pockets of support although the majority of respondents opposed this option. There was particularly high opposition in the Cowan Bridge, Wray and Hornby areas.



Conclusion

As expected, many of the rural areas supported option one. In particular residents in, Wray, Cowan Bridge and Caton favoured this option. There was high levels of opposition in south Lancaster and surprisingly Cowan Bridge and Hornby.

Surprisingly, some people in Wray supported a review of the Green Belt although there were also high numbers opposing this including residents in Cowan Bridge, South Lancaster, Caton and Hornby.

As expected, there was more support for distributing development in the urban areas and opposition in the rural areas, particularly, Cowan Bridge, Wray, Hornby, Caton and South Lancaster.

Again as expected, there was more support for the large scale development of two villages from the urban areas and opposition in the rural areas, particularly, Cowan Bridge, Wray, Hornby, Caton and Dolphinhome (potential village).

There was small pockets of support but the majority of respondents opposed the option of a new settlement, particularly, Cowan Bridge, Wray and Hornby.

The postcode analysis demonstrates a wide spread of responses from across the district and reflects community activism in some of the rural areas ie Cowan Bridge, Wray, Hornby and Caton.