



LANCASTER CITY COUNCIL PLAYING PITCH & OUTDOOR SPORT STRATEGY STRATEGY & ACTION PLAN

JANUARY 2024

QUALITY, INTEGRITY, PROFESSIONALISM

Knight, Kavanagh & Page Ltd
Company No: 9145032 (England)

MANAGEMENT CONSULTANTS

Registered Office: 1 -2 Frecheville Court, off Knowsley Street, Bury BL9 0UF
T: 0161 764 7040 E: mail@kcp.co.uk www.kcp.co.uk



Cert Num: 6543-QMS-001

LANCASTER PLAYING PITCH & OUTDOOR SPORTS STRATEGY STRATEGY & ACTION PLAN

CONTENTS

ABBREVIATIONS.....	1
PART 1: INTRODUCTION.....	2
PART 2: VISION AND AIMS	5
PART 3: HEADLINE FINDINGS.....	7
PART 4: SPORT SPECIFIC ISSUES SCENARIOS AND RECOMMENDATIONS.....	10
4.1: Football – grass pitches.....	10
4.2: Third generation turf (3G) pitches	17
4.3: Cricket squares.....	21
4.4: Rugby union - grass pitches.....	24
4.5: Hockey suitable artificial grass pitches (AGPs)	27
4.6: Tennis courts	29
4.7: Athletics	32
4.8: Bowling greens	33
4.9: Rugby league – grass pitches	34
4.10: Cycling	36
4.11: Golf courses.....	37
4.12: Other sports.....	38
PART 5: STRATEGIC RECOMMENDATIONS	39
PART 6: ACTION PLAN.....	53
LANCASTER ANALYSIS AREA	56
HEYSHAM AND MORECAMBE ANALYSIS AREA	64
CARNFORTH / RURAL ANALYSIS AREA.....	56
PART 7: HOUSING GROWTH	79
PART 8: DELIVER THE STRATEGY AND KEEP IT ROBUST AND UP TO DATE.....	82

LANCASTER PLAYING PITCH & OUTDOOR SPORTS STRATEGY STRATEGY & ACTION PLAN

ABBREVIATIONS

3G	Third Generation (artificial turf)
AGP	Artificial Grass Pitch
BARLA	British Amateur Rugby League Association
CC	Cricket Club
DPD	Strategic Policies and Land Allocation Development Plan
ECB	England and Wales Cricket Board
EH	England Hockey
FA	Football Association
FC	Football Club
FE	Further Education
FF	Football Foundation
FIFA	Fédération Internationale de Football Association
FIT	Fields in Trust
FPM	Facilities Planning Model
GI	Green Infrastructure
GIS	Geographical Information Systems
GMA	Grounds Management Association
HC	Hockey Club
KKP	Knight, Kavanagh and Page
LCC	Lancaster City Council
LCF	Lancashire Cricket Foundation
LFA	Lancashire County Football Association
NGB	National Governing Body
NPPF	National Planning Policy Framework
ONS	Office for National Statistics
PPOSS	Playing Pitch and Outdoor Sport Strategy
PPS	Playing Pitch Strategy
RFL	Rugby Football League
RFU	Rugby Football Union
RLFC	Rugby League Football Club
RUFC	Rugby Union Football Club
SE	Sport England
TGR	Team Generation Rates
U	Under
WR	World Rugby

LANCASTER PLAYING PITCH & OUTDOOR SPORTS STRATEGY STRATEGY & ACTION PLAN

PART 1: INTRODUCTION

This is the Playing Pitch & Outdoor Sport Strategy (PPOSS) for Lancaster City Council (LCC). Building upon the preceding updated Assessment Report, it provides a clear, strategic framework in relation to the provision of playing pitch and outdoor sport facilities. It delivers:

- ◀ A vision for the future protection, improvement and development of provision.
- ◀ A series of sport-by-sport scenarios and recommendations.
- ◀ A series of strategic objectives and recommendations.
- ◀ A prioritised area-by-area and site-by-site action plan that prioritises and can address key issues.
- ◀ Guidance as to how the PPOSS can be delivered.

The Strategy is delivered in accordance with Sport England's Playing Pitch Strategy (PPS) Guidance (for playing pitch sports) and Sport England's Assessing Needs and Opportunities Guide (for "non-pitch" sports). Sport England's PPS Guidance details a stepped approach, separated into five distinct sections:

- ◀ Stage A: Prepare and tailor the approach.
- ◀ Stage B: Gather information and views on the supply of and demand for provision.
- ◀ Stage C: Assess the supply and demand information and views.
- ◀ Stage D: Develop the Strategy.
- ◀ Stage E: Deliver the Strategy and keep it robust and up to date.

This report represents Stage D of the process, with stages A-C covered in the preceding Assessment Report and Stage E ongoing once the study is complete.

The ANOG has a similar staged approach, as follows:

- ◀ Stage A: Prepare and tailor the approach.
- ◀ Stage B: Gather information on supply and demand.
- ◀ Stage C: Assessment – bringing the information together.
- ◀ Application: Application of an assessment.

Where not already implemented, the recommendations that come out of this strategy should be translated into local planning policy so that there is a mechanism in place to protect existing provision and to secure investment where the opportunity arises. The lifespan of a PPOSS is considered to be three years, although this can be increased if it is regularly kept up to date. See Part 8: Deliver the Strategy and Keep It Robust and Up to Date.

Agreed scope

The following are the key outdoor sports (and associated facilities, including artificial surfaces) in Lancaster District and as such are included within the scope:

- ◀ Football pitches
- ◀ Third generation turf (3G) pitches
- ◀ Cricket pitches
- ◀ Rugby union pitches
- ◀ Hockey suitable artificial grass pitches (AGPs)
- ◀ Tennis courts
- ◀ Athletics facilities
- ◀ Bowling greens (crown greens)
- ◀ Rugby league pitches

LANCASTER PLAYING PITCH & OUTDOOR SPORTS STRATEGY STRATEGY & ACTION PLAN

- ◀ Cycling facilities
- ◀ Golf facilities
- ◀ Other pitch sports¹

Pitch sports (i.e., football, rugby union, rugby league, hockey and cricket) were assessed using the guidance set out in Sport England's Playing Pitch Strategy (PPS) Guidance: An approach to developing and delivering a Playing Pitch & Outdoor Sports Strategy. In addition, any other grass sport pitches identified during the project will also be included.

Non-pitch facilities (i.e., bowls, tennis, cycling, golf and athletics) were assessed using Sport England's Assessing Needs and Opportunities Guidance (2014).

Extent of the study area

The study covers provision within the Lancaster City Council administrative area. Further to this, sub areas or analysis areas are applied to allow more localised assessment of provision and examination of supply and demand at a local level. Use of analysis areas allows local circumstances and issues to be taken into account. It should be noted that sports catchment areas do not naturally fall within these same analysis areas and can be either larger or cross over analysis areas. The analysis areas are for reporting purposes only and should not be used to compare provision between areas.

The District is divided into three analysis areas (as seen in Figure 1.1 overleaf) which broadly align with other sub-areas used for planning purposes and open space studies, as follows:

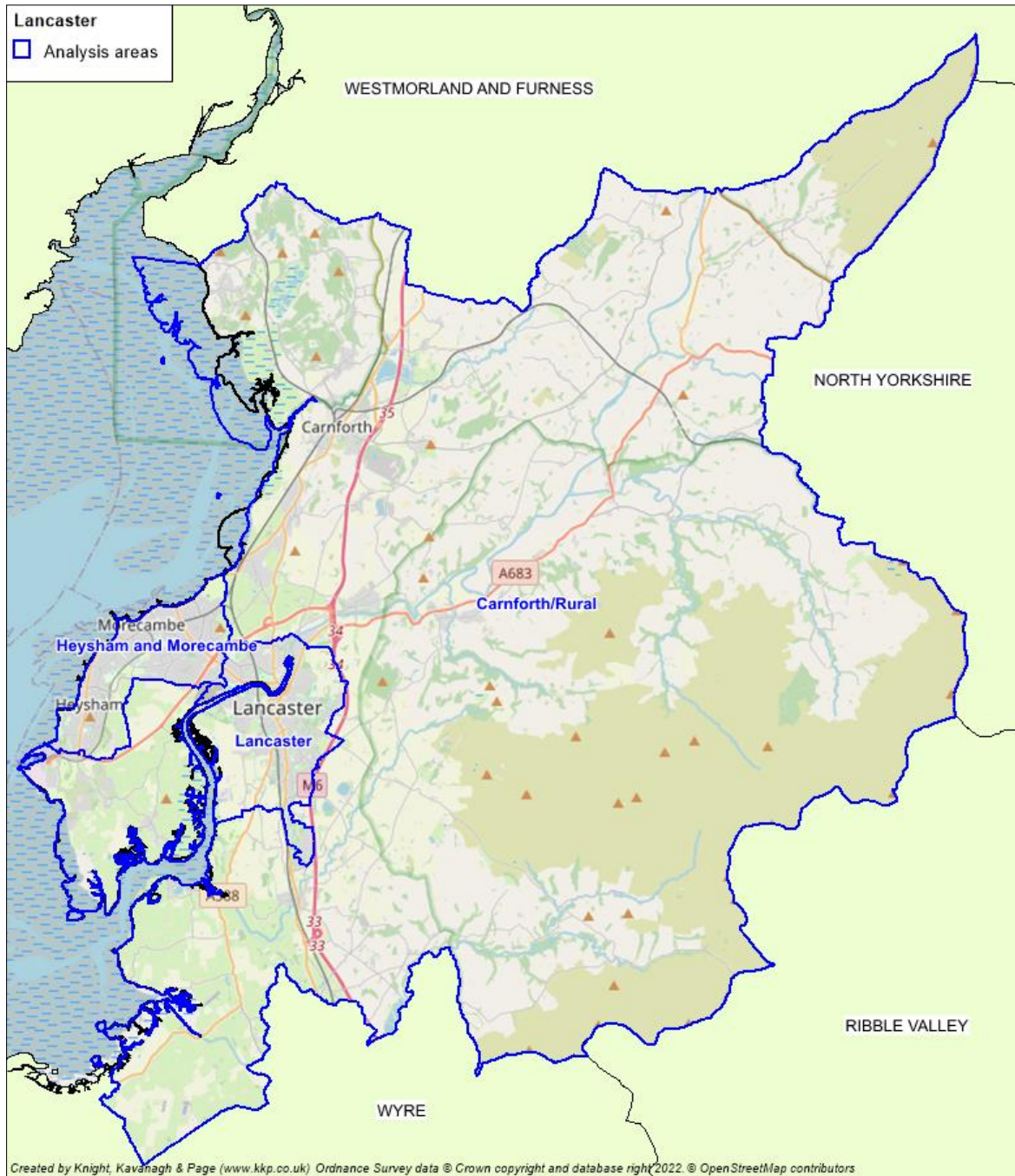
- ◀ Carnforth/ Rural
- ◀ Heysham and Morecambe
- ◀ Lancaster

It should be noted, for consistency, these are the same analysis areas as the previous study in 2018.

¹American football and lacrosse

LANCASTER PLAYING PITCH & OUTDOOR SPORTS STRATEGY STRATEGY & ACTION PLAN

Figure 1.1: Lancaster District study area with analysis areas



LANCASTER PLAYING PITCH & OUTDOOR SPORTS STRATEGY STRATEGY & ACTION PLAN

PART 2: VISION AND AIMS

A vision has been set out to provide a clear focus with desired outcomes for the Lancaster District PPOSS. It has been developed to relate to LCC corporate priorities and remains the same as the previous PPS:

'An accessible, high quality and sustainable network of sports pitches and other outdoor sports facilities that supports increasing the health and wellbeing of residents through increased sports participation by all residents, at all levels of play'.

To achieve this strategic vision, the strategy will seek to deliver the following objectives:

- ◀ Ensure that all valuable facilities are protected for the long-term benefit of sport.
- ◀ Promote a sustainable approach to the provision of playing pitches and management of sports clubs.
- ◀ Ensure that there are enough facilities in the right place to meet current and projected future demand.
- ◀ Ensure that all clubs have access to facilities of appropriate quality to meet current needs and longer-term aspirations.
- ◀ Ensure that, where possible, community use at education sites is obtained to benefit the wider population.

The following overarching aims are based on the three Sport England themes (see figure 2.1 below). It is recommended that they are adopted by LCC and its partners to enable it to achieve the overall vision of the PPOSS and Sport England planning objectives. Strategy delivery is the responsibility of, and relies upon, all relevant stakeholders.

AIM 1

To **protect** the existing supply of outdoor sport provision and ancillary facilities where it is needed for meeting current and future needs.

AIM 2

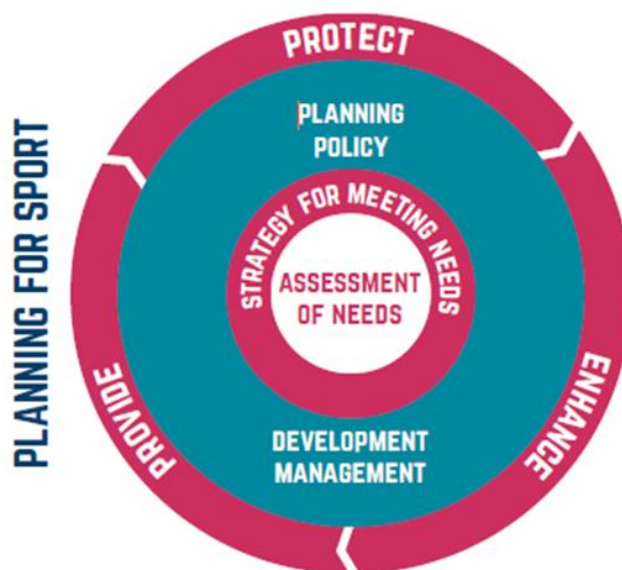
To **enhance** outdoor sport provision and ancillary facilities through improving quality and management of sites.

AIM 3

To **provide** new outdoor sport provision and ancillary facilities where there is current or future demand to do so.

LANCASTER PLAYING PITCH & OUTDOOR SPORTS STRATEGY STRATEGY & ACTION PLAN

Figure 2.1: Sport England themes



Source: Sport England, Planning for Sport Guidance (2019)

LANCASTER PLAYING PITCH & OUTDOOR SPORTS STRATEGY STRATEGY & ACTION PLAN

PART 3: HEADLINE FINDINGS

The table below highlights the quantitative headline findings identified for all main pitch sports included in the preceding Assessment Report. MES stands for match equivalent sessions and has been used as the comparable unit for natural grass pitches. Converting both the amount of play a site can accommodate (it's carrying capacity) and how much play takes place there (its current use) into the same unit of demand enables a comparison to be undertaken.

Pitches have a limit of how much play they can accommodate over a certain period of time before their quality, and in turn their use, is adversely affected. As the main usage of pitches is for matches, it is appropriate for the comparable unit to be match equivalent sessions.

Based on how they tend to be played, this unit for football and rugby union pitches relates to a typical week within the season for each sport. For cricket pitches it is appropriate to look at the number of match equivalent sessions over the course of a season. How much play a cricket pitch can accommodate is primarily determined by the number and quality of wickets on a pitch. Only one match is generally played per pitch per day. However, play is rotated across the wickets to reduce wear and allow for repair. Each wicket is able to accommodate a certain amount of play per season as opposed to a week.

The PPS guidance does not advocate the conversion of MES to pitches as there is not always a case for providing pitches to meet the demand/shortfalls expressed. For example, improving the quality of pitches can also increase the capacity of existing pitches to accommodate such demand. For qualitative findings and site-specific findings, please see Part 4: Sport Specific Recommendations and Scenarios, and Part 6: Action Plan.

For artificial surfaces, how much play can be accommodated is primarily determined by availability, rather than how much play it can accommodate before its quality is adversely affected as with natural grass pitches. Therefore, hours in the peak period is used as the comparable unit. For the other non-pitch sports (i.e., tennis, bowls etc) capacity is in accordance with Paragraph B13 of Sport England's ANOG guidance.

The table below shows the current supply and demand balance from the preceding Assessment Report. It also identifies the future supply and demand balance which takes into consideration future population growth. It should be noted that future demand is not in addition to the current balance, however, supersedes it.

For qualitative findings and site-specific findings, please see Part 4: Sport Specific Recommendations and Scenarios, and Part 6: Action Plan.

Table 3.1: Quantitative headline findings (pitch sports)

Sport	Area	Pitch type	Current capacity total in MES ^[1]	Future capacity total in MES (2031)
Football (grass)	District-wide	Adult	Spare capacity of 8	Spare capacity of 7.5
Football (grass)	District-wide	Youth 11v11	Shortfall of 5	Shortfall of 5.5
Football (grass)	District-wide	Youth 9v9	Spare capacity of 1.5	Spare capacity of 1
Football (grass)	District-wide	Mini 7v7	Spare capacity of 0.5	At capacity
Football (grass)	District-wide	Mini 5v5	Spare capacity of 1	Spare capacity of 0.5

^[1] MES – match equivalent sessions per week (per season for cricket)

LANCASTER PLAYING PITCH & OUTDOOR SPORTS STRATEGY STRATEGY & ACTION PLAN

Sport	Area	Pitch type	Current capacity total in MES ^[1]	Future capacity total in MES (2031)
Football (3G pitches)	District-wide	Full size, with sports lighting	Shortfall of 4	Shortfall of 4
Cricket	District-wide	Senior (Saturday)	Spare capacity of 9	Shortfall of 3
Cricket	District-wide	Senior (Sunday)	Spare capacity of 21	Spare capacity of 9
Cricket	District-wide	Junior (Midweek)	Spare capacity of 25	Spare capacity of 21
Rugby union	District-wide	Senior	Shortfall of 12.25	Shortfall of 12.25
Rugby league	District-wide	Senior	Shortfall of 4.5	Shortfall of 5 ²
Hockey (sand AGPs)	District-wide	Full size, with sports lighting	Sufficient supply but poor quality is a significant issue	Sufficient supply but poor quality is a significant issue

Table 3.2: Headline findings (remaining sports)

Sport	Headline findings
Tennis	For club-based tennis, there is considered to be sufficient provision to meet demand. For non-club courts, whilst no courts are identified as having any capacity issues, it cannot be said that supply is sufficient to meet demand due to the large amount of unmet and latent demand evidenced both nationally and in the Lancaster District.
Athletics	Supply is considered sufficient to meet demand, with only two track and field clubs currently based in the District.
Bowls	Five clubs are operating at or above recommended capacity levels and therefore need to be monitored to ensure that supply remains adequate. In general, future demand expressed can be accommodated on existing greens.
Cycling	It is considered that there is sufficient closed road cycling facilities in the District with the Salt Ayre Leisure Centre facility servicing multiple clubs in the Lancaster District.
Golf	With six golf facilities in the Lancaster District and a mix of 18-hole and 9-hole courses, supply is well placed to meet demand. Notwithstanding the above, there may be a gap in demand for a par three golf facility within the Lancaster District.
Other sports	Supply of facilities for lacrosse and American football can sufficiently cater for current levels of demand on either artificial or natural turf pitches.

Conclusions

From a quantitative position, the existing position for all sports is either that demand is being met or that there is a shortfall, whereas the future position shows the exacerbation of current shortfalls and the creation of additional shortfalls for some pitch/facility types and in some areas where demand is currently being met.

Where demand is being met, this does not equate to a surplus of provision, and indicates there is no manoeuvre to accommodate changes or unexpected growth. Where there is current spare capacity on grass pitches, this is either turned into a shortfall, lost or reduced when accounting for future demand.

² If future demand is realised and the Club were not to relocate from Vale of Lune RUFC the overplay on the current pitch would be five MES per week.

LANCASTER PLAYING PITCH & OUTDOOR SPORTS STRATEGY STRATEGY & ACTION PLAN

As such, there is a clear need to protect all existing playing pitch and outdoor sport provision until all demand is met, or provision is 'replaced by equivalent or better provision in terms of quantity and quality in a suitable location' and 'subject to equivalent or better accessibility and management arrangements' in line with National Planning Policy Framework (NPPF) paragraph 103 and Sport England's Playing Fields Policy.

In addition, there is also a need for improved quality, this could relate to pitches needing enhanced maintenance regimes, drainage systems installed or refurbishment of 3G pitches or sand-based AGPs.

There is also a significant shortfall of 3G pitches identified in the District to meet current and future demand for football training, based on the FA training model³. Further to this, an increase in 3G pitches could also help reduce grass pitch shortfalls by accommodating the transfer of match play, which in turn can aid pitch quality improvements by reducing demand for grass pitch provision.

³Shortfall calculated based on FA training model of one 3G pitch (11v11 size) accommodating 38 teams.
January 2024

LANCASTER PLAYING PITCH & OUTDOOR SPORTS STRATEGY STRATEGY & ACTION PLAN

PART 4: SPORT SPECIFIC ISSUES SCENARIOS AND RECOMMENDATIONS

In this section, in order to help develop recommendations and actions for each sport, and to understand their potential impact, a number of relevant scenario questions are tested against the key issues identified in the preceding Assessment Report for each sport. This then informs sport specific recommendations.

For site-specific and more localised recommendations, please refer to the Action Plan in Part 6 of the report.

4.1: Football – grass pitches

Assessment Report summary

Summary - football

- There are current shortfalls across youth 11v11 pitches. Whilst capacity is sufficient across adult, youth 9v9, mini 7v7 and mini 5v5 pitches.
- However, future growth could lead to mini 7v7 pitches being played to capacity. Adult, youth 9v9 and mini 5v5 pitches continue to be able to accommodate future demand sufficiently.

Supply

- The audit identifies a total of 87 grass football pitches within Lancaster District across 40 sites. Of these, 75 pitches across 34 sites are identified as being available for community use. All unavailable pitches are located at either education sites or elite sporting venues for Morecambe FC.
- Most available pitches in the District are in the Lancaster Analysis Area (33 pitches - 44% of available pitches), followed by the Carnforth/ Rural Analysis Area (28 pitches - 37% of available pitches), with the Heysham and Morecambe Analysis Area having the least number of pitches with 14 pitches (19% of available pitches).

Quality

- In total, 11 pitches (15%) are rated as good quality, 46 as standard quality (61%) and 18 as poor quality (24%).
- Of the 34 sites that are actively used for community football, six (18%) are serviced by good quality ancillary facilities, 19 (56%) by standard quality ancillary facilities and six (18%) are serviced by poor quality ancillary facilities. The remaining three sites (9%) are not serviced by onsite clubhouse/changing room provision.

Demand

- There are 205 teams identified as playing football in the District. This is made up of 42 adult men's, seven adult women's, 69 youth boys', 12 youth girls' and 76 mini soccer teams.
- It is important to note that proportionally Carnforth Analysis Area contains one of the fewest total pitches but has one of the highest number of teams playing in it.
- In Lancaster District 81% of all football teams play on grass pitches, with 19% of teams playing on 3G pitches.
- Future population growth totals five potential new teams, resulting in additional capacity requirement (in match equivalent sessions per week) of 0.5 on adult pitches, 0.5 on youth 11v11 pitches, 0.5 on youth 9v9 pitches, 0.5 on mini 7v7 pitches and 0.5 on mini 5v5 pitches.

Capacity

- There are 25 pitches identified as having actual spare capacity, totalling 19.5 match equivalent sessions per week.
- In total, 13 pitches across 12 sites are overplayed by a combined total of 13.5 match equivalent sessions per week. The most overplay is situated in the Carnforth/Rural Analysis Area (seven match equivalent sessions), followed by the Lancaster Analysis Area (3.5 match equivalent sessions).

LANCASTER PLAYING PITCH & OUTDOOR SPORTS STRATEGY STRATEGY & ACTION PLAN

Scenarios

Improving pitch quality / addressing overplay

In total, there are 13 pitches in the Lancaster District across 12 sites that are overplayed by a combined total of 13.5 match equivalent sessions per week. Improving quality of such provision will increase capacity across the sites and consequently reduce both current and future shortfalls across the Authority.

To illustrate the above, Table 4.1 highlights that the large majority of existing overplay would be alleviated if quality improved to good at each site. As a reminder, the capacity rating for each type and quality rating is:

Adult pitches		Youth pitches		Mini pitches	
Pitch quality	Matches per week	Pitch quality	Matches per week	Pitch quality	Matches per week
Good	3	Good	4	Good	6
Standard	2	Standard	2	Standard	4
Poor	1	Poor	1	Poor	2

Table 4.1: Overplay if all pitches were good quality (match equivalent sessions)

Site ID	Site name	Analysis area	Pitch type	No. of pitches	Current quality	Current capacity rating	Good quality capacity rating
6	Barrows Lane Football Pitch	Heysham and Morecambe	Youth 11v11	1	Poor	1	2
17	Carnforth High School	Carnforth/Rural	Adult	1	Standard	1	0
24	Cloughton Brickworks	Carnforth/Rural	Youth 11v11	1	Poor	1	2
27	Coronation Fields (Lancaster)	Lancaster	Adult	1	Standard	0.5	0.5
44	Iodine Park	Carnforth/Rural	Adult	1	Poor	1.5	0.5
46	King Georges Playing Field (Morecambe)	Heysham and Morecambe	Adult	1	Standard	0.5	0.5
50	Lancaster City Juniors FC	Lancaster	Youth 11v11	2	Poor	1	5
62	Low Road Playing Fields	Carnforth/Rural	Youth 11v11	1	Standard	3.5	1.5
78	Our Lady's Catholic College	Lancaster	Youth 11v11	1	Poor	0.5	2.5
87	Royal Albert Playing Field	Lancaster	Youth 11v11	1	Poor	1	3
108	The Trimpell Club	Heysham and Morecambe	Youth 11v11	1	Poor	1.5	1.5
112	University of Cumbria Sports Centre (Lancaster Campus)	Lancaster	Adult	1	Standard	0.5	0.5

LANCASTER PLAYING PITCH & OUTDOOR SPORTS STRATEGY STRATEGY & ACTION PLAN

As seen, most overplayed pitches could accommodate current demand if quality improved to good, and spare capacity would be created on 12 of the 13 pitches. This means that only one currently overplayed pitch would still display a shortfall even if quality is maximised. This pitch is located at Low Road Playing Fields, and it should be noted that it is overplayed due to be overmarked by a youth 9v9, mini 7v7 and mini 5v5 pitch.

As a result, the only way to fully alleviate overplay at this site would be to transfer demand off the site, to pitches with available capacity or to establish dedicated mini/youth pitches in order to reduce overmarking. With the latter being said, due to the size of the site it is unlikely that additional pitches could be established.

Reducing overplay through quality improvements would reduce the current shortfall across all pitch types with the current deficit on youth 11v11 pitches being fully alleviated.

Table 4.2: Impact on supply and demand if quality of overplayed pitches improved to good

Pitch/facility type	Current supply/ demand balance	Potential supply/ demand balance
Adult	Spare capacity of 8 MES per week	Spare capacity of 12 MES per week
Youth 11v11	Shortfall of 5 MES per week	Spare capacity of 3 MES per week
Youth 9v9	Spare capacity of 1.5 MES per week	Spare capacity of 1.5 MES per week
Mini 7v7	Spare capacity of 0.5 MES per week	Spare capacity of 0.5 MES per week
Mini 5v5	Spare capacity of 1 MES per week	Spare capacity of 1 MES per week

When considering future demand this would remain the same as referenced in the table below.

Table 4.3: Impact on future supply and demand if quality improved to good across the Lancaster District

Pitch/facility type	Future supply/ demand balance	Potential supply/ demand balance
Adult	Spare capacity of 7.5 MES per week	Spare capacity of 11.5 MES per week
Youth 11v11	Shortfall of 5.5 MES per week	Spare capacity of 2.5 MES per week
Youth 9v9	Spare capacity of 1 MES per week	Spare capacity of 1 MES per week
Mini 7v7	At capacity	At capacity
Mini 5v5	Spare capacity of 0.5 MES per week	Spare capacity of 0.5 MES per week

Although shortfalls could be alleviated across the Lancaster District if all overplayed pitches were improved to good quality, this does not address the overplay at Low Road Playing Field which is further explored below.

Carnforth/Rural Analysis Area

The Carnforth/Rural Analysis Area has a vast rural area and in fact a large amount of the demand within the analysis area is from within and around Carnforth settlement area.

At present there are several overplayed pitches within the Carnforth/Rural Analysis Area, however, as shown above, most of these will be alleviated with quality improvements. However, even after quality improvements are made to pitches across the Carnforth/Rural Analysis Area overplay will remain at Low Road Playing Fields predominately due to pitch overmarking. Although pitch enhancements should still be sought, 1.5 match equivalent sessions per week of overplay would remain.

LANCASTER PLAYING PITCH & OUTDOOR SPORTS STRATEGY STRATEGY & ACTION PLAN

At Low Road Playing Fields, it has also been identified that the older teams currently using the site (11 years +) will be relocating off the site as Halton Juniors has acquired alternative provision at Arkholme Village Hall. Therefore, as there will no longer be a need for youth 11v11 pitches onsite, it is recommended that the site is reconfigured to meet the mini football demand with no overmarking. With two standard quality dedicated mini pitches marked out, this will provide a total capacity of eight match equivalent sessions per week at the site and will more than address any overplay.

Further to the above, it should be noted that due to the high demand specifically within Carnforth, several pitches and sites are heavily utilised, which is detrimental to the quality of pitches. In general, there is not considered enough good quality provision within Carnforth itself so opportunities for new provision should be explored.

Pitch reconfiguration

Below is a summary of the current supply and demand for both adult and youth 11v11 pitch types across the Lancaster District from the preceding Assessment Report.

Table 4.5: Supply and demand position for adult pitches in match equivalent sessions

Analysis area	Actual spare capacity	Overplay	Current total	Future demand	Future total
Carnforth/ Rural	6	2.5	3.5	-	3.5
Heysham and Morecambe	1	0.5	0.5	-	0.5
Lancaster	5	1	4	0.5	3.5
Lancaster District	12	4	8	0.5	7.5

As seen, there is actual spare capacity across a number of adult pitches particularly within the Carnforth/Rural and Lancaster analysis areas amounting to 3.5 and four match equivalent sessions per week, respectively. In comparison in the same analysis areas there are identified shortfalls of youth 11v11 pitch types amount two and one match equivalent sessions per week.

Table 4.6: Supply and demand position for youth 11v11 pitches in match equivalent sessions

Analysis area	Actual spare capacity	Overplay	Current total	Future demand	Future total
Carnforth/ Rural	2.5	4.5	2	-	2
Heysham and Morecambe	0.5	2.5	2	0.5	2.5
Lancaster	1.5	2.5	1	-	1
Lancaster District	4.5	9.5	5	0.5	5.5

A potential option to alleviate the shortfalls on youth 11v11 pitches could be reconfiguring adult pitches to the youth format. This would be dependent on the location of specific sites within each analysis area; however, it could provide an alternative approach to alleviate shortfalls in comparison to pitch improvements alone.

Below is a summary of supply and demand for both adult and youth 11v11 pitch types if some sites are reconfigured pitches to alleviate shortfalls within the Carnforth/Rural and Lancaster analysis areas.

LANCASTER PLAYING PITCH & OUTDOOR SPORTS STRATEGY STRATEGY & ACTION PLAN

Table 4.7: Potential supply and demand position for adult pitches in match equivalent sessions

Analysis area	Actual spare capacity	Overplay	Current total	Future demand	Future total
Carnforth/ Rural	3.5	2.5	1	-	1
Heysham and Morecambe	1	0.5	0.5	-	0.5
Lancaster	3	1	2	0.5	1.5
Lancaster District	7.5	4	3.5	0.5	3

If 2.5 match equivalent sessions of spare capacity in the Carnforth/Rural Analysis Area and two match equivalent sessions of the spare capacity in the Lancaster Analysis Area on adult pitches could be reconfigured to youth 11v11 it would fully alleviate the shortfall in these areas, as seen in the table below.

Table 4.8: Potential supply and demand position for youth 11v11 pitches in match equivalent sessions

Analysis area	Actual spare capacity	Overplay	Current total	Future demand	Future total
Carnforth/ Rural	5	4.5	0.5	-	0.5
Heysham and Morecambe	0.5	2.5	2	0.5	2.5
Lancaster	3.5	2.5	1	-	1
Lancaster District	9	9.5	0.5	0.5	1

It should be noted that the above scenario is hypothetical as further analysis would be required to understand if there is a need to relocate any adult teams that maybe using the pitches with spare capacity at peak time. If this is the case, they would need to be relocated to accommodate youth 11v11 football. At present, there is only one adult pitch within the District at Arkholme Village Hall (Carnforth/Rural) that does not accommodate any adult teams and therefore is a possibly well suited pitch to be reconfigured. All other adult pitches with actual spare capacity currently accommodate adult teams and therefore relocation would be required before any pitches could be reconfigured.

As a result, pitch reconfiguration should be examined as a potential solution to alleviate partial shortfalls with the primary focus being on pitch enhancements.

Impact of participation increases

Of responding clubs, seven report aspirations to increase the number of teams they provide, totalling a predicted growth of 18 teams, as seen below.

Table 4.9: Potential team increases identified by clubs

Club	Analysis area	Gender	No. of teams	Pitch size	Match equivalent sessions ⁴
Bowerham Juniors FC	Lancaster	Mixed	1	Mini (7v7)	0.5
Bowerham Juniors FC	Lancaster	Mixed	1	Mini (5v5)	0.5
Galgate FC	Carnforth/ Rural	Women's	1	Adult	0.5

⁴ Two teams require one pitch to account for playing on a home and away basis; therefore, 0.5 pitches can therefore be seen in the table where there is latent demand for one team.

LANCASTER PLAYING PITCH & OUTDOOR SPORTS STRATEGY STRATEGY & ACTION PLAN

Club	Analysis area	Gender	No. of teams	Pitch size	Match equivalent sessions ⁴
Galgate FC	Carnforth/ Rural	Boys	1	Youth (11v11)	0.5
Galgate FC	Carnforth/ Rural	Boys	1	Youth (9v9)	0.5
Galgate FC	Carnforth/ Rural	Girls	1	Youth (9v9)	0.5
Galgate FC	Carnforth/ Rural	Mixed	1	Mini (7v7)	0.5
Galgate FC	Carnforth/ Rural	Mixed	1	Mini (5v5)	0.5
Middleton & Overton Sports FC	Carnforth/ Rural	Girls	1	Youth (9v9)	0.5
Morecambe Hawk YFC	Heysham and Morecambe	Boys	1	Youth (11v11)	0.5
Slyne with Hest FC	Carnforth/ Rural	Mens	1	Adult	0.5
Slyne with Hest FC	Carnforth/ Rural	Boys	1	Youth (11v11)	0.5
Storeys of Lancaster FC	Lancaster	Mens	1	Adult	0.5
Storeys of Lancaster FC	Lancaster	Boys	1	Youth (11v11)	0.5
Storeys of Lancaster FC	Lancaster	Mixed	1	Mini (5v5)	0.5
Westgate Wanderers FC	Heysham and Morecambe	Mens	1	Adult	0.5
Westgate Wanderers FC	Heysham and Morecambe	Mixed	1	Mini (7v7)	0.5
Westgate Wanderers FC	Heysham and Morecambe	Mixed	1	Mini (5v5)	0.5
-	-	Totals	18	-	9

The following scenario shows the impact that these team increases would have on the supply and demand balance of football pitches in the Lancaster District.

Table 4.10: Impact on current supply and demand from potential participation increases

Pitch/facility type	Current supply/ demand balance	Potential supply/ demand balance
Adult	Spare capacity of 8 MES per week	Spare capacity of 6 MES per week
Youth 11v11	Shortfall of 5 MES per week	Shortfall of 7 MES per week
Youth 9v9	Spare capacity of 1.5 MES per week	At capacity
Mini 7v7	Spare capacity of 0.5 MES per week	Shortfall of 1 MES per week
Mini 5v5	Spare capacity of 1 MES per week	Shortfall of 1 MES per week

As seen in the table above, if these aspirations are realised, shortfalls would be exacerbated across all pitch types apart from adult. After considering future demand, shortfalls across all pitch types would be exacerbated, again apart from adult.

Table 4.11: Impact on future supply and demand from potential participation increases

Pitch/facility type	Future supply/ demand balance	Potential supply/ demand balance
Adult	Spare capacity of 7.5 MES per week	Spare capacity of 5.5 MES per week
Youth 11v11	Shortfall of 5.5 MES per week	Shortfall of 7.5 MES per week
Youth 9v9	Spare capacity of 1 MES per week	Shortfall of 0.5 MES per week
Mini 7v7	At capacity	Shortfall of 1.5 MES per week
Mini 5v5	Spare capacity of 0.5 MES per week	Shortfall of 1.5 MES per week

LANCASTER PLAYING PITCH & OUTDOOR SPORTS STRATEGY STRATEGY & ACTION PLAN

Where shortfalls do remain or develop, this could be alleviated through pitch re-configuration, utilising the spare capacity that has been created. Alternatively, increased usage of existing or new 3G pitches could be sought to enable the transfer of match play demand away from grass pitches. As such, this would result in there being no requirement for new pitches to be established (other than those that may be needed to, for example, support housing growth).

Loss of access to unsecure education sites

There is current unsecured community use of grass football pitches at five education sites across the District (Carnforth High School, Lancaster University Sports Centre, Our Lady's Catholic College, Overton St Helens C of E Primary School and University of Cumbria Sports Centre Lancaster Campus), totalling 19.5 match equivalent sessions per week, across adult (8.5 MES), youth 11v11 (seven MES), youth 9v9 (three MES) and mini 7v7 (one MES) pitches.

As seen in the table below, if community use is lost at these sites (because they are unsecure), shortfalls would be exacerbated across all pitch types apart from adult.

Table 4.12: Impact on current supply and demand from potential loss of unsecure sites

Pitch/facility type	Current supply/ demand balance	Potential supply/ demand balance
Adult	Spare capacity of 8 MES per week	Shortfall of 0.5 MES per week
Youth 11v11	Shortfall of 5 MES per week	Shortfall of 12 MES per week
Youth 9v9	Spare capacity of 1.5 MES per week	Shortfall of 1.5 MES per week
Mini 7v7	Spare capacity of 0.5 MES per week	Shortfall of 0.5 MES per week
Mini 5v5	Spare capacity of 1 MES per week	Spare capacity of 1 MES per week

After considering future demand, shortfalls across all pitch types would be exacerbated, again apart from adult as shown in the table below.

Table 4.13: Impact on future supply and demand from potential loss of unsecure sites

Pitch/facility type	Future supply/ demand balance	Potential supply/ demand balance
Adult	Spare capacity of 7.5 MES per week	Shortfall of 1 MES per week
Youth 11v11	Shortfall of 5.5 MES per week	Shortfall of 12.5 MES per week
Youth 9v9	Spare capacity of 1 MES per week	Shortfall of 2 MES per week
Mini 7v7	At capacity	Shortfall of 1 MES per week
Mini 5v5	Spare capacity of 0.5 MES per week	Spare capacity of 0.5 MES per week

In summary, there is insufficient spare capacity on grass football pitches (with secure tenure for community users) at a Districtwide level to meet this demand for adult, youth 11v11, youth 9v9 and mini 7v7 of football at present, should access to these education sites be lost. Shortfalls would be created at adult, youth 9v9 and mini 7v7 whilst current shortfalls at youth 11v11 being further exacerbated. It would also create new current shortfalls in the Carnforth/Rural Analysis Area on youth 9v9 and mini 7v7 pitches. Whilst, the Lancaster Analysis Area would have a new shortfall created on adult pitches.

Recommendations

- ◀ Protect existing quantity of grass football pitches, particularly within the Carnforth/Rural analysis area.
- ◀ Where pitches are overplayed and/or assessed as poor or standard quality, prioritise investment to improve quality.

LANCASTER PLAYING PITCH & OUTDOOR SPORTS STRATEGY STRATEGY & ACTION PLAN

- ◀ Explore the potential of reconfiguring specific adult pitches to youth 11v11 in order to alleviate identified shortfalls.
- ◀ Seek to secure community use at education sites which already have community use, but use is unsecure.
- ◀ Transfer match play from sites which remain overplayed to alternative sites with spare capacity (or 3G pitches in the future), in particular at Low Road Playing Fields (and reconfigure to meet mini demand).
- ◀ Identify and develop a new playing field site in Carnforth as a long-term multi-pitch home for Carnforth Rangers FC, as additional capacity is required to help meet current demand and future growth.
- ◀ Update the LFFP with findings from the PPOSS.
- ◀ Utilise the Football Foundation's PitchPower app to assist in the improvement and ongoing maintenance of provision.
- ◀ Support clubs to access Football Foundation funding to improve grass pitches where presently maintaining them and to take on greater maintenance (and management) of the pitch stock where possible.
- ◀ Support the growth of women and girl's football and ensure future demand can be adequately accommodated.
- ◀ Seek to gain access to sites not currently available for community use such as schools, particularly where multiple pitches are provided to reduce current and future shortfalls.
- ◀ Improve ancillary facilities where there is a demand to do so and where it can benefit the wider footballing offer, focusing on multi-pitch sites and key sites for adult and female participation.

4.2: Third generation turf (3G) pitches

Assessment Report summary

Summary – 3G pitches

- ◀ **In conclusion, there is deemed to be an insufficient supply to accommodate both current and future demand for 3G pitches in Lancaster District.**
- ◀ **Additional 11v11 3G pitch provision for football is required in the Carnforth/Rural and Lancaster sub-areas.**

Supply

- ◀ There are six 3G pitches of 11v11 size in Lancaster District. Five of these pitches are located in the Heysham and Morecambe Analysis Area.
- ◀ All pitches have sports lighting, with three of the six pitches being available for community use.
- ◀ There is also one smaller size 3G pitch servicing Lancaster District, however, the pitch is unavailable for community use.
- ◀ In the Lancaster District four of the pitches are FA/FIFA compliant and on the FA 3G Pitch Register so permitted for match play use. Whilst the certificate for the pitch at Morecambe Bay Academy expired in 2019.
- ◀ There is one WR compliant 3G pitches in the Lancaster District. The 3G pitch at Lancaster and Morecambe College has a shock pad and was previously compliant, however, the pitch hasn't been retested since 2018.
- ◀ The 3G pitch at Heysham Mossgate Community and Sports Centre is managed by a community organisation. Whilst the 3G pitch at Morecambe FC (Mazuma Stadium) is owned and managed by a private owner. All other pitches are located at educational sites and are managed by the respective educational organisations.

Quality

- ◀ Of the six pitches of 11v11 size, five (83%) are standard quality and one (17%) pitch at Morecambe FC Mazuma Stadium) is poor quality.
- ◀ The one small sided 3G pitch at Morecambe FC (Mazuma Stadium) is of poor quality.
- ◀ The ancillary facilities at Heysham Mossgate Community & Sports Centre and Lancaster University Sports Centre are rated as good quality with no issues arising during consultation.

LANCASTER PLAYING PITCH & OUTDOOR SPORTS STRATEGY STRATEGY & ACTION PLAN

Demand

- All pitches are extensively used for affiliated football demand both for midweek training and competitive demand at the weekend.

Capacity

- The 11v11 3G pitches currently available for community use in the Lancaster District are all operating at, or close to, capacity at peak times (where known), especially during winter months when grass pitches cannot be used for training or recreational demand (due to a lack of sports lighting).
- In the Lancaster District 67% clubs that responded to consultation report that they require additional access to 3G provision, however, the exact number of teams that don't already access 3G pitches is unquantifiable.

Scenarios

Accommodating football training demand

Based on 205 teams currently playing on football pitches in the Lancaster District (on the FA's model of one 11v11 pitch being able to cater for 38 teams), there is a theoretical need for five full size 3G pitches (rounded down from 5.39). With there currently being three community available 11v11 3G pitches, there is an insufficient number of pitches within Lancaster District, with a shortfall of two pitches.

Table 4.12: Current demand for 3G pitches in Lancaster District (based on 38 teams per pitch)

Current number of teams	3G pitch requirement	Current number of 3G pitches available	Current shortfall
205	5	3	2

When considering future demand for an additional five teams (based on growth identified in Part 2 of this report), the required number of 3G pitches increases to six, therefore there is an increased shortfall to three 11v11 3G pitch.

Table 4.13: Future demand for 3G pitches in the Lancaster District (based on 38 teams per pitch)

Future number of teams	3G requirement	Current number of 3G pitches available	Future shortfall
210	6	3	3

Alternatively, the table below considers the number of 3G pitches required if every team was to remain training within the respective analysis area that they play in. This not only identifies where the potential needs exist across Lancaster District, but it can also be used to guide which areas should be targeted for new provision.

Table 4.14: Current demand for 3G pitches by analysis area (based on 38 teams per pitch)

Analysis area	Current number of teams	3G pitch requirement ⁵	Current number of 3G pitches	Potential shortfall
Carnforth/Rural	75	2 (1.97)	-	2
Heysham and Morecambe	65	2 (1.71)	3	-

⁵ Rounded to the nearest 0.25.

LANCASTER PLAYING PITCH & OUTDOOR SPORTS STRATEGY STRATEGY & ACTION PLAN

Analysis area	Current number of teams	3G pitch requirement ⁵	Current number of 3G pitches	Potential shortfall
Lancaster	65	2 (1.71)	-	2
Lancaster District	205	6	3	4

This shows that there is currently a shortfall of four 11v11 3G pitches in Lancaster District. When broken down by analysis area, there is a shortfall identified in the Carnforth/ Rural and Lancaster analysis areas both of two 11v11 pitches.

Providing new 3G pitches

The recommended dimensions for a full size 3G artificial grass pitch for football are 100 x 64 metres. This extends to an area of 106 x 70 metres with the recommended minimum three metre run off area included. These dimensions allow for all age group match play to take place including adults, youth under 17/18 and younger age groups via overmarked pitches, e.g., the marking out of two 9v9 pitches for under 11/12s.

Please note that proposals in this PPOSS for any new 3G artificial grass pitches are based on providing them to the recommended dimensions. If a new pitch is proposed to measure below the recommended dimensions, then justification must be provided for this so that the impact of a reduced pitch size can be considered in relation to meeting current and future needs.

It should also be noted that moving forward all pitches funded by the FF will have a shock pad installed, this does not mean that all pitches will be WR or RFL compliant however, it allows a path to collaboration between NGBs to ensure all new build pitches have the potential to meet requirements for contact rugby training.

Although there are no immediate plans on how the remaining shortfalls of 3G provision (one each in the Carnforth/Rural and Lancaster analysis areas) could be alleviated, initial discussions with relevant stakeholders indicate a potential to convert the hockey suitable AGP at Central Lancaster High School to a 3G surface. However, due to qualitative issues with AGPs this should not be pursued as an option until demand is met on other hockey pitches in the District. If the Central Lancaster High School AGP was to be converted there would be a suitable level of 3G provision in the Lancaster Analysis Area to meet demand.

In comparison, beyond Carnforth High School another potential project has not yet been identified in the Carnforth/Rural Analysis Area to address the remaining shortfall of 3G provision. A more detailed analysis of teams, travel times and potential sites is required to determine how best to meet the need for additional 3G provision to service the collective demand spanning the spread rural settlements particularly.

Hockey suitable AGPs

There is a need to retain at least three hockey suitable AGPs in the Authority to service the current and future demand for community hockey demand. However, please note this is from a quantity perspective only and does not take into account accessibility and quality issues identified across the Lancaster District.

If quality and accessibility issues can be resolved for the provision at Lancaster University Sports Centre and University of Cumbria Sports Centre (Lancaster Campus) this would be a suitable level of provision to meet demand from Lancaster HC, Lancaster & Morecambe HC, Lancaster Nomads HC and Lancaster University HC.

LANCASTER PLAYING PITCH & OUTDOOR SPORTS STRATEGY STRATEGY & ACTION PLAN

Therefore, the remaining community available provision at Central Lancaster High School, which is not used for community club hockey could, in the future, be considered for conversion to a 3G surface. This would not impact on the ability to cater for current and future demand for community hockey.

Conversion of sand based AGPs to 3G should not take place unless consultation with England Hockey identifies the AGP is not required to meet existing or future predicted demand.

World Rugby (WR) and RFL compliant 3G pitches

There is currently one WR compliant 3G pitch within the District at Lancaster University Sports Centre. The 3G pitch at Lancaster and Morecambe College has a shock pad, and was previously WR compliant, however, it has not been retested since 2018, and subsequently has not had much if any community use for rugby or football in recent years. Although there are no dedicated RFL compliant 3G pitches in the District, the aforementioned pitches, would meet the relevant requirements for RFL demand, however, needs relevant testing.

It should also be noted that both pitches have limited community access with the former primarily being used for university demand and the latter used solely by Morecambe FC senior and junior teams.

Currently there is minimal rugby union demand taking place on the 3G pitch at Lancaster University Sports Centre from the University intermural teams.

Heysham Atoms ARLFC is in the process of relocating to King Georges Playing Field (Morecambe) which is adjacent to Bay Leadership Academy. On this basis, options should be explored when resurfacing the full size 3G pitch at the Academy to make it WR/RFL compliant in order to accommodate rugby demand. In addition, this could also support training demand requirements for Vale of Lune RUFC. This is due to the fact that neither club has regular guaranteed access to such provision. Further dialogue needs to take place between the relevant stakeholders to understand if this is feasible and to understand potential usage between community users (football, rugby league and rugby union).

It is evident that there is a requirement to gain access and to provide a WR and RFL compliant surface for both established rugby clubs in the District. Therefore, it is recommended that one of the following options is developed:

- ◀ An existing 3G pitch which currently meets requirements for compliancy but either requires retesting and making accessible (i.e. Lancaster and Morecambe College) or greater use establishing (i.e. Lancaster University Sports Centre).
- ◀ An existing 3G pitch which does not currently meet the requirements for compliancy is developed to meet WR/RFL compliancy (i.e. Bay Leadership Academy).
- ◀ A new 3G pitch development is built to the specification for WR/RFL compliancy.

Recommendations

- ◀ Protect current stock of 3G pitches.
- ◀ Refurbish relevant 3G pitches where necessary.
- ◀ Develop new 3G pitch provision with sports lighting to alleviate overplay in the Carnforth/Rural and Lancaster analysis areas.
- ◀ Ensure England Hockey is in agreement regarding any proposals for conversion to 3G of existing hockey AGPs, to ensure the sustainability and sufficient supply of existing AGPs for hockey.

LANCASTER PLAYING PITCH & OUTDOOR SPORTS STRATEGY STRATEGY & ACTION PLAN

- ◀ Ensure that new 3G pitches are constructed to meet quality performance standards to meet performance testing criteria for their respective sporting uses, dependent on need and aspirations based on discussions with relevant NGBs.
- ◀ Ensure that all existing and new pitches that are on the FA register are re-tested every three years (or annually if used for National League System play) to sustain certification.
- ◀ Ensure that any new 3G pitches have community use agreements in place and seek to use this to also tie in access to grass pitch and other sporting provision, where relevant.
- ◀ Encourage providers to put in place a sinking fund or other mechanism for long-term sustainability to fund any future repairs and eventual surface replacement at end of life.
- ◀ Ensure new and existing 3G pitches have LED sports lighting in order to reduce light spill and improve energy efficiency.
- ◀ Encourage more match play demand to transfer to 3G pitches, where possible, particularly from for mini football.
- ◀ Explore the feasibility to make any new or existing 3G provision WR/RFL compliant, including the retesting and recertification of pitches which have previously met the requirements.

4.3: Cricket squares

Assessment Report summary

Cricket summary

- ◀ **Overall, there is currently sufficient capacity of natural turf cricket squares to meet current demand for club cricket across the District. However, when future demand from population is applied future demand cannot be met for Saturday cricket, with a shortfall of three match equivalent sessions per season becoming evident.**

Cricket – supply

- ◀ There are 16 grass wicket squares in the Lancaster District located across 14 sites, of which, 12 are available for community use.
- ◀ In the Lancaster District, there are eight NTPs which accompany grass wicket squares, as well as two standalone NTPs.
- ◀ Tenure of sites in Lancaster District is generally secure i.e., through freehold, a long-term lease or a guarantee that pitches will continue to be provided over the next three years.
- ◀ Westgate CC and Bare CC are the only clubs that are considered to have unsecure tenure, this is due to having yearly rolling renting arrangements with private owners on their home sites. However, Westgate and Bare cricket clubs have recently been in contact with the land owner and are in discussions at securing a longer term agreement to secure their tenure.
- ◀ Of the 12 squares available for community use, five grass squares are rated as good quality (42%), seven rated as standard quality (58%). No squares are rated as poor quality.
- ◀ The audit of ancillary facilities at available grass pitch cricket sites determines that five squares (42%) are accompanied by good quality provision, and six squares (50%) are accompanied by standard quality provision. Only one square at Bare Cricket Club is accompanied by poor quality ancillary provision.
- ◀ Of the 12 club/community available sites three (Bare Cricket Club, Galgate Recreation Ground and Heysham Cricket Club) do not have dedicated fixed net provision.

Cricket – demand

- ◀ There are 12 cricket clubs competing in the Lancaster District generating 81 teams. As a breakdown, this equates to 34 senior men's, seven senior women's and 36 junior boys' and four junior girls' teams.
- ◀ The largest club playing in the District is Carnforth CC which has a total of 14 teams.
- ◀ Most teams play in the Lancaster Analysis Area which accommodates 37 teams (46%), followed by the Heysham and Morecambe Analysis Area with 21 teams (26%), and the Carnforth/Rural Analysis Area also accommodating 23 (29%) teams.
- ◀ There is no known imported or exported demand from the Lancaster District.
- ◀ It is expected that one additional men's team and one additional junior boys' team are to be generated by population growth.

LANCASTER PLAYING PITCH & OUTDOOR SPORTS STRATEGY STRATEGY & ACTION PLAN

- Of the responding clubs, three indicate aspirations to increase levels of participation through the creation of new teams. This equates to a total aspirational growth of 11 teams, equating to one senior men's, two senior women's and eight junior teams as seen below.

Cricket – capacity

- Bolton-Le-Sands Cricket Club, Galgate Recreation Field, The Trimpell Club, Warton Cricket Club all have spare capacity and availability to accommodate additional senior cricket on Saturdays, Sundays and Midweek (Junior) cricket.
- There are five sites in Lancaster District which are considered to be overplayed for cricket by a total of 39 match equivalent sessions per season.

Scenarios

Accommodating overplay

There are five cricket sites in Lancaster District which are overplayed by a total of 39 match equivalent sessions per season.

Table 4.16: Summary of overplay

Site ID	Site name	Analysis area	Square quality	Number of squares	Overplay (matches per season)
16	Carnforth Cricket Club	Carnforth/Rural	Good	1	19
36	Heysham Cricket Club	Heysham and Morecambe	Standard	1	5
51	Lancaster Cricket & Sports Club	Lancaster	Standard	1	6
70	Morecambe Cricket Club	Heysham and Morecambe	Good	1	5
110	Torrisholme Cricket Club	Lancaster	Standard	1	4
-	-	-	Total	5	39

The relatively low level of overplay on the squares at Heysham Cricket Club, Lancaster Cricket & Sports Club and Torrisholme Cricket Club can be overcome through qualitative improvements to the squares (standard to good quality).

Comparatively, as the square at Morecambe Cricket Club is already good quality, overplay cannot be alleviated through enhancements. With this being said, the deficit on the site is considered minimal and therefore manageable, however, any further growth could increase overplay.

Carnforth Cricket Club accommodates the most overplay (19 matches per season) with this unable to be reduced through quality enhancements due to the square already being good quality.

In order to alleviate overplay on the site, greater utilisation of the NTP should be explored. As a caveat, whilst the inclusion of NTPs for the management of fixtures would alleviate overplay issues, usage is subject to league rules and minimum pitch specifications. Furthermore, this should not lead to undue pressure being placed on clubs and volunteers using the sites to install self-funded NTPs.

Although not readily available within grassroots cricket, there may be potential in the future to address overplay through the installation of hybrid wicket/s on competitive senior squares. The ECB has been working with SIS Pitches on the installation of hybrid cricket wickets at county cricket clubs (2019) and more recently recreational squares such as Perry Hall Park in Birmingham (2021).

LANCASTER PLAYING PITCH & OUTDOOR SPORTS STRATEGY STRATEGY & ACTION PLAN

Ideally, once these become more readily available for community cricket clubs and have gone through the required testing, they could act as a way to increase levels of playing capacity on overplay squares. This would be particularly beneficial for those sites which are limited on space and cannot create additional wickets due to restrictions things such as boundary length or ball strike.

Although it is difficult at this stage to understand what impact hybrid wickets could have on each site's capacity, it is suggested that it could potentially alleviate all the overplay on both junior and senior wickets. This is based on the assumption that more senior demand can take place on the hybrid wickets allowing for the outer senior wickets to be used/converted for junior demand.

Security of tenure

Across the District most cricket clubs have security of tenure at their home venue. The only clubs which do not have security are Westgate CC and Bare CC which each have rolling yearly agreements with private landowners. Both clubs have been in contact with their landowners are in discussions to secure tenure through long term agreements. This should be prioritised as there is insufficient provision within the Lancaster Analysis Area to accommodate the clubs demand should they be displaced.

Future demand – club aspirations

Below is a summary from the preceding Assessment Report of club aspirations for future demand.

Table 4.17: Future demand aspirations expressed by club

Club	Analysis area	Senior men	Senior women	Junior
Lancaster CC	Lancaster	-	1	2
Silverdale CC	Carnforth/ Rural	-	-	2
Warton CC	Carnforth/ Rural	1	1	4
-	Total	1	2	8

Based on levels of supply and demand at each of the sites, Warton CC could accommodate its aspirations at Warton Cricket Club as there is spare capacity on Saturdays, Sundays and Midweek. Comparatively Silverdale CC cannot currently accommodate its future demand, however, if the quality of its square improved from standard to good quality it could accommodate two more junior teams.

Lancaster CC is the only club that cannot realistically accommodate any future demand on its site as it has no additional capacity. Furthermore, there is no capacity in the Lancaster Analysis Area for more teams. If the Club wanted to actualise this ambition it would need to find a site in the Carnforth/Rural Analysis Area with spare capacity on Sundays/Midweek such as Bolton-Le-Sands Cricket Club, Galgate Recreation Field or The Trimpell Club.

Recommendations

- ◀ Protect existing quantity of cricket squares.
- ◀ Improve quality at sites assessed as standard and poor and ensure quality is sustained at sites assessed as good.
- ◀ Assist Westgate CC and Bare CC in securing long term tenure at their home sites.
- ◀ Explore greater utilisation of onsite NTP at Carnforth Cricket Club to further alleviate overplay and the potential of hybrid wickets.

LANCASTER PLAYING PITCH & OUTDOOR SPORTS STRATEGY STRATEGY & ACTION PLAN

- ◀ Enhance ancillary provision where required in accordance with NPPF and Sport England's Playing Fields Policy.
- ◀ Continue to support ECB initiatives such as All Stars and Dynamos and ensure unaffiliated demand and recreational cricket is provided for.
- ◀ Ensure that any developments nearby to existing or new cricket sites do not prejudice the use of the provision (e.g. through ball-strike issues).

4.4: Rugby union - grass pitches

Assessment Report summary

Summary – Rugby union

- ◀ **There is an insufficient supply of provision in the Lancaster District to accommodate for both current and anticipated future levels of demand for rugby union.**
- ◀ **The priority for rugby union in the Lancaster District is to ensure maintenance programmes are enhanced across club settings to improve quality of pitches to alleviate the overplay across senior pitches.**

Supply

- ◀ There is a total of 13 rugby union pitches identified in the Lancaster District. Of these, seven are available for community use. All pitches are senior size pitches, and all unavailable pitches are located at education sites.
- ◀ There is one WR compliant 3G pitch within the Lancaster District. The pitch is located at Lancaster University Sports Centre and is used actively by the university rugby union teams. Whilst the pitch at Lancaster and Morecambe College has a shock pad and was previously WR compliant it hasn't been retested since 2018 meaning its certification has lapsed.
- ◀ All sites used by rugby union clubs in the District are managed by the respective rugby union clubs. Vale of Lune RUFC has freehold ownership of its site.

Quality

- ◀ Of the seven community available rugby union pitches three (43%) are good quality, one (14%) is standard quality and three are poor quality pitches (43%). Of these, all poor quality community available pitches are located at Vale of Lune Rugby Union Football Club sites which through consultation were identified as receiving basic maintenance.
- ◀ All available pitches are reported to have adequate natural drainage, with no issues with general drainage of pitches.

Demand

- ◀ There is one rugby union club in the Lancaster District which in total generates demand equating to 19 teams. The breakdown by type is shown in the table below.
- ◀ Community club training typically takes place on grass pitch provision with sports lighting.
- ◀ Future demand from population increases is projected as zero teams. Whilst future demand from club growth aspirations is considered to amount to two teams (one colt girls' and one colt boys' team), requiring additional match play capacity of one match equivalent sessions on senior pitches.

Capacity

- ◀ This is due to actual spare capacity being located on educational sites which are unavailable for community use or offer unsecure tenure, whilst the spare capacity at Vale of Lune Rugby Union Football Club is discounted to protect the 1st XV pitch.
- ◀ There is one overplayed pitch at Vale of Lune Rugby Union Football Club by a total of 12.25 match equivalent sessions per week.

LANCASTER PLAYING PITCH & OUTDOOR SPORTS STRATEGY STRATEGY & ACTION PLAN

Scenarios

Vale of Lune RUFC

Currently the pitches at Vale of Lune Rugby Union Football Club are overplayed by 12.25 match equivalent sessions per week, this is based on the worst case scenario with a small number of weeks throughout the year where there is a crossover of use for both rugby union and rugby league by Vale of Lune RUFC itself and rugby league demand from Heysham Atoms ARLFC, however it should be noted that this isn't the case all year round. Heysham Atoms ARLFC is set to relocate off the site in the near future with the below table exploring what impact this would have on the supply and demand of the rugby union provision moving forward if a relocation was successful.

Table 4.18: Capacity at Vale of Lune Rugby Union Football Club when rugby league demand is relocated

Site ID	Site name	No. of pitches	Current quality	Current capacity rating (match equivalent sessions)	Capacity after removing RFL demand
113	Vale of Lune Rugby Union Football Club	1	M1/D1 (Standard)	0.5	0.5
113	Vale of Lune Rugby Union Football Club	2	M0/D1 (Poor)	8	2.5
113	Vale of Lune Rugby Union Football Club	1	M0/D1 (Poor)	4.25	4.25
-	-	-	Total	12.25	6.75

Once the 5.5 match equivalent sessions per week have been relocated, the total level of overplay reduces from 12.25 to 6.75 match equivalent sessions. As there is still overplay remaining, the table below examines what impact improving all the pitches to the maximum quality rating would have on capacity.

Table 4.19: Capacity of overplayed pitches if quality was maximised (M2/D3)

Site ID	Site name	No. of pitches	Current quality	Current quality capacity rating (match equivalent sessions)	Good quality rating (match equivalent sessions)
113	Vale of Lune Rugby Union Football Club	1	M1/D1 (Standard)	0.5	2
113	Vale of Lune Rugby Union Football Club	2	M0/D1 (Poor)	2.5	1.5
113	Vale of Lune Rugby Union Football Club	1	M0/D1 (Poor)	4.25	2.25

If all the pitches were to be improved to the maximum quality rating of (M2/D3) overplay would be alleviated on the two poor quality pitches that do not have sports lighting, however, overplay would remain on the remaining poor quality sports lit pitch, as this is used for training demand.

Further to this, if demand was better dispersed across the pitches (which would also require additional sports lighting), all shortfalls would be alleviated and spare capacity of 1.25 match equivalent sessions per week created across the site.

LANCASTER PLAYING PITCH & OUTDOOR SPORTS STRATEGY STRATEGY & ACTION PLAN

Although some quality improvements are required to help alleviate overplay (particularly those assessed as poor quality), it is not always considered financially viable to carry out improvements to the extent of creating good quality pitches plus installing additional sports lighting.

Therefore, it is recommended that the poor quality pitches are improved to a more sustainable/standard quality level (M2/D1) with any remaining overplay remedied through the transfer of training demand off the site to WR compliant provision (three match equivalent sessions per week). This would also assist in providing relevant capacity for the Club's aspirational demand of two colts teams (one match equivalent sessions per week).

It should be noted that even though Heysham Atoms ARLFC is relocating off Vale of Lune RUFC, there may be a future need for use to be re-established should the Club continue to grow and require additional pitches for its matches. Therefore, the position should be reviewed in 12 months' time and a relationship between the two clubs preserved to enable potential future use of the site by Heysham Atmos ARLFC.

World Rugby (WR) compliant 3G pitches

As mentioned earlier, there is currently one WR compliant 3G pitch within the District at Lancaster University Sports Centre. The 3G pitch at Lancaster and Morecambe College has a shock pad, and was previously WR compliant, however, it has not been retested since 2018. It should also be noted that both pitches have limited community access with the former primarily being used for university demand and the latter used solely by Morecambe FC senior and junior teams.

Currently there is minimal rugby union demand taking place on the 3G pitch at Lancaster University Sports Centre from the University intermural teams and Vale of Lune RUFC (approximately one hour).

Options should be explored when resurfacing current 3G provision to make them WR compliant due to the issues regarding the accessibility of current stock, or for new 3G pitches to be developed to meet WR requirements. In particular, the 3G pitch at Bay Leadership Academy due to a potential link with rugby league as explained earlier in the document.

Removing training demand off Vale of Lune RUFC

Following on from the above, the table below tests the impact of removing the five match equivalent sessions per week of training demand off Vale of Lune RUFC pitches.

Table 4.18: Capacity at Vale of Lune RUFC when training demand is removed

Site ID	Site name	No. of pitches	Current quality	Current capacity rating (match equivalent sessions)	Capacity after removing training demand
113	Vale of Lune Rugby Union Football Club	1	M1/D1 (Standard)	0.5	0.5
113	Vale of Lune Rugby Union Football Club	2	M0/D1 (Poor)	8	8
113	Vale of Lune Rugby Union Football Club (Training Pitch)	1	M0/D1 (Poor)	4.25	0.75
-	-	-	Total	12.25	7.25

LANCASTER PLAYING PITCH & OUTDOOR SPORTS STRATEGY STRATEGY & ACTION PLAN

If the five match equivalent sessions per week are relocated, the total level of overplay reduces from 12.25 to 7.25 match equivalent sessions per week. Whilst overplay remains, the training pitch has now created spare capacity. With the likelihood that rugby league demand of 5.5 match equivalent sessions per week is to be relocated off the site, this would see an overall shortfall of 1.75 match equivalent sessions per week remain across the site. If pitch improvements through increased maintenance were also made across the site, then shortfalls could be alleviated.

Recommendations

- ◀ Protect existing quantity of pitches.
- ◀ Improve pitch quality at Vale of Lune Rugby Union Football Club through improved maintenance and/or the installation of drainage systems.
- ◀ Look to review the relocation of Heysham Atoms ARLFC over the coming years to ensure that the Club has sufficient provision and if required has additional access to pitches at Vale of Lune RUFC.
- ◀ Explore options to provide access to new or current World Rugby compliant 3G pitches for Vale of Lune RUFC.
- ◀ Ensure future demand can be adequately accommodated with focus on women's and girls' demand.
- ◀ Improve the ancillary facilities servicing the clubs and ensure facilities are inclusive and have appropriate segregation.
- ◀ Retain the stock of pitches at education sites for continued curricular and extra-curricular usage and encourage improved club links where possible.

4.5: Hockey suitable artificial grass pitches (AGPs)

Assessment Report summary

Summary - artificial grass pitches

- ◀ **There is a suitable number of pitches in the Lancaster District to accommodate both training and match play demand, however, there are accessibility and quality issues to be addressed.**

Supply

- ◀ There are six full size, hockey suitable AGPs in the Lancaster District across five sites all located in Lancaster Analysis Area, of these, two pitches are unavailable for community use at HMP Lancaster Farms and Lancaster Girls Grammar School. All four which are available for community use also have sports lighting.
- ◀ There are three small sized sand based AGPs in the District across three sites. Two of which are available for community use.
- ◀ All the community available hockey suitable AGPs are located on educational sites and are managed internally by each educational organisation.

Quality

- ◀ Of the four full size community available hockey suitable AGPs in the Lancaster District, three are rated as poor quality and one as standard quality.

Demand

- ◀ There are four hockey clubs based in the Lancaster District which in total accommodate three senior men's, nine senior women's and four dedicated junior teams.

LANCASTER PLAYING PITCH & OUTDOOR SPORTS STRATEGY STRATEGY & ACTION PLAN

Scenarios

Accommodating current and future demand

As a reminder one full size sports lit AGP is able to accommodate four match equivalent sessions on one day. With teams playing on a home and away basis, this equates to one AGP being able to cater for eight 'home' teams at peak time (one team requires 0.5 match equivalent sessions per week on its 'home' pitch). However, given restrictions on start times by the local league structures that senior teams play in, in Lancaster District; the number of matches accommodated during the peak period reduces from four to three, equating to six home teams playing on a home and away basis.

On the basis that there are four full size AGP available which can accommodate hockey matches in the District, this provides an opportunity to accommodate up to 24 hockey teams. With 12 Saturday teams currently playing in the District, there is sufficient spare capacity to accommodate demand. Currently there is a need for two pitches, however, as a strategic surplus and to allow for future growth there is a need for three pitches.

As the pitches at Lancaster University Sports Centre and University of Cumbria Sports Centre (Lancaster Campus) are already in use for community hockey demand these pitches are recommended to be protected. As a priority, in order to protect the longevity of hockey at these sites the pitches at Lancaster University Sports Centre need resurfacing in the short term. Additionally, look to gain long term access at both Lancaster University Sports Centre and University of Cumbria Sports Centre through secure agreements.

If the above can be obtained there is potential for remaining hockey suitable AGP in the District, Central Lancaster High School, can be refurbished as a 3G pitch in order to alleviate identified shortfalls.

It should be noted that any conversion of sand based AGPs to 3G should not take place unless consultation with England Hockey identifies the AGP is not required to meet existing or future predicted demand.

Recommendations

- ◀ Ensure that the full size hockey suitable AGPs at Lancaster University Sports Centre and University of Cumbria Sports Centre are protected for continued hockey use and the former sites pitches are resurfaced as soon as feasibly possible to continue to safely accommodate hockey in the Authority.
- ◀ Look to secure long term tenure for hockey at Lancaster University Sports Centre and University of Cumbria Sports Centre
- ◀ Once provision at Lancaster University Sports Centre and University of Cumbria Sports Centre is secured consider future usage of provision at Central Lancaster High School with relevant stakeholders.
- ◀ Encourage participation growth in the sport where feasible to do so in both competitive and recreational formats.

LANCASTER PLAYING PITCH & OUTDOOR SPORTS STRATEGY STRATEGY & ACTION PLAN

4.6: Tennis courts

Assessment Report summary

Tennis summary

- For club-based tennis, there is considered to be sufficient provision to meet demand. Additionally, when considering club future demand aspirations, supply is still sufficient to meet future demand at all courts apart from at Hest Bank Recreation Ground. If future demand is realised at Hest Bank Recreation Ground, the courts could become oversubscribed.
- For non-club courts, whilst no courts are identified as having any capacity issues, it cannot be said that supply is sufficient to meet demand due to the large amount of latent/unmet demand evidenced both nationally and in the Lancaster District. There is instead a clear need to improve the supply in ways that can attract and better accommodate more users.

Supply

- There are 70 tennis courts identified in the Lancaster District across 21 sites. Of which, 34 courts across 13 sites are available for community use and 36 courts across eight sites are unavailable for community use.
- Most are provided by education sites, although the Council manage three sites, parish councils manage four sites, sports clubs manage three sites and community organisations/private owners managing a site each.
- Most outdoor courts in the Lancaster District have a macadam surface (38 or 54%), with 21 being of this type and available for community use. Ten courts have an artificial turf surface which are all available for community use, three courts have a grass surface at Lunesdale Lawn Tennis Club, with two courts having a polymeric surface.
- In the Lancaster District, 34 tennis courts are serviced by sports lights, representing just under half (49%) of the total provision. Of these, 21 courts are available for community use.

Quality

- Of the courts in Lancaster, 18 (26%) are assessed as good quality, 41 (58%) as standard quality, and 11 (16%) as poor quality. All good quality courts are available for community use, whilst the poor quality courts in the District are located at Yealand Church of England Primary Schol, Ripley St Thomas CE Academy, Dolphinhholme Village Hall, Palatine Park and Bolton-le-Sands Playing Field.

Demand

- Five clubs are identified in the Lancaster District, as only three (out of five) clubs have responded to consultation requests, Lunesdale Lawn TC and Bowerham Lawn TC membership data was provided from the LTA. Therefore, the Lancaster District membership totals 494 members. As a breakdown, this equates to 370 senior and 124 junior members as shown in the table below.
- Away from club courts, usage can be difficult to quantify as it is not always monitored, especially at sites that are free to access. Demand for such provision is generally at its highest during summer months, especially following events such as Wimbledon, but significant capacity is likely to exist outside of this.
- In the Lancaster District, LTA Youth Start programmes are currently run at Lancaster Cricket & Sports Club and Lunesdale Lawn Tennis Club.

Scenarios

Increasing casual pay and play

In October 2021, the Government and the LTA announced a package of £30 million for investment and improvements for public tennis courts. The Government is to put £22 million whilst the LTA invest £8.4 million into the package. The investment is to be made into public tennis courts which are currently accessed as poor or unplayable quality, the investment will be to bring the courts back to a quality that will benefit the local community.

LANCASTER PLAYING PITCH & OUTDOOR SPORTS STRATEGY STRATEGY & ACTION PLAN

Using the above funding the LTA has developed a package of support for LAs to grow the use of park tennis courts by removing key barriers to participation. Instead of providing free access, some local authorities are now securing their courts as per a membership scheme that allows members access through the use of a fob system following payment of a small yearly fee. Not only does this deter unofficial use of courts but it also allows official use to be tracked, thus providing data on how well and how often courts are being accessed. In addition, it provides income generation that can go towards ongoing maintenance of the courts.

The Council is currently in talks with the LTA to invest in tennis courts in parks in the District. Investment into Palatine Park has already been identified with Happy Mount Park and Highfield Recreation Ground also being considered.

Accommodating current and future demand

The LTA suggests that a hard court without sports lighting can accommodate 40 members whereas a hard court with sports lighting can accommodate 60 members. For air domed courts, membership of 100 is considered applicable and permanent indoor courts can accommodate 200 members.

It should be noted that the abovementioned figures relate to LTA viability guidelines for clubs and are not the maximum capacity. The figure relates to what most clubs, based on the level of provision, would find sustainable. As grass courts are only available for 12 weeks of the year they are not included in membership numbers.

The table overleaf identifies the capacity balance at all sites currently used by clubs, taking into account both current demand and future demand.

LANCASTER PLAYING PITCH & OUTDOOR SPORTS STRATEGY STRATEGY & ACTION PLAN

Table 4.20: Capacity analysis (club courts)

Site ID	Site	Analysis area	Club users	Current demand (members)	Future demand (members)	No. of courts	Sports lighting?	Capacity (members)	Current capacity balance (members)	Future capacity balance (members)
9	Bolton Le Sands Playing Fields	Carnforth/Rural	Bolton-le-Sands TC	40	32	2	No	80	40	8
12	Bowerham Lawn Tennis Club	Lancaster	Bowerham LTC	126	-	4	Yes	240	114	114
35	Hest Bank Recreation Ground	Carnforth/Rural	Slyne-with-Hest TC	100	30	2	Yes	120	20	10
51	Lancaster Cricket & Sports Club	Lancaster	Lancaster TC	115	25	3	Yes	180	65	40
63	Lunesdale Lawn Tennis Club	Carnforth/Rural	Lunesdale LTC	113	-	2 ⁶	Yes	120	7	7

As shown, in the table above, current supply is sufficient to meet club-based demand. However, after considering club future demand aspirations, Slyne-with-Hest TC will be operating above their home venue's recommended capacity. It should be noted that although the Club would be above the recommended capacity if it realised its future demand, the capacity is a guide and isn't always applicable to all sites. As the future capacity to only being minimal of 10 members above the recommended capacity and due to the Club expressing a desire to increase its members it is expected that Hest Bank Recreation Ground courts could accommodate this future demand.

⁶ Site also has three grass tennis courts with no sports lighting available through the summer for members. These courts are not accounted for as part of the capacity as they are not available year-round.

LANCASTER PLAYING PITCH & OUTDOOR SPORTS STRATEGY STRATEGY & ACTION PLAN

Recommendations

- ◀ Protect existing quantity of courts.
- ◀ Sustain good court quality of community available courts and work to ensure that demand can continue to be met.
- ◀ Look to add additional sports lighting to Bolton Le Sands Playing Fields tennis courts in the Lancaster District to allow for more usage of the provision.
- ◀ Ensure sinking funds are put into place by providers for long-term sustainability.
- ◀ Improve ancillary provision servicing courts where demand is, or could be, high.
- ◀ Support opportunities to provide padel courts given its growing demand, providing that no existing in-use traditional courts are lost as a result.

4.7: Athletics

Assessment Report summary

Athletics – supply and demand summary

- ◀ In Lancaster District, supply is considered sufficient to meet demand, with only two track and field clubs currently based in the District (Lancaster and Morecambe Athletic Club and Lancaster University Athletic Club). All other clubs are primarily road running clubs that do not access the track facilities.

Supply

- ◀ There is one formal athletics track in the Lancaster District located at Salt Ayre leisure Centre, which is an eight lane, synthetic 400 metre track.
- ◀ The track is fully sports lit and provides all accompanying field event facilities including a hammer cage, javelin, high jump, long jump and shot put area.
- ◀ Due to no pole vault and insufficient quality of water jumps, the track has limitations on what type of competition it accommodates.
- ◀ The track at Salt Ayre Leisure Centre is owned and managed by the City Council.

Quality

- ◀ The non-technical assessment undertaken by KKP identified the track and accompanying track and field facilities as standard quality, with maintenance carried out to a basic standard.
- ◀ The changing room provision at Salt Ayre leisure Centre is rated to be of good quality, with no major issues raised.

Demand

- ◀ Four clubs have a current focus on athletics and/or running activity in the Lancaster District.
- ◀ Lancaster and Morecambe Athletic Club and Lancaster University Athletics Club both use Salt Ayre Leisure Centre as its base.
- ◀ Williamson Park, Morecambe Prom and Ryelands Park currently host Park Runs and Junior Park Runs in the District.
- ◀ All clubs are seen to be actively looking to grow membership, whilst England Athletics also believes that demand is likely to increase in the future, particularly for initiatives such as Park Run.
- ◀ Sport England's Segmentation Tool enables analysis of 'the percentage of adults that would like to participate in athletics but 'are not currently doing so'. The tool identifies significant latent demand amounting to 3,174 people in the Lancaster District, which represents approximately 2.1% of the District's population compared to a national average of 2%.
- ◀ None have waiting lists in place, and they are all actively looking for new members, on social media and club websites.

Scenarios

As supply is sufficient to meet demand, there is no requirement for any scenarios to be run.

LANCASTER PLAYING PITCH & OUTDOOR SPORTS STRATEGY STRATEGY & ACTION PLAN

Recommendations

- Protecting existing track facilities.
- Ensure the provision remains Trackmark compliant and look to progress its accreditation to allow for larger events.
- Ensure that sink fund provision is made for track respray/resurface when required (next 3-5 years).
- Explore opportunities to improve the quality of the water jumps and establish pole vault in the longer term.
- Support clubs, running groups, events and England Athletics initiatives such as Park Run and pursue increased participation, where possible.
- Ensure all clubs/groups continue to have home bases to operate from and pursue improved security of tenure where it is required.
- Explore opportunities to include ActiveTracks in parks and open spaces or as part of new housing developments (Active Environment).

4.8: Bowling greens

Assessment Report summary

Bowls summary

- Five clubs are operating at or above recommended capacity levels and therefore need to be monitored to ensure that supply remains adequate.**
- In general, future demand expressed can be accommodated on existing greens. However, if future demand comes to fruition, Luneside & Rosebank BC would see its site significantly over subscribed.**

Supply

- There are 29 bowling greens in the Lancaster District located across 24 sites, of which, five sites are accommodating more than one green. All greens are available for community use.
- The Carnforth/Rural Analysis Area has the most greens with 13 (45%), this is followed by the Lancaster Analysis Area with 11 (38%). The least amount of provision is in the Morecambe and Heysham Analysis Area with five (17%) greens.
- Most bowling greens are owned and managed by the Local Authority, private ownerships, or the respective sports club.
- Most greens (24 or 83%) are rated as good quality, with four greens (14%) rated as standard quality and one green (3%) at Milhead Recreation Ground rated as poor quality.

Demand

- There are 27 bowling clubs identified as playing in the Lancaster District although only 52% have responded to consultation requests to date. Where known, membership of the responsive clubs' totals 736.
- The largest club according to known membership is currently Luneside & Rosebank BC, with 72 members, followed closely by Galgate BC with 70 members. The smallest club is Jubilee BC with only 19 members.
- Of the responding clubs, four clubs highlight plans to increase membership. These aspirations total 162 additional members.

Scenarios

Accommodating current and future demand

British Crown Green Bowling Association does not have any specific guidance on bowling green capacity, stating that it can vary from site-to-site and from club-to-club. However, as a guide, it states that any green operating with a membership of close to or over 60 may need additional resource to ensure that it is meeting its required level of demand. Five clubs are currently operating at or above this threshold in Lancaster, as follows:

- Carnforth BC (60 members)
- Galgate BC (70 members)

LANCASTER PLAYING PITCH & OUTDOOR SPORTS STRATEGY STRATEGY & ACTION PLAN

- ◀ Lune Road BC (72 members)
- ◀ Luneside & Rosebank BC (72 members)
- ◀ Skerton BC (62 members)

Of these, no clubs currently report any capacity issues, with Luneside & Rosebank BC expressing an aspiration to further increase their memberships. All five clubs should be closely monitored to ensure that their greens do not become oversubscribed. In addition, if future demand was realised by Dolphinholme BC, Overton BC and Silverdale BC these clubs would also be operating at or above capacity and therefore should also be monitored to ensure demand can be met in the future.

Recommendations

- ◀ Protect all existing greens that are in use, unless it can be robustly demonstrated that demand can be met elsewhere, and that appropriate mitigation is provided to enable this.
- ◀ Improve green quality at sites assessed as poor and standard quality and sustain quality at sites assessed as good.
- ◀ Seek to improve ancillary facility quality where it is necessary.
- ◀ Support clubs operating with a high membership to ensure demand continues to be met on their existing provision.
- ◀ Support clubs operating with a low membership to ensure that they remain sustainable.
- ◀ Support and signpost activities and initiatives that will enable clubs to grow membership.

4.9: Rugby league – grass pitches

Assessment Report summary

Summary – Rugby league

- ◀ **There is an insufficient supply of provision in the Lancaster District to accommodate both current and anticipated future levels of demand for rugby league.**
- ◀ **The priority for rugby league in the Lancaster District is to ensure development of rugby league facilities at King Georges Playing Field (Morecambe) for the relocation of Heysham Atoms ARLFC. Maintenance programmes should be put in place to ensure pitches don't become overplayed and that there is adequate capacity for the growth of the Club.**

Supply

- ◀ There are no dedicated rugby league pitches marked in the Lancaster District.
- ◀ Heysham Atoms RLFC has come to an agreement with the Council and Westgate Wanderers FC to join the lease at King Georges Playing Field (Morecambe). The Club will relocate with plans in place to have a senior rugby league pitch marked at King Georges Playing Field (Morecambe), whilst also using other areas of the site for training and junior pitches.

Demand

- ◀ There is one affiliated rugby league club located in the Lancaster District, Heysham Atoms ARLFC. The Club accommodates nine teams.
- ◀ Future demand from population increases is projected as zero teams.

Capacity

- ◀ As the Club is moving to a new site which plans to have one senior pitch and one dual use rugby league/football pitch, these pitches should be of good quality. Good quality pitches provide three match equivalent sessions per week, this will ensure that the demand can be catered for without overplaying the pitches and causing lasting damage.

LANCASTER PLAYING PITCH & OUTDOOR SPORTS STRATEGY STRATEGY & ACTION PLAN

Scenarios

Heysham Atoms ARLFC

Heysham Atoms ARLFC is in the process of relocating from Vale of Lune Rugby Union Football Club to King Georges Playing Field (Morecambe). The Club currently has a total of 5.5 match equivalent sessions per week worth of demand. In order to accommodate this demand, there would need to be a minimum of two good quality rugby league grass pitches established as each pitch could accommodate up to three match equivalent sessions per week worth of demand. It is likely that the development will have rugby league pitch and one dual use rugby league/football pitch, which may cause capacity issues due to dual use.

As mentioned earlier in the document, The RFL indicates that options should be explored when resurfacing the full size 3G pitch at the adjacent Bay Leadership Academy to make it WR/RFL compliant in order to accommodate rugby demand from Heysham Atoms ARLFC, in addition this could also support the training demand requirements for Vale of Lune RUFC. This is due to the fact that neither club has regular guaranteed access to such provision. Further dialogue would need to take place between the relevant stakeholders to understand if this is feasible and to understand potential usage between community users (football, rugby league and rugby union).

Conversely, it is evident that there is a further requirement to gain access and to provide a WR and RFL compliant surface for both established clubs in the District. Therefore, it is recommended that one; of an existing pitch which meets requirements for compliancy, an existing pitch which does not meet the requirements for compliancy is developed in order to do so, or a new pitch development is built to the specification for compliancy is made accessible and available for both rugby union and rugby league training demand within the Lancaster District.

Recommendations

- ◀ Assist Heysham Atoms ARLFC in relocating from Vale of Lune Rugby Union Football Club to King Georges Playing Fields (Morecambe).
- ◀ Create a minimum of one good quality rugby league pitch and one good quality dual use rugby league/football pitch on the site.
- ◀ Explore the potential to make the 3G pitch at Bay Leadership Academy Rugby League compliant and secure access.
- ◀ Look to review the relocation of Heysham Atoms ARLFC over the coming years to ensure that the Club has sufficient provision and if required has additional access to pitches at Vale of Lune RUFC.
- ◀ Explore options to provide access to new or current WR/RFL compliant 3G pitches for Heysham Atoms ARLFC.

LANCASTER PLAYING PITCH & OUTDOOR SPORTS STRATEGY STRATEGY & ACTION PLAN

4.10: Cycling

Assessment Report summary

Cycling supply and demand summary

- ◀ It is considered that there is sufficient closed road cycling facilities in the District with the Salt Ayre Leisure Centre facility servicing multiple clubs in the Lancaster District.
- ◀ There is no BMX or mountain bike trails within the District, however, there are a number within neighbouring authorities and therefore any residents from within the Lancaster District are likely to travel outside of the District to access such facilities.

Cycling supply summary

- ◀ There is one dedicated cycling facilities in the Lancaster District, a closed road circuit track at Salt Ayre Leisure Centre.
- ◀ The track is considered to be of good quality.

Cycling demand summary

- ◀ Lancaster Cycling Club has 45 affiliated members and promotes club time trials each Thursday from April to September. The Club utilise Salt Ayre Racing Cycle Circuit which is located at the Salt Ayre Leisure Centre.
- ◀ Salt Ayre Cog Set runs Saturday morning road and mountain bike sessions at the Salt Ayre cycle track at Salt Ayre Leisure Centre from March until the end of October. Extra training sessions take place on Monday evenings through the racing season.
- ◀ Cog Set Papyrus Racing Club has 35 affiliated members and is the race and development team affiliated to Salt Ayre Cog Set. The aim of the Club is to support those riders wishing to continue their cycling through the upper youth, junior and U23 ranks.
- ◀ Lune Racing Cycling Club has three weekly training sessions with road cycling sessions on Sunday and Friday mornings and a closed road cycling session at Salt Ayre Leisure Centre on Tuesday evenings.
- ◀ There is one Go-Ride accredited cycling club (Salt Ayre Cog Set), whilst there is no Breeze programmes operating within the Lancaster District.
- ◀ Sport England's Segmentation Tool enables analysis of 'the percentage of adults that would like to participate in cycling but are not currently doing so'. The tool identifies latent demand of 6,242 people who would like to participate in the sport within the Lancaster District which equates to 4.2% of the District's population. This is marginally higher when compared to the national average of approximately 3.4%.

Scenarios

As supply is sufficient to meet demand, there is no requirement for any scenarios to be run.

Recommendations

- ◀ Ensure continued access to sites and routes used for formal cycling.
- ◀ Consider creation of a Cycling Network that can link up with school and park sites.
- ◀ Explore the creation and/or more regular access to traffic free provision.
- ◀ Ensure all clubs/groups have home bases to operate from and pursue improved security of tenure where it is required.

LANCASTER PLAYING PITCH & OUTDOOR SPORTS STRATEGY STRATEGY & ACTION PLAN

4.11: Golf courses

Assessment Report summary

Golf – supply and demand summary

- ◀ **With six golf facilities in the Lancaster District and a mix of 18-hole and 9-hole courses, supply is well placed to meet demand.**
- ◀ **Notwithstanding the above, there may be a gap in demand for a par three golf facility within the Lancaster District.**
- ◀ **In the meantime, emphasis should be placed on protecting the facilities that are provided, with options explored to increase demand to more sustainable levels.**

Golf – supply summary

- ◀ There are currently six golf venues in the Lancaster District.
- ◀ All six golf sites within the District provide one standard hole course, with four 18-hole courses (Lancaster, Heysham, Morecambe and Silverdale golf clubs) and two 9-hole courses (Ashton Golf Centre and Lansil Sports and Social Club) in place.
- ◀ There are two driving ranges identified (Heysham Golf Club and Lancaster Golf Club).
- ◀ No Par 3 course is identified.
- ◀ Lancaster, Heysham, Morecambe Silverdale and Lansil golf clubs are members clubs whereas Ashton Golf Centre is a municipal course.
- ◀ In the Lancaster District, membership to all but one course is lower than the national average for membership costs with Lancaster Golf Club being above the national average and highest in the District with a pricing of £1,176 which suggests the facility is relatively high-end.
- ◀ In terms of quality of the golf facilities, it is relatively good across the Lancaster District with no significant issues identified.

Golf – demand summary

- ◀ Club-specific membership figures are no longer available via England Golf although average membership across the five affiliated clubs in the Lancaster District (Heysham, Silverdale, Morecambe, Lancaster and Lansil) equates to 451, which exceeds the national average of 407.
- ◀ There has been a 9% growth in demand across the Lancaster District since 2018.
- ◀ England Golf's mapping tool identifies a significant amount of potential demand, with Lansil Sports and Social Club shown to have the highest population base.
- ◀ Pay and play usage is unknown but is likely to be highest at sites such as Ashton Golf Centre, Lansil Sports and Social Club and Morecambe Golf Club which have the operational structure in place and the lower price point.

Scenarios

As supply is sufficient to meet demand, there is no requirement for any scenarios to be run.

Recommendations

- ◀ Retain and protect all existing, in use golf provision.
- ◀ Sustain course and ancillary facility quality and seek improvements where necessary.
- ◀ Support clubs in membership retention and potential growth and encourage clubs and providers to work more collaboratively in terms of creating pathways for players.
- ◀ Explore opportunities to provide informal golf opportunities within the District such as driving range bays and pitch and putt courses.
- ◀ Explore the gap in demand for a par three golf facility within the District.

LANCASTER PLAYING PITCH & OUTDOOR SPORTS STRATEGY STRATEGY & ACTION PLAN

4.12: Other sports

Assessment Report summary

American football summary

- ◀ **Supply of facilities for American football can sufficiently cater for current levels of demand based on present levels of maintenance, access and total sporting use.**
- ◀ **Natural turf pitches used for American football are dually used for other sports and robust maintenance regimes must be employed and overall use by all sports monitored to ensure that sufficient capacity and quality exists to continue to sustain dual usage.**
- ◀ There is one American football club with one team. Based at Lancaster University (Lancaster Bombers).
- ◀ All matches are played on natural turf pitches used for other sports at Lancaster University (rugby union).

Lacrosse summary

- ◀ **Supply of facilities for lacrosse can sufficiently cater for current levels of demand on either artificial or natural turf pitches, whilst future growth and generation of additional teams can be met through increased use of the grass pitch onsite.**
- ◀ Only Lancaster University fields lacrosse teams and there are no community clubs. The University has one men's and two women's teams.
- ◀ All match play and training is accommodated onsite. Matches are played on the AGP or grass pitch when programming requires, with training held on the AGP or 3G pitch.

Scenarios

As supply is sufficient to meet demand, there is no requirement for any scenarios to be run.

Recommendations

- ◀ Ensure continued access to existing sites and pitches to enable continued access for all relevant sports.
- ◀ Sustain quality and look to make improvements when necessary to ensure that demand can continue to be met.
- ◀ Ensure robust maintenance regimes are employed and overall use by all sports monitored to guarantee that sufficient capacity and quality exists to continue to sustain dual usage.

LANCASTER PLAYING PITCH & OUTDOOR SPORTS STRATEGY STRATEGY & ACTION PLAN

PART 5: STRATEGIC RECOMMENDATIONS

The strategic recommendations for the Strategy have been developed via a combination of information gathered during consultation, site visits and analysis which culminated in the production of an assessment report, as well as key drivers identified for the Strategy. They reflect overarching and common areas to be addressed, which apply across outdoor sports facilities and may not be specific to just one sport.

OBJECTIVE 1

To **protect** the existing supply of outdoor sport provision and ancillary facilities where it is needed for meeting current and future needs.

Recommendations:

- a) Ensure, through the use of the PPOSS, that playing pitches and outdoor sport facilities are protected through the implementation of local planning policy.
- b) Secure tenure and access to sites for high quality, development minded clubs, through a range of solutions and partnership agreements.
- c) Maximise community use of education facilities where needed.

Recommendation (a) – Ensure, through the use of the PPOSS, that playing pitches and outdoor sport facilities are protected through the implementation of local planning policy.

The PPOSS Assessment shows that all currently used outdoor sports sites require protection and therefore cannot be deemed surplus to requirements because shortfalls would occur both now and, in the future, if they were lost. Consideration should also be given to the protection of underused and poor quality sites from development or replacement as they may offer potential to meet shortfalls, particularly for, in the future.

National Planning Policy Framework (NPPF) Paragraph 103 states that existing open space, sports and recreational buildings and land, including playing fields, should not be built on unless:

- ◀ An assessment has been undertaken which has clearly shown the open space, buildings or land to be surplus to requirements; or
- ◀ The loss resulting from the proposed development would be replaced by equivalent or better provision in terms of quantity and quality in a suitable location; or
- ◀ The development is for alternative sports and recreational provision, the benefits of which clearly outweigh the loss of the current or former use.

Should outdoor sports facilities be taken out of use for any reason (e.g. council budget restraints), land should ideally be retained so that it can be brought back into use in the future (where demand requires).

LANCASTER PLAYING PITCH & OUTDOOR SPORTS STRATEGY STRATEGY & ACTION PLAN

Although there are identified shortfalls of match equivalent sessions i.e., for cricket, rugby union and football pitches, most of these shortfalls can be addressed through quality improvements as demonstrated in the scenarios. However, it is recommended that due to current pressures on the limited number of sites within Carnforth, there is a need for a new playing field site. The Club should be supported in its efforts to find suitable facilities for expanded use, whether this be through opportunities presented in the forthcoming Local Plan Review or elsewhere. Any new facilities should form a new home for the Club, where it can play across its existing site(s) and/or within new facilities in order to support its current demands and future growth.

The PPOSS should be used to help inform Development Management decisions that affect existing or new outdoor sports and ancillary facilities. All applications are assessed by the Local Planning Authority on a case by case basis taking into account site specific factors. Sport England provides a non-statutory role for identifying what sports facilities should be provided with requested financial contributions which will be requested based on the use of Sport England's facility calculators.

Please note that Sport England is a statutory consultee on planning applications that affect or prejudice the use of playing fields and will use the PPOSS to help assess that planning proposals against NPPF and its Playing Fields Policy⁷.

Disused sites

A disused site is a site where pitches were once, but are no longer, marked out and remain undeveloped. In the first instance they can provide a potential solution to reducing identified shortfalls when affected by development proposals.

Disused sites will be considered against Local Plan policy and NPPF/Sport England's Playing Field Policy.

The lawful use of a disused playing field is still that of a playing field until such time as its use is formally changed through the planning system. There is no positive obligation, under planning law, for a playing field to be actively used as such. The table below lists disused sites within the District.

Table 5.1: Disused outdoor sports sites in Lancaster District

Site name	Analysis area	Sport(s)	Status (last used)	Comments
The Bowerham Hotel	Lancaster	Bowling	Disused (2015)	Green which is no longer maintained for use. Planning application for the re-development of this site submitted with Lancaster City Council ref: 23/01216/FUL
Glasson Dock Bowling Club	Carnforth & Rural	Bowling	Disused (2005)	Linked to neighbouring Victoria Inn which was purchased to be refurbished, however plans have since changed, with the owners considering development. Local residents fighting to retain what is a listed building.

⁷[Link to Sport England Playing Fields Policy](#)

LANCASTER PLAYING PITCH & OUTDOOR SPORTS STRATEGY STRATEGY & ACTION PLAN

Site name	Analysis area	Sport(s)	Status (last used)	Comments
Lancaster Moor Hospital Cricket Club	Lancaster	Cricket Bowling	Disused (2005)	Pavilion has since been demolished and the bowling green is to be lost to residential development. Site now maintained as public open space with S106 contribution secured allocated to Far Moor.
Skerton Community High School	Lancaster	Football Cricket Tennis/ Netball	Disused (2014)	Sports pitches previously part of the school provision which closed in 2014. When in use in connection with the school the sports areas were not available for community use. Two pitches, separate previous cricket square and three courts for tennis and netball. Sports field land still exists but site not accessible or marked out. This site has recently been purchased by the City Council.
Acre Moss Lane	Heysham & Morecambe	Football	Disused (2016)	Sports pitches previously part of the school provision which closed in 2014. When in use in connection with the school the sports areas were not available for community use. Two pitches, previous cricket square and three courts. Playing field land still exists but site not accessible or marked out. A planning application for the re-development of this site is now submitted with Lancaster City Council ref: 23/01423/FUL
Cumberland View	Heysham and Morecambe	Bowls	Disused (2019)	One disused crown green. Now utilised as a beer garden. The Club previously based onsite has relocated to the green at The Trimpell Club.
The Bay Horse Inn	Carnforth/ Rural	Bowls	Disused (2021)	One disused crown green. Now utilised as a chicken coop.
The Station Hotel	Carnforth/ Rural	Bowls	Disused (2022)	One disused crown green. Now utilised as a beer garden. The Club previously based onsite has relocated to the green at Lansil Sports & Social Club.

Any disused playing fields are included within the Action Plan together with a recommendation in relation to potentially bringing the site back into use or to mitigate the loss on a replacement site to address the shortfalls identified.

In addition to the above, there are some existing playing field sites which may be able to or have previously accommodated more pitches than are presently marked. Where known, these will be identified in the action plan. There may also be sites which are no longer prepared and used for formal sport but also have another function, such as a public open space or park. These sites should not be considered disused as they continue to operate as part of open space typology and also remain by definition, playing field land.

LANCASTER PLAYING PITCH & OUTDOOR SPORTS STRATEGY STRATEGY & ACTION PLAN

Recommendation (b) – Secure tenure and access to sites through a range of solutions and partnership agreements.

A number of school, commercial and private sites are being used in the Lancaster District for competitive play, predominantly for football as an example at Lancaster University Sports Centre and Carnforth High School. In some cases, use of pitches has been classified as secure; however, use is not necessarily formalised, meaning relevant organisations should seek to establish appropriate community use agreements, including access to changing provision where required/available. This is especially the case for sites that have unsecured community use despite receiving high levels of use.

For unsecure sites, NGBs, Sport England and other appropriate bodies such as Active Lancashire and the Football Foundation can often help to negotiate and engage with providers where the local authority may not have direct influence. This is particularly the case at sites that have received funding from these bodies or are going to receive funding in the future as community access can be a condition of the agreement.

In the context of the October 2021 Comprehensive Spending Review⁸, which announced public spending cuts, it is increasingly important for the Council to work with voluntary sector organisations to enable them to take greater levels of ownership and support the wider development and maintenance of facilities. To facilitate this, where practical, it should support and enable clubs to generate sufficient funds, providing that this is to the benefit of sport.

The Council as well as parish and town councils should further explore opportunities where security of tenure could be granted via long-term lease agreements (a minimum of 25 years is often recommended by Sport England and NGBs) so that clubs are in a position to apply for external funding. This is particularly the case at poor quality, low value local authority sites, possibly with inadequate or no ancillary facilities, so that quality can subsequently be improved, and sites developed.

Local sports clubs with or entering into lease agreements should be supported by partners to achieve sustainability across a range of areas including management, membership, funding, facilities, volunteers and partnership work. For example, such clubs should be encouraged to develop evidence of business and sports development plans to generate income via their facilities.

All clubs could be encouraged to look at different management models such as registering as Community Amateur Sports Clubs (CASC)⁹. They should also be encouraged to work with partners locally, such as volunteer support agencies and local businesses.

For clubs with lease arrangements already in place, these should be reviewed when fewer than 25 years remain on existing agreements to secure extensions, thus improving security of tenure and helping them to attract funding for site developments, if it is required. Any club with less than 25 years remaining on an agreement is unlikely to gain any external funding (unless the agreement has been recently entered into).

Each club interested in leasing a council site should be required to meet service and/or strategic recommendations. An additional set of criteria should also be considered, which takes into account club quality, aligned to its long-term development objectives and sustainability, as seen in the table below.

⁸ <https://www.gov.uk/government/news/chancellor-launches-vision-for-future-public-spending>

⁹ <http://www.cascinfo.co.uk/cascbenefits>

LANCASTER PLAYING PITCH & OUTDOOR SPORTS STRATEGY STRATEGY & ACTION PLAN

Table 5.2: Recommended criteria for lease of council sport sites to clubs/organisations

Club	Site
<p>Clubs should have Clubmark/NGB accreditation.</p> <p>Clubs commit to meeting demonstrable local demand and show pro-active commitment to developing school-club links.</p> <p>Clubs are sustainable, both in a financial sense and via their internal management structures in relation to recruitment and retention policy for both players and volunteers. Strong business plans could also be created by the clubs to illustrate this.</p> <p>Ideally, clubs should have already identified any match funding required for initial capital investment identified.</p>	<p>Sites should be those identified as 'Local Sites' (recommendation d) for new clubs (i.e., not those with a districtwide significance) but that offer development potential.</p> <p>For established clubs which have proven success in terms of self-management 'Key Centres' are also appropriate.</p> <p>As a priority, sites should acquire capital investment to improve (which can be attributed to an accreditation award).</p> <p>Sites should be leased with the intention that investment can be sourced to contribute towards the improvement of the site.</p>

The Council could also establish a series of core outcomes to derive from clubs taking on a lease arrangement to ensure that the most appropriate clubs are assigned to sites. For example, outcomes may include:

- ◀ Increasing participation.
- ◀ Supporting the development of coaches and volunteers.
- ◀ Commitment to quality standards.
- ◀ Improvements (where required) to facilities, or as a minimum retaining existing standards.

In addition, clubs should be made fully aware of the associated responsibilities/liabilities when considering leases of multi-use public playing fields. It is important in these instances that the site remains available for other purposes or for other users.

Recommendation (c) - To work with educational establishments to encourage community use of pitch sporting facilities, particularly where demand is not being met by appropriate community-based facilities.

To maximise community use, a more coherent, structured relationship with schools is recommended. The ability to access good facilities within the local community is vital to any sports organisation, yet many clubs struggle to find good quality places to play and train. In the Lancaster District, there are 12 football pitches at educational sites which are unavailable for community use, whilst there are 24 available football pitches. Further to this, there are 46 football pitches at school sites which no longer accommodate active football provision compared to the 2018 PPOSS. Pitches are considered unavailable for a number of reasons, with one of the main reasons being poor pitch quality.

According to the assessment, poor quality is an issue at school sites, for example, all 12 of the unavailable school football pitches are assessed as poor quality. Central Lancaster High School and Morecambe Bay Academy are the biggest school sites that are unavailable for community use but which, if improved could help meet shortfalls identified.

Further to this anecdotal evidence from consultation with clubs suggests that resistance from schools to open up provision is also an issue, which may relate to several things such as the cost of opening up facilities and wanting to protect provision for school use, especially where it is poor quality.

LANCASTER PLAYING PITCH & OUTDOOR SPORTS STRATEGY STRATEGY & ACTION PLAN

A large number of sporting facilities are located on education sites and making these available to sports clubs can offer significant benefits to both the venues and local clubs, as well helping to reduce identified shortfalls. It is, however, common for provision not to be fully maximised for community use, even on established community use sites. In some instances, facilities are unavailable for community use due to poor quality and therefore remedial works will be required before it can be established. The low carrying capacity of these facilities sometimes leads to them being played to capacity or overplayed simply due to curricular and extra-curricular use, meaning they cannot accommodate any additional use by the community.

Although there are a growing number of academies over which the Council has little or no control, it is still important to understand the significance of such sites and attempt to work with the providers where there are opportunities for community use. In addition, relevant NGBs have a role to play in supporting the Council to deliver upon this recommendation and communicating with schools where necessary to address shortfalls in provision.

As detailed earlier, NGBs, Active Lancashire and Sport England can often help to negotiate and engage with schools where the local authority may have limited direct influence. This is particularly the case at sites that have received funding from the relevant bodies or are going to receive funding in the future as community access can be a condition of the funding agreement.

Where new schools are provided, they should be designed to facilitate community access, with opportunities for meeting the community's outdoor sports needs explored at the outset to maximise the potential impact of the provision. An example of this is ensuring the provision of youth 11v11 grass football pitches, given current shortfalls and their suitability for the playing format of students, or multi-use provision such as courts that can accommodate for sports such as tennis.

LANCASTER PLAYING PITCH & OUTDOOR SPORTS STRATEGY STRATEGY & ACTION PLAN

OBJECTIVE 2

To **enhance** outdoor sport provision and ancillary facilities through improving quality and management of sites

Recommendations:

- d) Improve quality.
- e) Adopt a tiered approach (hierarchy of provision) to the management and improvement of sites.
- f) Work in partnership with stakeholders to secure funding.
- g) Secure developer contributions through Section 106.

Recommendation (d) – Improve quality

There are a number of ways in which it is possible to improve quality, including, for example, addressing overplay and improving maintenance. Given the number of councils' facing reduced budgets, it is currently advisable to look at improving key sites as a priority (e.g., the largest, well used sites that are overplayed and/or poor quality). The Action Plan within this document provides a starting point for this, identifying key sites, poor quality sites and/or sites that are overplayed which should be prioritised for improvement.

With pressures on budgets, any wide-ranging direct investment into quality is unlikely and other options for improvements should be considered. This could be via clubs leasing/managing sites as highlighted in Objective 1, with clubs taking on maintenance, whilst other options may include the use of equipment banks and the pooling of resources for maintenance.

Ground Maintenance Association (GMA) Pitch Advisory Service

With quality of grass pitches becoming one of the biggest influences on participation, the Pitch Advisory Service (PAS, formerly the Grounds and Natural Turf Improvement Programme) was launched in 2014 and is funded by the Football Foundation and Sport England, working in association with its partners the ECB, RFU and RFL.

Its aim is to raise the standards of sports surfaces as well as the understanding of sports turf management practices among grassroots clubs across England and Wales. The PAS provides an enhanced network of support and expertise available to those maintaining natural turf pitches, particularly at a local level.

The service can be utilised by grassroots clubs, organisations and local authorities with the simple aim of improving the quality of grass pitches. The key principles behind the service are to provide members of the programme with advice/practical solutions via a report which will also identify the key enhanced maintenance works required along with machinery requirements.

Pitch providers are encouraged to complete a self-assessment of pitches using the Football Foundation PitchPower app. In August 2022, PitchPower was re-launched, with enhanced capability to support use beyond football pitches and is now accessible for the assessment of natural turf pitches for cricket, rugby league and rugby union.

LANCASTER PLAYING PITCH & OUTDOOR SPORTS STRATEGY STRATEGY & ACTION PLAN

Please note that PitchPower produces a Performance Quality Standard (PQS) assessment report, different for each of the sports.

Football Foundation Grass Pitch Maintenance Fund (GPMF)

Eligible clubs and organisations can also utilise the report as an evidence base to acquire potential funding streams, for example, to obtain the required maintenance equipment. If a PitchPower assessment categorises pitches as 'poor' or 'basic' they are then eligible to apply for Grass Pitch Funding through the Football Foundation through the Grass Pitch Maintenance Fund¹⁰, a fund offering six-year tapered grants to help organisations enhance or sustain the quality of their grass pitches. The fund is a key part of the Football Foundation's Grass Pitch Improvement Programme - an ambition to deliver 20,000 good quality grass pitches by 2030. Clubs with good quality pitches can also apply for a lower level of funding to sustain good quality.

All applicants must have received a PitchPower Pitch Assessment Report, with the fund currently open to football clubs (except for pitches used for National League System play), leagues, County FAs, community organisations, charities, education organisations and parish/town councils. Local authorities are not currently eligible applicants, however, eligible organisations using local authority sites can apply provided they have permission of the landowner via a service level agreement.

The Council is not presently eligible to access the GPMF as an applicant, however, can undertake technical assessment of pitches using the PitchPower app. Opportunities to access the fund to support presently council managed sites include establishment of a service level agreement with a resident club for maintenance responsibilities, or transfer of long-term management to the club/organisation through leasehold or CAT, both enabling the club/organisation to apply to the fund.

Furthermore, the Football Foundation also launched a new Groundskeeping Community online platform in 2019 which provides a resource of expert advice for grounds staff, enabling them to connect with peers, discover new tips and tricks and share advice on best industry practice. Users can seek guidance from the GMA regional pitch advisors, who are available to answer questions and update members on changes to industry standards.

Addressing quality issues

Where facilities are assessed as standard or poor quality and/or overplayed, maintenance regimes should be reviewed and, where possible, improved to ensure that what is being done is of an appropriate standard to sustain/improve pitch quality. Ensuring continuance of existing maintenance of good quality sites is also essential.

It is also important to note the impact the weather has on quality. The worse the weather, the poorer facilities tend to become, especially if there is no dedicated drainage system in place or if existing drainage systems are inadequate or have become compromised or poorly maintained. This also means that quality can vary, year on year, dependent upon the weather and levels of rainfall.

¹⁰ <https://footballfoundation.org.uk/grant/grass-pitch-maintenance-fund>

LANCASTER PLAYING PITCH & OUTDOOR SPORTS STRATEGY STRATEGY & ACTION PLAN

Based upon an achievable target using existing quality scoring to provide a baseline, a standard should be used to identify deficiencies and investment should be focused on those sites which fail to meet the proposed quality standard (using the site audit database as provided in electronic format). The Strategy approach to outdoor sports facilities achieving these standards should be to enhance quality and therefore the planning system should seek to protect them.

For the purposes of quality assessments, the PPOSS refers to outdoor sports facilities and ancillary facilities separately as being of 'Good', 'Standard' or 'Poor' quality. For example, some good quality sites have poor quality elements and vice versa (e.g. a good quality pitch may be serviced by poor quality changing facilities).

Good quality refers to pitches that have, for example, good grass cover, an even surface, are free from vandalism and litter. For rugby union, a good quality pitch is also pipe and/or slit drained. In terms of ancillary facilities, good quality refers to access for disabled people, sufficient provision for referees, juniors/women/girls and appropriate provision of showers, toilets and car parking.

Standard quality refers to pitches that have, for example, adequate grass cover, minimal signs of wear and tear and goalposts may be secure but in need of minor repair. For rugby union, drainage is natural but adequate. In terms of ancillary facilities, standard quality refers to adequately sized changing rooms, storage provision and provision of toilets.

Poor quality refers to provision with, for example, inadequate grass cover, uneven surfaces and poor drainage. For rugby, pitches will have inadequate natural drainage. In terms of ancillary facilities, poor quality refers to inappropriate changing rooms with no showers, no running water and/or old, dated interiors. If a poor quality site receives little or no usage that is not to say that no improvement is needed, it may instead be the case that it receives no demand because of its quality, thus an improvement in said quality will attract demand to the site, potentially from overplayed standard or good quality sites.

Without appropriate, fit for purpose ancillary facilities, good quality pitches may be underutilised. Changing facilities form the most essential part of this offer and therefore key sites should be given priority for improvement. Also, key sites without a suitable offer may not be able to establish or grow participation in key sport development areas with specific requirements, such as disability or women and girls' sport.

To prioritise investment into key sites it is recommended that the steering group works up a list of criteria, relevant to the Lancaster District, to provide a steer on future investment.

Addressing overplay

In order to improve the overall quality of the outdoor facility stock; it is necessary to ensure that provision is not overplayed beyond recommended carrying capacity. This is determined by assessing quality (via a non-technical site assessment) and allocating a match limit to each (daily for hockey, weekly for football and rugby union and seasonal for cricket), as shown in the preceding Assessment Report.

The FA, RFU, RFL, ECB and EH all recommend a number of matches that their respective pitches should take based on quality, as seen in the table below. For other grass pitch sports, no guidelines are set by the NGBs although it can be assumed that a similar trend should be followed.

LANCASTER PLAYING PITCH & OUTDOOR SPORTS STRATEGY STRATEGY & ACTION PLAN

Table 5.3: Carrying capacity of pitches

Sport	Pitch type	No. of MES for a good quality pitch	No. of MES for a standard quality pitch	No. of MES for a poor quality pitch
Football	Adult pitches	3 per week	2 per week	1 per week
Football	Youth pitches	4 per week	2 per week	1 per week
Football	Mini pitches	6 per week	4 per week	2 per week
Rugby league	Senior pitches	3 per week	2 per week	1 per week
Rugby league	Junior pitches	3 per week	2 per week	1 per week
Rugby league	Mini pitches	3 per week	2 per week	1 per week
Rugby union	Natural Inadequate (D0)	2 per week	1.5 per week	0.5 per week
Rugby union	Natural Adequate (D1)	3 per week	2 per week	1.5 per week
Rugby union	Pipe Drained (D2)	3.25 per week	2.5 per week	1.75 per week
Rugby union	Pipe and Slit Drained (D3)	3.5 per week	3 per week	2 per week
Cricket	One grass wicket	5 per season	4 per season	0 per season
Cricket	One NTP	60 per season	60 per season	0 per season
Hockey	One AGP	4 matches per day	4 matches per day	0 matches per day

For non-pitch sports, capacity is not linked to the number of matches taking place but rather the number of members (and other users) attracted to a site. For example, for tennis, a hard court is said to have capacity for 60 members if it is serviced by sports lighting, whereas a non-lit has court has capacity for 40 members (this varies for grass courts).

It is imperative to engage with clubs to ensure that sites are not played beyond their capacity. Where overplay is identified, play should be encouraged, where possible, to be transferred to alternative venues that are not operating at capacity, or quality, where possible, should be improved to increase capacity to appropriate levels. Where play is transferred, this may include transferring play to 3G pitches or to sites not currently available for community use but which may be in the future.

For cricket, an increase in NTPs could help to alleviate overplay as this allows for the transfer of junior demand from grass wickets. It also does not require any additional playing pitch space as NTPs can be installed in situ with existing squares.

For rugby union and tennis, additional sports lighting will reduce levels of overplay at club sites as it will allow clubs to spread demand across a greater number of pitches/courts or, in the case of rugby union, unmarked areas. If permanent sports lighting is not possible, portable sports lighting is an alternative.

As mentioned earlier, there are also sites that are poor quality but are not overplayed. These should not be overlooked as often poor quality sites have less demand than others but demand could increase if the quality was improved. It does, however, work both ways as potential improvements may make sites more attractive and therefore more popular, which in the long run can lead again to them becoming poor quality pitches if not properly maintained.

LANCASTER PLAYING PITCH & OUTDOOR SPORTS STRATEGY STRATEGY & ACTION PLAN

Improving changing provision

There is a need to address changing provision at some sites in the Lancaster District (these are detailed further in the Action Plan), for example, the changing provision at Lancaster City Juniors FC is poor quality with the club having aspirations to rebuild the ancillary facilities as the current facilities are within old shipping containers. As previously mentioned, without appropriate, fit for purpose ancillary facilities, good quality pitches may be underutilised, which is the case at Ryelands Park Playing Fields. Changing facilities form the most essential part of this offer and therefore key sites should be given priority for improvement.

Recommendation (e) – Adopt a tiered approach (hierarchy of provision) to the management and improvement of sites

To allow for facility developments to be programmed within a phased approach, the Council are advised to adopt a tiered approach to the management and improvement of outdoor sport sites and associated facilities. Please refer to Part 6: Action Plan for the proposed hierarchy.

Recommendation (f) – Work in partnership with stakeholders to secure funding

Partners, in collaboration with the Council, should ensure that appropriate funding is secured for improved sports provision and directed to areas of need. This should be underpinned by a robust strategy for improvement in outdoor sport provision and accompanying ancillary facilities, with the PPOSS able to be used as an evidence base for attracting investment.

To attract investment, the Council should stay informed in relation to relevant and appropriate funding pots, both in regard to what it can directly attract as well as to what clubs could attract independently (with the Council able to assist with this process). This can also be helped through the wider Steering Group signposting partners to what could be available.

In order to address the needs of the community, as well as to target priority areas and to reduce duplication of provision, there should be a co-ordinated approach to the strategic investment. In delivering this recommendation, the Council should maintain a regular dialogue with local partners as well as through the PPOSS Steering Group.

Although some investment in new provision will not be made by the Council directly, it is important that the Steering Group seeks to direct and lead a strategic and co-ordinated approach to facility development. This includes delivery from education sites, NGBs, sports clubs and the commercial sector.

Recommendation (g) – Secure developer contributions

It is important that this strategy informs future local plan policies, supplementary planning documents and the determination of planning applications by setting out the approach to securing sport and recreational facilities through new housing development.

For playing pitches, it is recommended the Council use Sport England's Playing Pitch Calculator as a tool for helping to determine the additional demand for pitches and to estimate the likely developer contribution.

LANCASTER PLAYING PITCH & OUTDOOR SPORTS STRATEGY STRATEGY & ACTION PLAN

The PPOSS should be used to help determine the likely impact of a new development on demand and the capacity of existing sites in the area, and whether there is a need for improvements to increase capacity of existing provision or if new provision is required. Where a development is located within access of existing high-quality provision, this does not necessarily mean that there is no need for further provision or improvement to existing provision, as additional demand arising from the development is likely to result in increased usage (which can result in overplay or quality deterioration).

Where it is determined that new provision is required to accompany a development, priority should be placed on providing facilities that contribute towards alleviating existing shortfalls within the locality. To determine what supply of provision is provided, it is imperative that the PPOSS findings are taken into consideration and that for particularly large developments consultation takes place with the relevant NGBs and Sport England. This is due to the importance of ensuring that the stock of facilities provided is correct to avoid provision becoming unsustainable and unused. The preference is for multi-pitch and potentially multi-sport sites to be developed, supported by a clubhouse and adequate parking facilities. This is because single-pitch facilities are more likely to become under-used (or unused), unviable and unsustainable.

It is recognised that consultation cannot take place with NGBs for every development due to resource restrictions. Instead, it is recommended that such discussions take place within PPOSS Steering Group meetings, which should take place regularly following adoption of the study as part of the ongoing monitoring and evaluation process. It is recommended that these take place every 6-12 months and inform the annual review/update (see Part 8 for further information).

The guidance should form the basis for negotiation with developers to secure contributions to include provision and/or enhancement of appropriate provision and subsequent maintenance. S106 contributions could also be used to improve the condition and of the pitches in order to increase pitch capacity to accommodate more matches.

Sport England recommends that a number of objectives should be implemented to enable the above to be delivered:

- ◀ Planning permission should include appropriate conditions and/or be subject to specific planning obligations. Where developer contributions are applicable, a S106 agreement or equivalent must be completed that should specify, when applied, the amount that will be linked to Sport England's Building Cost Information Service¹¹ from the date of the permission and timing of the contribution/s to be made.
- ◀ Contributions should also be secured towards the first ten years of maintenance on new pitches (lifecycle costs), the cost of which is indicated by the Sport England Playing Pitch Calculator. NGBs and Sport England can provide further and up to date information on the associated costs.
- ◀ External funding should be sought/secured to achieve maximum benefit from the investment into appropriate facility enhancement, alongside other open space provision, and its subsequent maintenance.
- ◀ Where new provision is provided, appropriate changing rooms and associated car parking should be located on site.
- ◀ All new or improved outdoor sports facilities on school sites should be subject to community use agreements.

For further information, please see Part 7 of this report.

¹¹<https://www.sportengland.org/guidance-and-support/facilities-and-planning/design-and-cost-guidance/facility-cost-guidance>

LANCASTER PLAYING PITCH & OUTDOOR SPORTS STRATEGY STRATEGY & ACTION PLAN

OBJECTIVE 3

To **provide** new outdoor sport provision and ancillary facilities where there is current or future demand to do so

Recommendations:

- h) Rectify quantitative shortfalls through the current facility stock.
- i) Identify opportunities to increase to the overall stock to accommodate both current and future demand.

Recommendation (h) - Identify opportunities to add to the overall stock to accommodate both current and future demand

The Steering Group should use and regularly update the Action Plan within this Strategy for improvements to the Council's own facility stock whilst recognising the need to support partners. The Action Plan lists improvements to be made to each site focused upon both qualitative and quantitative improvements as appropriate for each area.

From a quantitative position, the existing position for all sports is either that demand is being met or that there is a shortfall, whereas the future position shows the exacerbation of current shortfalls and the creation of additional shortfalls for some pitch/facility types and in some areas where demand is currently being met. On this basis there may be some opportunity for new provision to be provided to meet shortfalls albeit most of the scenarios show that quality improvements and/or improved access to sites is the preferred option. There is, however, a significant shortfall of 3G pitches which can only be met through new provision.

For new schools, there is an opportunity to combine the building of a school to the development of a new multi-sport site that will be of a benefit to a school as well as the wider community via a community use agreement.

Any new provision, whether that be at a school or as a result of housing growth, should also consider the Council's wider sporting need. This means that the focus should not solely be on outdoor sports facilities but also provision for wider recreational activity.

Recommendation (i) - Rectify quantitative shortfalls through the current stock

The Council and its partners should work to rectify identified inadequacies and meet identified shortfalls as outlined in the preceding Assessment Report and the sport-by-sport specific recommendations (Part 4) as well as the following Action Plan (Part 6).

It is important that the current levels of provision are protected, maintained and enhanced to secure provision now and in the future. Maximising use of existing facilities through a combination of the following will help to reduce shortfalls and accommodate future demand:

- ◀ Improving quality in order to improve the capacity to accommodate more demand.
- ◀ Transferring demand from overplayed sites to sites with spare capacity.
- ◀ The re-designation of facilities e.g. converting an unused facility (or facility type) for one sport to instead cater for another sport (or another pitch type).
- ◀ Securing long-term access at school sites including those currently unavailable for community use.
- ◀ Working with commercial and private providers to increase usage.

LANCASTER PLAYING PITCH & OUTDOOR SPORTS STRATEGY STRATEGY & ACTION PLAN

Unmet demand, changes in sport participation and trends and proposed housing growth should also be recognised and factored into future facility planning. Assuming that an increase in participation and housing growth occurs, it will impact on the future need for certain types of sports provision.

LANCASTER PLAYING PITCH & OUTDOOR SPORTS STRATEGY STRATEGY & ACTION PLAN

PART 6: ACTION PLAN

The site-by-site action plan seeks to address key issues identified in the preceding Assessment Report. It provides recommendations based on current levels of usage, quality and future demand, as well as the potential of each site for enhancement. It is separated by analysis area and includes information pertaining to the sub sections below.

Site hierarchy

The Council should make it a high priority to work with NGBs and other partners to comprise a priority list of actions based on local priorities, NGB priorities and available funding. As stated in Recommendation (e), to allow for facility developments to be programmed within a phased approach, the Council should adopt a tiered approach to the management and improvement of playing pitch sites and associated facilities.

The identification of sites is based on their strategic importance in a District-wide context. As such, this, for example, takes into account the level of demand accommodated and the potential impact the recommended actions will have on addressing the identified shortfalls/issues. The proposed site-hierarchy is summarised in the following table.

Table 6.1: Tiered site criteria

Criteria	Hub sites	Key centres	Local sites
Site location	Strategically located in the District. Priority sites for NGBs.	Strategically located within the analysis area.	Serves the local community.
Site layout	Accommodates three or more grass pitches, generally including provision of an AGP (or with the potential).	Accommodates two or more grass pitches.	Accommodates one or two pitches.
Type of sport	Multi-sport provision. Could also operate as a central venue.	Single or multi-sport provision.	Generally single sport provision but may cater for more at a basic level.
Management	Management control allows for wide community use, i.e., through the local authority, a leisure operator or a school/college/university with a community use agreement.	Management control generally allows for wide community use but may include sites that are owned or leased by clubs/other organisations.	Management control can be via the local authority, schools, clubs and other providers.
Maintenance regime	Maintenance regime aligns or could align with NGB guidelines.	Maintenance regime aligns or could align with NGB guidelines.	Standard maintenance regime or an in-house maintenance contract.
Ancillary facilities	Good quality ancillary facilities on site (or potential), with sufficient changing rooms and car parking to serve the number of pitches; may include wider social/function facilities.	Good quality ancillary facility on site (or potential), with sufficient changing rooms and car parking to serve the number of pitches.	Limited or no changing room access on site.

LANCASTER PLAYING PITCH & OUTDOOR SPORTS STRATEGY STRATEGY & ACTION PLAN

Hub sites are of District-wide importance where users are willing to travel to access the range and high quality of facilities offered and are likely to be multi-sport. Actions at these sites are likely to have a greater impact on addressing the issues identified in the PPOSS.

Key centres are more community focused, although some are still likely to service a wider analysis area. However, there may be more of a focus on a specific sport i.e., a dedicated site.

It is considered that some financial investment may be necessary to improve the facilities at both hub sites and key sites. This could be to improve the provision, create additional provision (e.g., a 3G pitch) or to enhance the ancillary facilities in terms of access, flexibility (i.e., single-sex changing if necessary) and quality as well as ensuring that they meet the rules and regulations of local competitions.

Local sites refer to those sites offering minimal provision or that are of minimal value to the wider community. Primarily they are sites with one pitch/facility or a low number of pitches/facilities that service just one or two sports.

For local authority local sites, consideration should be given, on a site-by-site basis, to the feasibility of a club taking on a long-term lease, in order that external funding can be sought. Such sites will require some level of investment, either to the outdoor sport facilities or ancillary facilities, and is it anticipated that one of the conditions of offering a hire/lease is that a club would be in a position to source external funding to improve/extend the provision.

Other sites considered in this tier may be primary school sites or secondary school sites that are not widely used by the community or that do not offer community availability.

Partners

The column indicating partners refers to the main organisations that the Council would look to work with to support delivery of the actions.

Given the extent of potential actions, it is reasonable to assume that partners will not necessarily be able to support all the actions identified but where the action is a priority and resource is available the partner will endeavour to assist.

As all sites sit within the local authority area, the Council is considered to be a partner for each identified action (as the column indicates partners for the Council) and is therefore not included. However, it is acknowledged that it will take on more of a leading role for some specific sites and some specific actions (e.g., at council-operated venues).

Priority

Although hub sites are most likely to have a **high** priority actions, as they have wider importance, these have been identified on the basis of the impact that the site will have on addressing the key issues identified in the assessment. Therefore, some key centres and local sites are on occasion also identified as having a high priority level. It is these projects/sites which should generally, if possible, be addressed within the short term (1-2 years).

The majority of key centres have **medium** priority actions. These have analysis area importance and are identified on the basis of the impact that they will have on addressing the issues identified in the assessment, although not to the same extent as high priority actions.

LANCASTER PLAYING PITCH & OUTDOOR SPORTS STRATEGY STRATEGY & ACTION PLAN

The **low** priority actions tend to be for single pitch or single sport sites and often club or education sites with local specific importance but that may also contribute to addressing the issues identified for specific users. Whilst low priority, there may be opportunities to action some of the recommendations made against such sites relatively quickly e.g., through S106 funding.

Costs

The strategic actions have also been ranked as low, medium or high based on cost. The brackets are:

- (L) - Low - less than £150k
- (M) - Medium - £150k-£750k
- (H) - High £750k and above

These are based on Sport England's estimated facility costs which can be found at: <https://www.sportengland.org/guidance-and-support/facilities-and-planning/design-and-cost-guidance/facility-cost-guidance>

Timescales

The Action Plan has been created to be delivered over a ten-year period and the information within the Assessment Report, Strategy and Action Plan will require updating as developments occur. The indicative timescales relate to delivery times and are not priority based:

- (S) - Short (1-2 years)
- (M) - Medium (3-5 years)
- (L) - Long (6+ years)

Aim

Each action seeks to meet at least one of the three Sport England aims of the Strategy; **Enhance, Provide, Protect.**

LANCASTER PLAYING PITCH & OUTDOOR SPORTS STRATEGY STRATEGY & ACTION PLAN

CARNFORTH / RURAL ANALYSIS AREA

Area summary – pitch sports

Sport	Area	Pitch type	Current capacity total in MES ^[1]	Future capacity total in MES (2031)
Football (grass)	Carnforth / Rural	Adult	Spare capacity of 3.5	Spare capacity of 3.5
Football (grass)	Carnforth / Rural	Youth 11v11	Shortfall of 2	Shortfall of 2
Football (grass)	Carnforth / Rural	Youth 9v9	At capacity	At capacity
Football (grass)	Carnforth / Rural	Mini 7v7	At capacity	At capacity
Football (grass)	Carnforth / Rural	Mini 5v5	Spare capacity of 1	Spare capacity of 0.5
Football (grass)	District-wide	Adult	Spare capacity of 8	Spare capacity of 7.5
Football (grass)	District-wide	Youth 11v11	Shortfall of 5	Shortfall of 5.5
Football (grass)	District-wide	Youth 9v9	Spare capacity of 1.5	Spare capacity of 1
Football (grass)	District-wide	Mini 7v7	Spare capacity of 0.5	At capacity
Football (grass)	District-wide	Mini 5v5	Spare capacity of 1	Spare capacity of 0.5
Football (3G pitches)	Carnforth / Rural	Full size, with sports lighting	Shortfall of 2	Shortfall of 2
Football (3G pitches)	District-wide	Full size, with sports lighting	Shortfall of 4	Shortfall of 4
Cricket	Carnforth / Rural	Senior (Saturday)	Spare capacity of 17	Future capacity based on a District-wide basis
Cricket	Carnforth / Rural	Senior (Sunday)	Spare capacity of 17	Future capacity based on a District-wide basis
Cricket	Carnforth / Rural	Junior (Midweek)	Spare capacity of 17	Future capacity based on a District-wide basis
Cricket	District-wide	Senior (Saturday)	Spare capacity of 9	Shortfall of 3
Cricket	District-wide	Senior (Sunday)	Spare capacity of 21	Spare capacity of 9
Cricket	District-wide	Junior (Midweek)	Spare capacity of 25	Spare capacity of 21
Rugby union	Carnforth / Rural	Senior	No demand	No demand
Rugby union	District-wide	Senior	Shortfall of 12.25	Shortfall of 12.25

^[1] MES – match equivalent sessions per week (per season for cricket)

LANCASTER PLAYING PITCH & OUTDOOR SPORTS STRATEGY STRATEGY & ACTION PLAN

Sport	Area	Pitch type	Current capacity total in MES ^[1]	Future capacity total in MES (2031)
Rugby league	District-wide	Senior	Shortfall of 4.5	Shortfall of 5 ¹²
Hockey (sand AGPs)	District-wide	Full size, with sports lighting	Sufficient supply but poor quality is a significant issue	Sufficient supply but poor quality is a significant issue

Area summary – non-pitch sports

Sport	Headline findings
Tennis	For club-based tennis, there is considered to be sufficient provision to meet demand. For non-club courts, whilst no courts are identified as having any capacity issues, it cannot be said that supply is sufficient to meet demand due to the large amount of unmet and latent demand evidenced both nationally and in the Lancaster District.
Athletics	Supply is considered sufficient to meet demand, with only two track and field clubs currently based in the District.
Bowls	Five clubs are operating at or above recommended capacity levels and therefore need to be monitored to ensure that supply remains adequate. In general, future demand expressed can be accommodated on existing greens.
Cycling	It is considered that there is sufficient closed road cycling facilities in the District with the Salt Ayre Leisure Centre facility servicing multiple clubs in the Lancaster District.
Golf	With six golf facilities in the Lancaster District and a mix of 18-hole and 9-hole courses, supply is well placed to meet demand. Notwithstanding the above, there may be a gap in demand for a par three golf facility within the Lancaster District.
Other sports	Supply of facilities for lacrosse and American football can sufficiently cater for current levels of demand on either artificial or natural turf pitches.

¹² If future demand is realised and the Club were not to relocate from Vale of Lune RUFC the overplay on the current pitch would be five MES per week.

LANCASTER PLAYING PITCH & OUTDOOR SPORTS STRATEGY STRATEGY & ACTION PLAN

Site ID	Site	Active places ID	Postcode	Sport	Management	Current status	Recommended actions	Partners	Site hierarchy tier	Priority	Timescales	Cost	Aim
3	Arkholme Village Hall	30010423	LA6 1AS	Football	Community organisation	One standard quality adult pitch with actual spare capacity of one match equivalent session.	Sustain pitch quality with appropriate maintenance. Explore the opportunity to reconfigure to youth 11v11 pitch to support shortfalls. Support transfer of youth demand to for Halton Juniors from Low Road Playing Fields.	Community organisation FF LFA	Local	L	S	L	Protect
4	Ashton Golf Centre	1200163	LA2 0AJ	Golf	Municipal	A nine hole municipal golf course.	Ensure quality is appropriate for levels of demand accessing the site. Retain as current use.	Municipal EG	Local	L	L	L	Protect
9	Bolton Le Sands Playing Fields	6005033	LA5 8DW	Football	Parish council	One standard quality adult pitch with actual spare capacity of one match equivalent session.	Sustain pitch quality with appropriate maintenance. Utilise spare capacity to accommodate future demand / alleviate shortfalls.	Parish council FF LFA	Local	L	S	L	Protect
9	Bolton Le Sands Playing Fields	6005033	LA5 8DW	Tennis	Parish council	Two poor quality macadam courts available for community use. Club aspires to add sports lighting to courts onsite.	Look to improve court quality, accessibility, and utilisation to actualise potential demand. Explore the opportunity to develop sports lighting onsite.	Parish council LTA	Local	M	M	L-M	Protect Enhance
9	Bolton Le Sands Playing Fields	6005033	LA5 8DW	Bowls	Parish council	Two good quality crown greens that have sports lighting. Used by Bolton Le Sands BC which has 82 members.	Sustain green quality with appropriate maintenance.	Parish council BCGBA	Local	L	L	L	Protect
11	Bolton-Le-Sands Cricket Club	1041184	LA5 8DH	Cricket	Sports club	One standard quality square with eight wickets that has capacity to accommodate more demand. Accompanied by poor quality practice provision.	Sustain square quality with appropriate maintenance. Utilise spare capacity to accommodate future demand / alleviate shortfalls. Explore options to refurbish practice provision.	Sports club ECB LCB	Local	L	S	L	Protect Enhance
14	Capernwray Hall	1014758	LA6 1AG	Football	Private	Previously accommodated a youth 11v11 pitch but now disused.	Retain as strategic reserve if an increase in demand warrants reinstating the provision. Ensure any permanent loss of provision meets national planning policy requirements.	Council FF LFA	Local	L	L	L	Protect
14	Capernwray Hall	1014758	LA6 1AG	Tennis	Private	Two standard quality macadam courts that are available for community use but are not sports lit.	Look to improve court quality, accessibility, and utilisation to actualise potential demand.	Council LTA	Local	M	M	L-M	Protect Enhance
16	Carnforth Cricket Club	1208320	LA5 9EA	Cricket	Sports club	One good quality square with 12 wickets accompanied by an NTP. Square is overplayed by 19 match equivalent sessions a season. Accompanied by poor quality practice provision.	Sustain square quality with appropriate maintenance. Greater utilise onsite NTP to alleviate overplay. Explore the potential to transfer demand to a site with spare capacity to alleviate shortfalls. Explore the potential to install hybrid wickets to alleviate shortfalls. Look at the potential to refurbish practice provision.	Sports club ECB LCB	Local	M	S	L-M	Protect Enhance

LANCASTER PLAYING PITCH & OUTDOOR SPORTS STRATEGY STRATEGY & ACTION PLAN

Site ID	Site	Active places ID	Postcode	Sport	Management	Current status	Recommended actions	Partners	Site hierarchy tier	Priority	Timescales	Cost	Aim
17	Carnforth High School	1201486	LA5 9LS	Football/ 3G	Education	One standard quality adult pitch overplayed by one match equivalent session, two good quality youth 11v11 pitches and two standard quality youth 9v9 pitches all of which are played to capacity at peak time. Site is receiving GPMF (Carnforth Rangers FC). Site is identified in the LFFP for a potential 3G development.	Utilise GPMF to improve pitch quality through enhanced maintenance. Explore the opportunity to develop 11v11 size 3G pitch onsite.	Education FF LFA	Key centre (Potential Hub site)	H	S-M	H	Protect Enhance Provide
17	Carnforth High School	1201486	LA5 9LS	Rugby union	Education	Site previously accommodated two senior pitches.	Look to reinstate provision if demand warrants.	Education RFU	Key centre	L	L	L	Protect
17	Carnforth High School	1201486	LA5 9LS	Hockey / Tennis	Education	One small size poor quality hockey suitable AGP built in 2007. Provision previously had tennis marked on it, however, this no longer occurs. Available for community use and is sports lit. Not currently utilised for hockey.	Maintain current quality for curricular use. Explore the site feasibility for a 3G pitch, with potential to utilise part pitch as infrastructure for 3G pitch onsite.	Education EH LTA	Key centre	L	S	M	Protect Enhance
19	Caton Sports Field	6004696	LA2 9QS	Football	Community organisation	One standard quality adult pitch with actual spare capacity of 0.5 match equivalent sessions. Accompanied by standard quality ancillary provision which are identified in the LFFP for improvements.	Sustain pitch quality with appropriate maintenance. Explore options for improvements to ancillary provision.	Community organisation FF LFA	Local	M	S-M	L-M	Protect Enhance
24	Claughton Brickworks	30004756	LA2 9JY	Football	Sports club	One poor quality mini 5v5 pitch played to capacity at peak time and one poor quality youth 11v11 pitch which is overplayed by one match equivalent session. Accompanied by poor quality ancillary provision.	Improve pitch quality with enhanced levels of maintenance. Explore options to improve poor quality ancillary provision.	Sports club FF LFA	Local	M	S-M	L-M	Protect Enhance
25	Cockerham Bowling Club	N/A	LA2 0EF	Bowls	Sports club	One good quality crown green with sports lights used by Cockerham BC.	Sustain green quality with appropriate maintenance.	Sports club BCGBA	Local	L	L	L	Protect
26	Cockerham Playing Fields	1040859	LA2 0EF	Football	Community organisation	Two mini 5v5 and one mini 7v7 all of which are poor quality. Pitches are played to capacity at peak time.	Improve pitch quality with enhanced levels of maintenance.	Community organisation FF, LFA	Local	L	S	L	Protect Enhance
28	Dolphinholme Village Hall	N/A	LA2 9BU	Tennis	Parish council	One poor quality macadam court that is available for community use but not sports lit.	Look to improve court quality, accessibility, and utilisation to actualise potential demand.	Parish council LTA	Local	M	M	L-M	Protect Enhance
28	Dolphinholme Village Hall	N/A	LA2 9BU	Bowls	Sports club	One good quality crown green used by Dolphinholme BC which has plans for a new pavilion.	Sustain green quality with appropriate maintenance. Assist the Club where possible with its plans for a new pavilion.	Sports club BCGBA	Local	M	S	L-M	Protect Enhance Provide
32	Galgate Recreation Field	1069707	LA2 0LQ	Football	Parish council	One adult and one youth 11v11 pitch both of which are standard quality. The former has actual spare capacity of one match equivalent session whereas the latter pitch is played to capacity. Pitches onsite are reported to have poor grass coverage. Identified in the LFFP for pitch enhancements.	Keep on the LFFP and look to improve pitch quality with enhanced levels of maintenance.	Parish council FF LFA	Local	M	S	L-M	Protect Enhance

LANCASTER PLAYING PITCH & OUTDOOR SPORTS STRATEGY STRATEGY & ACTION PLAN

Site ID	Site	Active places ID	Postcode	Sport	Management	Current status	Recommended actions	Partners	Site hierarchy tier	Priority	Timescales	Cost	Aim
32	Galgate Recreation Field	1069707	LA2 0LQ	Cricket	Parish council	One standard quality square with eight wickets accompanied by an NTP. Square has capacity to accommodate more demand.	Sustain square quality with appropriate levels of maintenance. Utilise spare capacity to accommodate future demand / alleviate shortfalls.	Parish council ECB LCB	Local	L	S	L	Protect
32	Galgate Recreation Field	1069707	LA2 0LQ	Bowls	Parish council	One good quality crown green used by Galgate BC. Green is marginally overplayed and is sports lit.	Sustain green quality with appropriate levels of maintenance.	Parish council BCGBA	Local	L	L	L	Protect
35	Hest Bank Recreation Ground	1069709	LA2 6JB	Football (Disused)	Parish Council	Hest Bank Recreation Ground (Carnforth/Rural Area) previously had one youth 9v9 pitch marked out. Both sets of goal posts are still installed; however, the pitch is not currently marked for formal football. New MUGA on the site.	Retain as strategic reserve if an increase in demand warrants reinstating the provision. Ensure any permanent loss of provision meets national planning policy requirements.	Council FF LFA	Local	L	L	L	Protect
37	Heysham Golf Club	1101601	LA3 3JH	Golf	Members	An 18 hole members golf course accompanied by a driving range.	Ensure quality is appropriate for levels of demand accessing the site. Retain as current use.	Members EG	Local	L	L	L	Protect
41	Hornby Bowling Club	N/A	LA2 8JY	Bowls	Sports club	One good quality crown green used by Hornby BC.	Sustain green quality with appropriate levels of maintenance.	Sports club BCGBA	Local	L	L	L	Protect
44	Iodine Park, Millhead	1041419	LA5 9HD	Football	Sports club	One poor quality adult pitch overplayed by 1.5 match equivalent sessions. Accompanied by poor quality ancillary provision.	Improve pitch quality with enhanced levels of maintenance. Explore options for improve ancillary provision.	Sports club	Local	L	S	L	Protect Enhance
53	Lancaster Golf Club	1101602	LA2 0AJ	Golf	Members	An 18 hole members golf course accompanied by a driving range.	Ensure quality is appropriate for levels of demand accessing the site. Retain as current use.	Members EG	Local	L	L	L	Protect
61	Leck St Peters Church of England Primary School	6012651	LA6 2JD	Football	Education	One poor quality mini 5v5 pitch that is unavailable for community use.	Improve pitch quality as required to support curricular and extracurricular demand.	Education FF LFA	Local	L	S	L	Protect Enhance
62	Low Road Playing Fields	6004256	LA2 6NB	Football	Community organisation	One standard quality youth 11v11 pitch overmarked by a youth 9v9, mini 7v7 and mini 5v5 pitch. The site is overplayed by 3.5 match equivalent sessions. Site is receiving GPMF (Halton JFC). Issue with ball strike on this site.	Continue to use GPMF to improve pitch quality. Explore opportunity for ball stop fencing to be installed to increase safety and security of site. Support transfer of youth demand to Arkholme Village Hall for Halton Juniors and then reconfigure site to accommodate dedicated mini football pitches for the Club.	Community organisation FF LFA	Local	M	S	L	Protect Enhance
63	Lunesdale Lawn Tennis Club	30007267	LA2 9QN	Tennis	Sports club	Three grass and two artificial turf courts all of which are standard quality. The latter have sports lightning. Lunesdale TC indicates its artificial courts are coming to the end of their expected lifespan.	Improve artificial court quality through a resurfacing when required. Sustain grass court quality as required with relevant maintenance.	Sports club LTA	Local	M	M	M	Protect Enhance

LANCASTER PLAYING PITCH & OUTDOOR SPORTS STRATEGY STRATEGY & ACTION PLAN

Site ID	Site	Active places ID	Postcode	Sport	Management	Current status	Recommended actions	Partners	Site hierarchy tier	Priority	Timescales	Cost	Aim
65	Middleton Park	30003139	LA3 3LG	Football	Parish council	One standard quality adult pitch and one good quality youth 11v11 pitch with each with one match equivalent session of spare capacity. Site is receiving GMPF (Middleton & Overton Sports FC). The Club has submitted a planning application to extend its clubhouse.	Continue to use GPMF to improve and sustain pitch quality. Assist the Club where possible with its ancillary facility plans.	Parish council FF LFA	Local	M	S-M	M	Protect Enhance
75	Nether Kellet Village Field	30010168	LA6 1EY	Football	Parish council	One standard quality mini 7v7 pitch that is played to capacity at peak time.	Sustain pitch quality with appropriate levels of maintenance.	Parish council FF, LFA	Local	L	L	L	Protect
76	Oneschool Global Uk (Lancaster Campus)	1069710	LA2 8LH	Football	Education	One youth 9v9 and one mini 7v7 both of which are standard quality. Spare capacity discounted due to unsecure tenure.	Sustain pitch quality with appropriate levels of maintenance. Explore opportunity to secure access for community clubs.	Education FF LFA	Local	L	L	L	Protect
79	Overton St Helens C of E Primary School	6012953	LA3 3EZ	Football	Education	One poor quality mini 7v7 pitch that is played to capacity at peak time.	Sustain pitch quality as appropriate to meet curricular and extracurricular demand.	Education FF, LFA	Local	L	L	L	Protect
81	Pine Lake Resort	1002958	LA6 1JZ	Tennis	Private	One standard quality macadam court that is available for community use but not sports lit.	Sustain court quality with appropriate maintenance.	Private LTA	Local	L	L	L	Protect
82	Quarry Park (Carnforth Rangers FC)	6021560	LA5 9NB	Football	Sports club	One good quality adult pitch with actual spare capacity of 0.5 match equivalent sessions. Site is accompanied by poor quality ancillary provision and is identified for improving in the LFFP. Due to ongoing development pressures at Lundsfield Quarry, the Club aspires to relocate from its site to a new playing field site within the Area. The Club also aspires to progress through Step football.	Sustain pitch quality with appropriate maintenance. Examine the potential for relocation. If the Club is to remain explore options to improve ancillary provision and make the ground suitable for relevant Step football. Explore the opportunity to relocate the Club off the site to new playing field site.	Sports club FF LFA SE Council	Local	H	S	M-H	Protect Provide Enhance
84	Quernmore Recreation Club	N/A	LA2 9EF	Tennis	Parish council	One good quality artificial turf court that is sports lit and available for community use.	Sustain court quality with appropriate maintenance.	Parish council LTA	Local	L	L	L	Protect
84	Quernmore Recreation Club	N/A	LA2 9EF	Bowls	Sports club	One good quality crown green with sports lighting used by Burrowbeck BC and Quernmore BC.	Sustain green quality with appropriate maintenance.	Sports club BCGBA	Local	L	L	L	Protect
91	Silverdale Bowling Club	N/A	LA5 0RT	Bowls	Sports club	One good quality crown green used by Silverdale BC. The Club is rectifying vandalism issues.	Sustain green quality with appropriate maintenance. Assist the Club in improving ancillary provision.	Sports club BCGBA	Local	L	L	L	Protect
92	Silverdale Cricket Club	1069713	LA5 0SH	Cricket	Sports club	One standard quality square with eight wickets. No capacity for additional demand. The Club aspires to develop women's changing rooms.	Sustain square quality with appropriate maintenance. Assist the Club where possible to develop dedicated women's changing rooms.	Sports club ECB LCB	Local	L	L	L-M	Protect Enhance
93	Silverdale Golf Club	1101120	LA5 0SP	Golf	Members	An 18 hole members golf course.	Ensure quality is appropriate for levels of demand accessing the site. Retain as current use.	Members EG	Local	L	L	L	Protect

LANCASTER PLAYING PITCH & OUTDOOR SPORTS STRATEGY STRATEGY & ACTION PLAN

Site ID	Site	Active places ID	Postcode	Sport	Management	Current status	Recommended actions	Partners	Site hierarchy tier	Priority	Timescales	Cost	Aim
97	Slyne With Hest Football Club	1069714	LA2 6BG	Football	Sports club	One good quality adult pitch with actual spare capacity of one match equivalent session and one standard quality youth 11v11 pitch with actual spare capacity of 0.5 match equivalent session. Slyne-with-Hest FC recently submitted a planning application for the extension of its clubhouse; however, this was rejected because the land is in the greenbelt.	Sustain pitch quality with appropriate levels of maintenance. Ensure the site meets relevant requirements to allow the Club to progress through the National League System. Explore options to assist the Club in its ancillary facility plans.	Sports club FF LFA	Local	M	S	M	Protect Enhance
103	Taps on the Green (bowls)	N/A	LA5 9LR	Bowls	Private	One standard quality sports lit crown green used by Carnforth BC.	Improve green quality with enhanced levels maintenance.	Private BCGBA	Local	L	S	L	Protect Enhance
105	The Bay Horse Inn (bowls)	N/A	LA6 1AS	Bowls (Disused)	Private	One disused crown green.	Retain as strategic reserve if an increase in demand warrants reinstating the provision. Ensure any permanent loss of provision meets national planning policy requirements.	Private BCGBA	Local	L	L	L	Protect
107	The Station Hotel (bowls)	N/A	LA2 9QT	Bowls (Disused)	Private	One disused crown green.	Retain as strategic reserve if an increase in demand warrants reinstating the provision. Ensure any permanent loss of provision meets national planning policy requirements.	Private BCGBA	Local	L	L	L	Protect
114	Warton & District Bowling Club	N/A	LA5 9QH	Bowls	Sports club	One good quality crown green used by Warton & District BC.	Sustain green quality with appropriate levels of maintenance.	Sports club BCGBA	Local	L	L	L	Protect
115	Warton Cricket Club	1208400	LA5 9QJ	Cricket	Sports club	One good quality square with 11 wickets accompanied by an NTP. Square has capacity to accommodate further demand. Accompanied by poor quality practice provision.	Sustain square quality with appropriate levels of maintenance. Utilise spare capacity to alleviate shortfalls / actualise future demand. Explore options to refurbish poor quality practice provision.;	Sports club ECB LCB	Local	L	S	L	Protect Enhance
116	Wennington Hall School	1203421	LA2 8NS	Football	Education / Private	One youth 11v11 and one mini 5v5 pitch both of which are standard quality and each have one match equivalent session of spare capacity, Wennington Hall School has recently had a planning application for the change of use on the site from a school to a hotel accepted. As part of this development a community use agreement has been drawn up to allow access to two grass football pitches (one youth 11v11 and one mini 5v5). In addition, there will be installation of a two changing room and storage sheds.	Sustain pitch quality with appropriate levels of maintenance. Ensure the pitches are secured via a community use agreement in addition to the development of ancillary provision.	Education FF LFA	Local	H	S-L	M	Protect Provide
119	Wilson's Endowed C of E Primary School	6012887	LA6 1BN	Football	Education	One poor quality mini 5v5 pitch that is not available for community use.	Improve pitch quality as required to meet curricular and extracurricular demand.	Education FF, LFA	Local	L	S	L	Protect Enhance

LANCASTER PLAYING PITCH & OUTDOOR SPORTS STRATEGY STRATEGY & ACTION PLAN

Site ID	Site	Active places ID	Postcode	Sport	Management	Current status	Recommended actions	Partners	Site hierarchy tier	Priority	Timescales	Cost	Aim
121	Yealand Church of England Primary School	6012728	LA5 9SU	Tennis	Education	One poor quality macadam court that is not sports lit nor available for community use.	Improve courts quality as required to meet curricular and extracurricular demand.	Education LTA	Local	L	S	L	Protect Enhance
124	Dolphinholme Village Hall	N/A	LA2 9AJ	Tennis	Parish council	One poor quality macadam court that is available for community use but not sports lit.	Improve courts quality as required based on levels of demand.	Parish council LTA	Local	L	S	L	Protect Enhance
124	Dolphinholme Village Hall	N/A	LA2 9AJ	Bowls	Parish council	One good quality sports lit crown green used by Dolphinholme BC. The Club has plans for a new pavilion.	Sustain green quality with appropriate levels of maintenance. Assist the Club in its plans for a new pavilion where possible.	Sports club BCGBA	Local	M	M	L	Protect Provide
126	Quernmore Recreation	N/A	LA2 9EF	Tennis	Parish council	One good quality artificial turf court that is available for community use and is sports lit.	Sustain court quality with appropriate maintenance.	Parish council LTA	Local	L	L	L	Protect
126	Quernmore Recreation	N/A	LA2 9EF	Bowls	Parish council	One good quality sports lit crown green used by Quernmore BC and Burrowbeck BC	Sustain green quality with appropriate levels of maintenance.	Sports club BCGBA	Local	L	L	L	Protect
127	Millhead Recreation Ground	N/A	LA5 9HD	Bowls	Sports club	One poor quality crown green used by Millhead Crown BC.	Improve green quality with enhanced levels of maintenance.	Sports club BCGBA	Local	L	S	L	Protect Enhance
132	Warton & District Bowling Club	N/A	LA5 9QH	Bowls	Sports club	One good quality crown green used by Warton & District BC. Green has sports lights.	Sustain green quality with appropriate levels of maintenance.	Sports club BCGBA	Local	L	L	L	Protect
134	Silverdale Bowling Club	N/A	LA5 0SQ	Bowls	Sports club	One good quality crown green used by Silverdale BC.	Sustain green quality with appropriate levels of maintenance.	Sports club BCGBA	Local	L	L	L	Protect
135	Cockerham Bowling Club	N/A	LA2 0EF	Bowls	Sports club	One good quality crown green used by Cockerham BC. Green has sports lights.	Sustain green quality with appropriate levels of maintenance.	Sports club BCGBA	Local	L	L	L	Protect
136	Ship Hotel	N/A	LA3 3HD	Bowls	Parish council	One good quality crown green used by Overton BC.	Sustain green quality with appropriate levels of maintenance.	Parish council BCGBA	Local	L	L	L	Protect

LANCASTER PLAYING PITCH & OUTDOOR SPORTS STRATEGY STRATEGY & ACTION PLAN

HEYSHAM AND MORECAMBE ANALYSIS AREA

Area summary – pitch sports

Sport	Area	Pitch type	Current capacity total in MES ^[1]	Future capacity total in MES (2031)
Football (grass)	Heysham and Morecambe	Adult	Spare capacity of 0.5	Spare capacity of 0.5
Football (grass)	Heysham and Morecambe	Youth 11v11	Shortfall of 2	Shortfall of 2.5
Football (grass)	Heysham and Morecambe	Youth 9v9	At capacity	Shortfall of 0.5
Football (grass)	Heysham and Morecambe	Mini 7v7	Spare capacity of 0.5	At capacity
Football (grass)	Heysham and Morecambe	Mini 5v5	At capacity	At capacity
Football (grass)	District-wide	Adult	Spare capacity of 8	Spare capacity of 7.5
Football (grass)	District-wide	Youth 11v11	Shortfall of 5	Shortfall of 5.5
Football (grass)	District-wide	Youth 9v9	Spare capacity of 1.5	Spare capacity of 1
Football (grass)	District-wide	Mini 7v7	Spare capacity of 0.5	At capacity
Football (grass)	District-wide	Mini 5v5	Spare capacity of 1	Spare capacity of 0.5
Football (3G pitches)	Heysham and Morecambe	Full size, with sports lighting	Sufficient supply	Sufficient supply
Football (3G pitches)	District-wide	Full size, with sports lighting	Shortfall of 4	Shortfall of 4
Cricket	Heysham and Morecambe	Senior (Saturday)	Shortfall of 10	Future capacity based on a District-wide basis
Cricket	Heysham and Morecambe	Senior (Sunday)	Shortfall of 10	Future capacity based on a District-wide basis
Cricket	Heysham and Morecambe	Junior (Midweek)	Shortfall of 10	Future capacity based on a District-wide basis
Cricket	District-wide	Senior (Saturday)	Spare capacity of 9	Shortfall of 3
Cricket	District-wide	Senior (Sunday)	Spare capacity of 21	Spare capacity of 9
Cricket	District-wide	Junior (Midweek)	Spare capacity of 25	Spare capacity of 21
Rugby union	Heysham and Morecambe	Senior	No demand	No demand
Rugby union	District-wide	Senior	Shortfall of 12.25	Shortfall of 12.25

^[1] MES – match equivalent sessions per week (per season for cricket)

LANCASTER PLAYING PITCH & OUTDOOR SPORTS STRATEGY STRATEGY & ACTION PLAN

Sport	Area	Pitch type	Current capacity total in MES ^[1]	Future capacity total in MES (2031)
Rugby league	District-wide	Senior	Shortfall of 4.5	Shortfall of 5 ¹³
Hockey (sand AGPs)	District-wide	Full size, with sports lighting	Sufficient supply but poor quality is a significant issue	Sufficient supply but poor quality is a significant issue

Area summary – non-pitch sports

Sport	Headline findings
Tennis	For club-based tennis, there is considered to be sufficient provision to meet demand. For non-club courts, whilst no courts are identified as having any capacity issues, it cannot be said that supply is sufficient to meet demand due to the large amount of unmet and latent demand evidenced both nationally and in the Lancaster District.
Athletics	Supply is considered sufficient to meet demand, with only two track and field clubs currently based in the District.
Bowls	Five clubs are operating at or above recommended capacity levels and therefore need to be monitored to ensure that supply remains adequate. In general, future demand expressed can be accommodated on existing greens.
Cycling	It is considered that there is sufficient closed road cycling facilities in the District with the Salt Ayre Leisure Centre facility servicing multiple clubs in the Lancaster District.
Golf	With six golf facilities in the Lancaster District and a mix of 18-hole and 9-hole courses, supply is well placed to meet demand. Notwithstanding the above, there may be a gap in demand for a par three golf facility within the Lancaster District.
Other sports	Supply of facilities for lacrosse and American football can sufficiently cater for current levels of demand on either artificial or natural turf pitches.

¹³ If future demand is realised and the Club were not to relocate from Vale of Lune RUFC the overplay on the current pitch would be five MES per week.

LANCASTER PLAYING PITCH & OUTDOOR SPORTS STRATEGY STRATEGY & ACTION PLAN

Site ID	Site	Active places ID	Postcode	Sport	Management	Current status	Recommended actions	Partners	Site hierarchy tier	Priority	Timescales	Cost	Aim
5	Bare Village Club	N/A	LA4 6DF	Bowls	Sports club	Two good quality crown greens both of which are sports lit.	Sustain green quality with appropriate maintenance.	Sports club BCGBA	Local	L	L	L	Protect
6	Barrows Lane Football Pitch	1069702	LA3 2RL	Football	Council	One poor quality youth 11v11 pitch which is overplayed by one match equivalent session.	Improve pitch quality with enhanced levels of maintenance.	Council FF, LFA	Local	L	S	L	Protect Enhance
8	Bay Leadership Academy	1201519	LA3 1AB	Football	Education	Two youth 11v11 and two youth 9v9 pitches all of which are good quality. Spare capacity discounted due to unsecure tenure. Planning permission for fencing to protect the site has recently been granted (23/00671/FUL).	Sustain pitch quality with appropriate levels of maintenance. Explore options to increase secure community access. Ensure fencing to secure the site is installed.	Education FF LFA	Key centre	M	S	L	Protect
8	Bay Leadership Academy	1201519	LA3 1AB	3G	Education	One standard quality full size sports lit 3G pitch last refurbished in 2016. Pitch is on the FA register.	Sustain quality with appropriate maintenance. Ensure there is a sinking fund in place for eventual refurbishment. Ensure pitch is retested when required to remain on the FA register.	Education FF LFA	Key centre	L	L	L	Protect
8	Bay Leadership Academy	1201519	LA3 1AB	Cricket (Disused)	Education	A disused NTP.	Look to reinstate provision if demand warrants.	Education ECB, LCB	Key centre	L	L	L	Protect
8	Bay Leadership Academy	1201519	LA3 1AB	Rugby union	Education	Site previously accommodated two senior pitches.	Look to reinstate provision if demand warrants.	Education RFU	Key centre	L	L	L	Protect
8	Bay Leadership Academy	1201519	LA3 1AB	Tennis	Education	Five standard quality macadam courts that are not sports lit nor available for community use.	Sustain court quality as appropriate to meet levels of curricular and extracurricular demand.	Education LTA	Key centre	L	M	L	Protect
34	Happy Mount Park	N/A	LA4 6AQ	Tennis	Council	One standard quality community available macadam court which is not sports lit.	Look to improve court quality, accessibility, and utilisation to actualise potential demand. Explore option to add gated access.	Council LTA	Local	M	S	L-M	Protect Enhance
34	Happy Mount Park	N/A	LA4 6AQ	Bowls	Council	One good quality crown green used by Jubilee BC which has 19 members. Green is sports lit.	Sustain green quality with appropriate maintenance.	Council BCGBA	Local	L	L	L	Protect
36	Heysham Cricket Club	1208364	LA3 2RL	Cricket	Sports club	One standard quality square with nine wickets accompanied by an NTP. Square is overplayed by five match equivalent sessions a season.	Improve square quality with enhanced levels of maintenance to alleviate overplay.	Sports club ECB LCB	Local	M	S	L	Protect Enhance
38	Heysham Mossgate Community & Sports Centre	1042059	LA3 2AW	3G	Community organisation	One standard quality full size 3G pitch that is sports lit and available for community use. Pitch was built in 2013 and is identified within the LFFP for resurface. FA registered.	Ensure when required that the pitch is resurfaced, as identified on the LFFP. Ensure pitch is retested and remains on the FA register as required.	Community organisation FF LFA	Local	M	S-M	M-H	Protect Enhance

LANCASTER PLAYING PITCH & OUTDOOR SPORTS STRATEGY STRATEGY & ACTION PLAN

Site ID	Site	Active places ID	Postcode	Sport	Management	Current status	Recommended actions	Partners	Site hierarchy tier	Priority	Timescales	Cost	Aim
46	King Georges Playing Field (Morecambe)	6007516	LA3 1JB	Football	Sports club	One adult, youth 11v11, youth 9v9 and mini 7v7 pitch all of which are standard quality. Adult pitch is overplayed by 0.5 match equivalent sessions, the youth 9v9 pitch is played to capacity at peak time with the remaining pitch types having 0.5 MES of spare capacity at peak time, Pitches are maintained by Westgate Wanderers FC which reports a need for better maintenance equipment.	Improve pitch quality with appropriate levels of maintenance. Explore if demand can be more equally dispersed in order to alleviate overplay. Assist the Club in obtaining new maintenance equipment. Explore the opportunity to add to the LFFP for pitch improvements.	Sports club FF LFA	Local	M	S	L-M	Protect Enhance
46	King Georges Playing Field (Morecambe)	6007516	LA3 1JB	Rugby league	Sports club	Heysham Atoms RLFC has come to an agreement with the Council and Westgate Wanderers FC to join the lease at King Georges Playing Field (Morecambe). The Club is due to relocate to the site at the end of the 2023 season with matches beginning to be played from the 2024 season.	Assist the Club in relocating to the site and establishing one dedicated rugby league pitch and one dual football/rugby league pitch.	Sports club RFL	Local	M	S-M	L-M	Provide
47	Lancaster And Morecambe College	1004607	LA1 2TY	Football	Education	One adult and one youth 9v9 both of which are good quality and available for community use. Spare capacity discounted due to unsecure tenure.	Sustain pitch quality as appropriate to meet levels of curricular and extracurricular demand.	Education FF LFA	Local	L	L	L	Protect
47	Lancaster And Morecambe College	1004607	LA1 2TY	3G	Education	One standard quality full size 3G pitch built in 2011. Pitch is considered not available for community use despite being used by Morecambe FC. Pitch is FA certified and sports lit. The pitch has a shock pad however is not currently WR compliant.	Look to get more community access of the pitch. When required, look to resurface the pitch. Ensure a sinking fund is in place. Ensure pitch is retested and remains on the FA/RFU register as required. Explore the option of securing WR certification and providing Vale of Lune RUFC access.	Education FF LFA	Local	M	M	M-H	Protect Enhance
47	Lancaster And Morecambe College	1004607	LA1 2TY	Tennis	Education	Four standard quality sports lit macadam courts that not available for community use.	Sustain court quality with appropriate levels of maintenance.	Education LTA	Local	L	L	L	Protect
68	Morecambe Bay Academy	1201420	LA4 5BG	Football	Education	One youth 1v11 and two youth 9v9 pitches all of which are poor quality. Not available for community use. Site is identified within the LFFP for both pitch and ancillary enhancements.	Look to get more community access to the pitches. Improve pitch quality with enhanced level of maintenance. Once improved look to formalise community access.	Education FF LFA	Key centre	M	M	M	Protect Enhance Provide
68	Morecambe Bay Academy	1201420	LA4 5BG	3G	Education	One full size community available sports lit 3G pitch. Pitch is standard quality being built in 2014. Previously on the FA register but this has expired.	Look to keep both pitch and ancillary enhancements on the LFFP linked to both grass and artificial provision. When required, look to resurface the pitch. Ensure a sinking fund is in place.	Education FF LFA	Key centre	M	M	M-H	Protect Enhance

LANCASTER PLAYING PITCH & OUTDOOR SPORTS STRATEGY STRATEGY & ACTION PLAN

Site ID	Site	Active places ID	Postcode	Sport	Management	Current status	Recommended actions	Partners	Site hierarchy tier	Priority	Timescales	Cost	Aim
68	Morecambe Bay Academy	1201420	LA4 5BG	Cricket	Education	One standalone NTP.	Retain as current use.	Education ECB, LCB	Key centre	L	L	L	Protect
68	Morecambe Bay Academy	1201420	LA4 5BG	Rugby union	Education	Previously accommodate one rugby union pitch.	Look to reinstate provision if demand warrants.	Education RFU	Key centre	L	L	L	Protect
68	Morecambe Bay Academy	1201420	LA4 5BG	Tennis	Education	Four standard quality macadam courts that are sports lit but not available for community use.	Sustain court quality as appropriate to meet curricular and extracurricular demand.	Education LTA	Key centre	L	L	L	Protect
69	Morecambe Bay Community Primary School	30010285	LA4 5JL	Hockey	Education	One small size hockey suitable AGP that is not sports lit nor available for community use.	Sustain quality as appropriate to meet curricular and extracurricular demand.	Education EH	Local	L	L	L	Protect
70	Morecambe Cricket Club	1208396	LA4 4NL	Cricket	Sports club	One good quality square with 14 wickets that is overplayed by five match equivalent sessions a season.	Sustain square quality with appropriate maintenance and monitor minor levels of overplay.	Sports club ECB LCB	Local	L	S	L	Protect
71	Morecambe FC (Mazuma Stadium)	1069700	LA4 4TB	Football	Sports club	One good quality sports lit adult pitch used by Morecambe FC.	No action required.	Sports club	Local	L	L	L	Protect
71	Morecambe FC (Mazuma Stadium)	1069700	LA4 4TB	3G	Private	One full size and one small size 3G pitch both of which are sports lit and not available for community use. Both pitches are poor quality.	Explore potential options for community access and refurbishment.	Private FF LFA	Local	L	L	L	Protect
72	Morecambe Golf Club Ltd	1101604	LA4 6AJ	Golf	Members	An 18 hole members golf course.	Ensure quality is appropriate for levels of demand accessing the site. Retain as current use.	Private Members EG	Local	L	L	L	Protect
80	Peel Avenue Playing Fields	6007456	LA3 2TF	Football (Disused)	Council	Previously had one adult pitch marked out. It now has one set of goal posts remaining and the pitch maintained for recreational use only.	Retain as strategic reserve if an increase in demand warrants reinstating the provision. Ensure any permanent loss of provision meets national planning policy requirements.	Council FF LFA	Local	L	L	L	Protect
85	Regent Park (bowls)	N/A	LA3 1AG	Bowls	Council	One good quality crown green used by Bay Mixed BC.	Sustain green quality with appropriate maintenance.	Council BCGBA	Local	L	L	L	Protect
108	The Trimpell Club	20001885	LA4 4UP	Football	Sports club	One adult and one mini 7v7 both of which are standard quality and one poor quality youth 11v11 pitch. Adult pitch has actual spare capacity of one match equivalent session, the mini 7v7 pitch is played to capacity at peak time and the youth 11v11 pitch is overplayed by 1.5 match equivalent sessions. Site is receiving GPMF (Trimpell & Bare Rangers FC).	Use GPMF to improve pitch quality and alleviate overplay.	Sports club FF LFA	Local	M	S	L	Protect Enhance
108	The Trimpell Club	20001885	LA4 4UP	Cricket	Sports club	One good quality square with 10 wickets that has capacity to accommodate more demand. Accompanied by poor quality practice facilities.	Sustain square quality with appropriate maintenance. Utilise spare capacity to accommodate future demand / alleviate shortfalls. Explore options to refurbish poor quality practice provision.	Sports club ECB LCB	Local	L	S	L	Protect Enhance
108	The Trimpell Club	20001885	LA4 4UP	Bowls	Sports club	One good quality crown green used by Trimpell BC and Cumberland View BC.	Sustain green quality with appropriate maintenance.	Sports club BCGBA	Local	L	L	L	Protect

**LANCASTER PLAYING PITCH & OUTDOOR SPORTS STRATEGY
STRATEGY & ACTION PLAN**

Site ID	Site	Active places ID	Postcode	Sport	Management	Current status	Recommended actions	Partners	Site hierarchy tier	Priority	Timescales	Cost	Aim
137	Cumberland View	N/A	LA3 1DE	Bowls (Disused)	Council	One disused crown green.	Retain as strategic reserve if an increase in demand warrants reinstating the provision. Ensure any permanent loss of provision meets national planning policy requirements.	Council BCGBA	Local	L	L	L	Protect

LANCASTER CITY COUNCIL PLAYING PITCH & OUTDOOR SPORTS STRATEGY

LANCASTER ANALYSIS AREA

Area summary – pitch sports

Sport	Area	Pitch type	Current capacity total in MES ^[1]	Future capacity total in MES (2031)
Football (grass)	Lancaster	Adult	Spare capacity of 4	Spare capacity of 3.5
Football (grass)	Lancaster	Youth 11v11	Shortfall of 1	Shortfall of 1
Football (grass)	Lancaster	Youth 9v9	Spare capacity of 1.5	Spare capacity of 1.5
Football (grass)	Lancaster	Mini 7v7	At capacity	At capacity
Football (grass)	Lancaster	Mini 5v5	At capacity	At capacity
Football (grass)	District-wide	Adult	Spare capacity of 8	Spare capacity of 7.5
Football (grass)	District-wide	Youth 11v11	Shortfall of 5	Shortfall of 5.5
Football (grass)	District-wide	Youth 9v9	Spare capacity of 1.5	Spare capacity of 1
Football (grass)	District-wide	Mini 7v7	Spare capacity of 0.5	At capacity
Football (grass)	District-wide	Mini 5v5	Spare capacity of 1	Spare capacity of 0.5
Football (3G pitches)	Lancaster	Full size, with sports lighting	Shortfall of 2	Shortfall of 2
Football (3G pitches)	District-wide	Full size, with sports lighting	Shortfall of 4	Shortfall of 4
Cricket	Lancaster	Senior (Saturday)	Shortfall of 10	Future capacity based on a District-wide basis
Cricket	Lancaster	Senior (Sunday)	Shortfall of 10	Future capacity based on a District-wide basis
Cricket	Lancaster	Junior (Midweek)	Shortfall of 10	Future capacity based on a District-wide basis
Cricket	District-wide	Senior (Saturday)	Spare capacity of 9	Shortfall of 3
Cricket	District-wide	Senior (Sunday)	Spare capacity of 21	Spare capacity of 9
Cricket	District-wide	Junior (Midweek)	Spare capacity of 25	Spare capacity of 21
Rugby union	Lancaster	Senior	Shortfall of 12.25	Shortfall of 12.25
Rugby union	District-wide	Senior	Shortfall of 12.25	Shortfall of 12.25
Rugby league	District-wide	Senior	Shortfall of 4.5	Shortfall of 5 ¹⁴

^[1] MES – match equivalent sessions per week (per season for cricket)

¹⁴ If future demand is realised and the Club were not to relocate from Vale of Lune RUFC the overplay on the current pitch would be five MES per week.

LANCASTER CITY COUNCIL PLAYING PITCH & OUTDOOR SPORTS STRATEGY

Sport	Area	Pitch type	Current capacity total in MES ^[1]	Future capacity total in MES (2031)
Hockey (sand AGPs)	District-wide	Full size, with sports lighting	Sufficient supply but poor quality is a significant issue	Sufficient supply but poor quality is a significant issue

Area summary – non-pitch sports

Sport	Headline findings
Tennis	For club-based tennis, there is considered to be sufficient provision to meet demand. For non-club courts, whilst no courts are identified as having any capacity issues, it cannot be said that supply is sufficient to meet demand due to the large amount of unmet and latent demand evidenced both nationally and in the Lancaster District.
Athletics	Supply is considered sufficient to meet demand, with only two track and field clubs currently based in the District.
Bowls	Five clubs are operating at or above recommended capacity levels and therefore need to be monitored to ensure that supply remains adequate. In general, future demand expressed can be accommodated on existing greens.
Cycling	It is considered that there is sufficient closed road cycling facilities in the District with the Salt Ayre Leisure Centre facility servicing multiple clubs in the Lancaster District.
Golf	With six golf facilities in the Lancaster District and a mix of 18-hole and 9-hole courses, supply is well placed to meet demand. Notwithstanding the above, there may be a gap in demand for a par three golf facility within the Lancaster District.
Other sports	Supply of facilities for lacrosse and American football can sufficiently cater for current levels of demand on either artificial or natural turf pitches.

LANCASTER PLAYING PITCH & OUTDOOR SPORTS STRATEGY STRATEGY & ACTION PLAN

Site ID	Site	Active places ID	Postcode	Sport	Management	Current status	Recommended actions	Partners	Site hierarchy tier	Priority	Timescales	Cost	Aim
7	Barton Road Playing Fields	1069703	LA1 4ER	Football (disused)	Lancashire County Council	Disused football site which can accommodate up to three adult pitches. Planning permission was granted this year (2023) for the development of a flood defence bund onsite. One of the conditions is that sports pitch drainage is to be installed to the playing field, so the pitches on site can be used again in the future. The pitch to the south of the site will temporarily be unusable as the bund is constructed.	Carry out planned enhancements to the site including relevant sports pitch drainage in order to bring back into active use. Once improved look to maximise potential usage and alleviate identified shortfalls for youth 11v11 provision.	Council FF LFA	Local	H	M	M	Protect Enhance
12	Bowerham Lawn Tennis Club	30007211	LA1 4ER	Tennis	Sports club	Four good quality artificial turf courts with sports lighting. Used by Bowerham, Lawn TC which has 126 members.	Sustain court quality with relevant maintenance.	Sports club LTA	Local	L	L	L	Protect
22	Central Lancaster High School	1004589	LA1 3LS	Football	Education	Three adult, one youth 11v11 and two youth 9v9 pitches all of which are poor quality and not available for community use. Played to capacity through curricular/extracurricular usage.	Improve pitch quality and look to establish community use to help meet shortfalls in the area.	Education FF LFA	Key centre	L	L	L-M	Protect Enhance
22	Central Lancaster High School	1004589	LA1 3LS	Rugby union	Education	One poor quality (M0/D1) senior pitch that is not available for community use.	Improve pitch quality as required to meet levels of curricular/extracurricular demand.	Education RFU	Key centre	L	L	L	Protect Enhance
22	Central Lancaster High School	1004589	LA1 3LS	Hockey	Education	One full size hockey AGP which is sports lit. Available for community use but unused due to its poor quality. Built in 2006.	As a priority look to refurbish the pitch with a suitable surface to meet levels of curricular/extracurricular and potential community demand. Explore the opportunity to convert to 3G, however, conversations with EH and football partners should take place if the pitch is to be released for conversion with the decision taking into consideration the quality and accessibility of other hockey provision in the District, namely Lancaster University Sports Centre and University of Cumbria Sports Centre.	Education EH	Key centre	H	S	H	Protect Enhance
22	Central Lancaster High School	1004589	LA1 3LS	Tennis	Education	Two standard quality polymeric courts which are not sports lit nor available for community use.	Sustain court quality with relevant maintenance and refurbish when required.	Education LTA	Key centre	L	L	L	Protect
27	Coronation Fields (Lancaster)	6007544	LA1 5LP	Football	Council	One standard quality adult pitch which is overplayed by 0.5 match equivalent sessions.	Improve pitch quality with enhanced levels of maintenance.	Sports club FF LFA	Local	L	S	L	Protect Enhance
29	Palatine Park	N/A	LA1 4ED	Tennis	Council	Two poor quality macadam courts that are available for community use but are not sports lit. Funding identified for improvement.	Look to improve court quality, accessibility, and utilisation to actualise potential demand.	Council LTA	Local	H	S	L-M	Protect Enhance
29	Palatine Park	N/A	LA1 4ED	Bowls	Council	Two standard quality crown bowling greens used by Palatine BC.	Sustain green quality with appropriate levels of maintenance.	Council BCGBA	Local	L	L	L	Protect

**LANCASTER PLAYING PITCH & OUTDOOR SPORTS STRATEGY
STRATEGY & ACTION PLAN**

Site ID	Site	Active places ID	Postcode	Sport	Management	Current status	Recommended actions	Partners	Site hierarchy tier	Priority	Timescales	Cost	Aim
31	Far Moor	1042598	LA1 3JX	Football	Council	One youth 9v9 and one mini 5v5 pitch which are standard quality and one mini 7v7 pitch that is poor quality. All pitches are played to capacity at peak time. The site has received GPMF grant for maintenance machinery.	Improve pitch quality with enhanced levels of maintenance using new machinery.	Council FF LFA	Local	H	S	L-M	Protect Enhance
39	Highfield Recreation Ground	1042905	LA1 3ES	Tennis	Community organisation	Two standard quality macadam courts with no sports lighting. Council owned and leased to community organisation. The Club is currently receiving quotes to resurface the courts.	Improve courts quality and in the longer term explore options for sports lighting if needed.	Community organisation LTA	Local	M	S	L	Protect
39	Highfield Recreation Ground	1042905	LA1 3ES	Bowls	Community organisation	Two good quality crown bowling greens used by Parkside BC. Council owned and leased to community organisation.	Sustain green quality with appropriate levels of maintenance.	Community organisation BCGBA	Local	L	L	L	Protect
40	HMP Lancaster Farms	30007479	LA1 3QZ	Hockey	HMP	One full size hockey suitable AGP not available for community use nor sports lit.	Retain as current use.	HMP EH	Local	L	L	L	Protect
45	King George V Playing Fields (Slyne Road)	6007528	LA1 2JH	Football	Council	Two standard quality adult pitches with actual spare capacity of two match equivalent sessions. Accompanied by standard quality ancillary facilities. Identified in the LFFP for both pitch and ancillary projects.	Improve pitch quality with enhanced levels of maintenance. Increase levels of use and maximise capacity of pitches onsite.	Council FF LFA	Local	L	S-M	L	Protect Enhance
49	Lancaster City FC (Giant Axe Stadium)	6007360	LA1 5PE	Football	Sports club	One standard quality adult pitch with no actual spare capacity. Site is used for National League System football at Step 3 and is leased to Lancaster City FC. The Club is in the process of extending its current lease in order to potentially access funds to create a full size 3G pitch. The lease would also include securing long term tenure for Lancaster City Juniors FC. The site is identified for ancillary improvements on the LFFP.	Sustain pitch quality with appropriate maintenance. Assist the Club in extending its lease agreement. Explore the creation of a full size 3G pitch onsite or adjacent at Lancaster City Juniors FC. Ensure the pitch and ancillary facilities meet the requirements for continued Step Football.	Sports club Council FF LFA	Local	H	S-M	L-H	Protect Provide
50	Lancaster City Juniors FC	30010422	LA1 5PE	Football	Sports club	Two poor quality youth 11v11 pitches overplayed by one match equivalent session and one mini 7v7 that has no actual spare capacity at peak time. Accompanied by poor quality ancillary provision. Pitches drain poorly and become waterlogged. Identified in the LFFP for pitch enhancements. Lancaster City FC is in the process of extending the lease on the site.	Ensure both pitch and ancillary improvements are included in the updated LFFP. Improve pitch quality with enhanced levels of maintenance. Assist in the extending the lease to secure long term tenure. Explore options to improve the quality of onsite ancillary provision. Explore the creation of a full size 3G pitch onsite or adjacent at Lancaster City FC (Giant Axe Stadium).	Sports club Council FF LFA	Local	H	S-M	L-H	Protect Enhance Provide
51	Lancaster Cricket & Sports Club	1208392	LA1 5QU	Football	Sports club	One youth 11v11, two youth 9v9 and one mini 5v5 pitch all of which are standard quality. The youth 11v11 and two youth 9v9 pitches have actual spare capacity at peak time of 0.5 and 1.5 match equivalent sessions, respectively.	Sustain pitch quality with appropriate maintenance. Utilise spare capacity to alleviate shortfalls / actualise future and latent demand.	Sports club FF LFA	Key centre	L	S	L	Protect

LANCASTER PLAYING PITCH & OUTDOOR SPORTS STRATEGY STRATEGY & ACTION PLAN

Site ID	Site	Active places ID	Postcode	Sport	Management	Current status	Recommended actions	Partners	Site hierarchy tier	Priority	Timescales	Cost	Aim
51	Lancaster Cricket & Sports Club	1208392	LA1 5QU	Cricket	Sports club	One standard quality grass square with 16 wickets that is overplayed by six match equivalent sessions a season. Accompanied by poor quality practice facilities. Leased to Lancaster CC.	Improve square quality with enhanced maintenance in order to alleviate overplay. Explore options to refurbish practice provision.	Sports club ECB LCB	Key centre	M	M	M	Protect Enhance
51	Lancaster Cricket & Sports Club	1208392	LA1 5QU	Tennis	Sports club	Three good quality artificial courts which are sports lit. Used by Lancaster TC which has 115 members.	Sustain courts quality with appropriate maintenance.	Sports club LTA	Key centre	L	L	L	Protect
51	Lancaster Cricket & Sports Club	1208392	LA1 5QU	Bowls	Sports club	One good quality sports lit crown bowling green used by Lune Road BC which has 72 members. Green is overplayed.	Sustain green quality with appropriate maintenance and monitor levels of demand and overplay.	Sports club BCGBA	Key centre	L	L	L	Protect
52	Lancaster Girls Grammar School	1103444	LA1 1SF	Hockey	Education	One full size standard quality hockey suitable AGP that is not sports lit nor available for community use.	Sustain quality as appropriate to meet curricular and extracurricular demand.	Education EH	Local	L	M	L	Protect
52	Lancaster Girls Grammar School	1103444	LA1 1SF	Tennis	Education	12 standard quality artificial turf courts that are nor sports lit nor available for community use.	Sustain quality as appropriate to meet curricular and extracurricular demand.	Education LTA	Local	L	M	L	Protect
54	Lancaster Moor Hospital Cricket Club (Closed)	1208394	LA1 3JR	Cricket (Disused)	Unknown	There was previously a grass wicket square at Lancaster Moor Hospital Cricket Club. The site contained eight wickets, with the accompanying pavilion being demolished. Site now maintained as public open space with S106 contribution secured allocated to Far Moor.	Ensure any permanent loss of provision meets national planning policy requirements.	Unknown ECB LCB	Local	L	L	L	Protect
55	Lancaster Ridge Community Primary School	6012828	LA1 3LE	Football	Education	One poor quality mini 7v7 pitch that is not available for community use.	Improve quality as required to meet levels of curricular/extracurricular demand,	Education FF LFA	Local	L	L	L	Protect Enhance
57	Lancaster Royal Grammar School	1201302	LA1 3EF	Football	Education	Site previously accommodated two adult pitches however these are no longer marked out.	Look to reinstate provision if demand warrants.	Education FF LFA	Local	L	L	L	Protect
57	Lancaster Royal Grammar School	1201302	LA1 3EF	Cricket	Education	Two good quality grass squares and a separate NTP. Accompanied by good quality practice provision. Not available for community use.	Sustain quality with appropriate levels of maintenance.	Education ECB LCB	Local	L	L	L	Protect
58	Lancaster Royal Grammar School Grass Pitches (Memorial Playing Field)	1041526	LA1 3ES	Rugby union	Education	Four standard quality (M1/D1) senior pitches which are played to capacity through curricular/extracurricular demand.	Sustain quality with appropriate levels of maintenance.	Education RFU	Local	L	L	L	Protect
59	Lancaster University Sports Centre	1004646	LA1 4XX	Football	University	Five standard and one poor quality adult pitch. The adult pitches have no spare capacity at peak time.	Improve pitch quality with enhanced levels of maintenance.	University FF LFA	Hub site	L	M	M	Protect Enhance

**LANCASTER PLAYING PITCH & OUTDOOR SPORTS STRATEGY
STRATEGY & ACTION PLAN**

Site ID	Site	Active places ID	Postcode	Sport	Management	Current status	Recommended actions	Partners	Site hierarchy tier	Priority	Timescales	Cost	Aim
59	Lancaster University Sports Centre	1004646	LA1 4XX	3G	University	One standard quality full size sports lit 3G pitch. It is considered unavailable for community use as it is primarily used for university demand. Pitch is FA and WR compliant. Built in 2014. Also used for Lacrosse.	Sustain pitch quality as appropriate with appropriate maintenance. Look to refurbish the pitch as required using relevant sinking fund. Ensure the pitch is retested as required to remain on the FA and WR register. Explore the option of providing access to Vale of Lune RUFC for midweek training demand.	University FF LFA RFU	Hub site	M	M	M	Protect
59	Lancaster University Sports Centre	1004646	LA1 4XX	Rugby union	University	Three good quality (M2/D1) senior pitches that are available for community use. Used by Lancaster University RUFC. Spare capacity discounted due to unsecure tenure. One pitch is overmarked for rugby league and American football.	Sustain pitch quality with appropriate levels of maintenance.	University RFU	Hub site	L	L	L	Protect
59	Lancaster University Sports Centre	1004646	LA1 4XX	Hockey	University	Two full size poor quality hockey suitable AGPs (2009/2005). Pitches are sports lit and actively used for community hockey (Lancaster HC).	As a priority look to refurbish both pitches with relevant hockey suitable surfaces. Once refurbished look secure tenure for community users and ensure a sinking fund is in situ.	University EH	Hub site	H	S	H	Protect Enhance
59	Lancaster University Sports Centre	1004646	LA1 4XX	Tennis	University	Eight good quality macadam courts that are sports lit and available for community use. Site previously had more courts, but these are now unmarked.	Sustain court quality with appropriate levels of maintenance.	University LTA	Hub site	L	L	L	Protect
59	Lancaster University Sports Centre	1004646	LA1 4XX	Bowls	University	One good quality crown bowling green used by Lancaster University BC.	Sustain green quality with appropriate maintenance.	University BCGBA	Hub site	L	L	L	Protect
59	Lancaster University Sports Centre	1004646	LA1 4XX	Rugby league	University	Rugby league pitch is overmarked on a rugby union pitch. Used for university demand.	Sustain quality with appropriate maintenance.	University RFL	Hub site	L	L	L	Protect
60	Lansil Sports And Social Club	1101603	LA1 3PE	Bowls	Sports club	Two good quality crown bowling greens used by Lansil BC and Station Hotel BC.	Sustain green quality with appropriate levels of maintenance.	Sports club BCGBA	Local	L	L	L	Protect
60	Lansil Sports And Social Club	1101603	LA1 3PE	Golf	Members	A nine hole golf course available for pay & play.	Ensure quality is appropriate for levels of demand accessing the site. Retain as current use.	Private Members EG	Local	L	L	L	Protect
78	Our Lady's Catholic College	1014833	LA1 2RX	Football	Education	One poor quality youth 11v11 that is overplayed by 0.5 match equivalent sessions from community, curricular and extracurricular demand.	Improve pitch quality with enhanced levels of maintenance.	Education FF LFA	Local	L	S	L	Protect Enhance
78	Our Lady's Catholic College	1014833	LA1 2RX	Tennis	Education	Three standard quality macadam courts that are not sports lit nor available for community use.	Sustain court quality with appropriate maintenance.	Education LTA	Local	L	M	L	Protect
86	Ripley St Thomas CE Academy	1004631	LA1 4RS	Football	Education	The site previously accommodated four adult football pitches.	Look to reinstate provision if demand warrants.	Education FF LFA	Local	L	L	L	Protect

LANCASTER PLAYING PITCH & OUTDOOR SPORTS STRATEGY STRATEGY & ACTION PLAN

Site ID	Site	Active places ID	Postcode	Sport	Management	Current status	Recommended actions	Partners	Site hierarchy tier	Priority	Timescales	Cost	Aim
86	Ripley St Thomas CE Academy	1004631	LA1 4RS	Cricket	Education	Two standard quality grass squares. Not available for community use.	Sustain quality with appropriate levels of maintenance.	Education ECB LCB	Local	L	L	L	Protect
86	Ripley St Thomas CE Academy	1004631	LA1 4RS	Rugby union	Education	One poor quality (M0/D1) senior pitch that is not available for community use.	Improve pitch quality with enhanced levels of maintenance.	Education FF LFA	Local	L	S	L	Protect Enhance
86	Ripley St Thomas CE Academy	1004631	LA1 4RS	Hockey	Education	One poor quality small size hockey suitable pitch that is sports lit and available for community use. Built in 2000.	Look to refurbish the pitch to better meet community, curricular and extracurricular demand. Ensure a sinking fund is in situ.	Education EH	Local	M	S	M	Protect Enhance
86	Ripley St Thomas CE Academy	1004631	LA1 4RS	Tennis	Education	Five poor quality macadam courts that are sports lit but not available for community use.	Look to improve court quality as required based on levels of curricular and extracurricular demand.	Education LTA	Local	L	M	M	Protect Enhance
87	Royal Albert Playing Field	6007458	LA1 5LB	Football	Council	One adult, youth 11v11 and mini 5v5 pitch all of which are poor quality. The youth 11v11 is overplayed by one match equivalent session, the adult pitch is played to capacity and the mini pitch has no actual spare capacity at peak time. Site is accompanied by poor quality ancillary provision. Both pitches and ancillary provision are identified in the LFFP.	Keep both pitch and ancillary improvements on the LFFP. Improve pitch quality with enhanced levels of maintenance. Explore options to improve ancillary provision.	Council FF LFA	Local	M	M	M	Protect Enhance
88	Ryelands Park Playing Fields	6007587	LA1 2LN	Football	Council	Two adult and two youth 11v11 pitches that have two and one match equivalent sessions of spare capacity at peak time. All pitches are standard quality. Site is accompanied by poor quality ancillary provision. Both pitches and ancillary provision are identified in the LFFP.	Keep both pitch and ancillary improvements on the LFFP. Improve pitch quality with enhanced levels of maintenance. Explore options to improve ancillary provision or look at providing new ancillary provision closer to the existing pitches onsite.	Council FF LFA	Local	M	M	M	Protect Enhance
90	Salt Ayre Leisure Centre	1004634	LA1 5JS	Football	Council	One adult and one youth 11v11 pitch both of which are standard quality. The former has actual spare capacity of 0.5 match equivalents sessions whereas the latter is played to capacity at peak time. Good quality ancillary provision but still on the LFFP for enhancements.	Sustain pitch quality with appropriate levels of maintenance. Consider removing from the LFFP for ancillary improvements.	Council FF LFA	Local	L	L	L	Protect
90	Salt Ayre Leisure Centre	1004634	LA1 5JS	Athletics	Council	A standard quality synthetic 400m sports lit track which is Trackmark compliant until September 2024. Site is suited to service larger geographically areas if it progresses to meet further Trackmark accreditations. Due to no pole vault and insufficient quality of water jumps, the track has limitations on what type of competition it accommodates.	Ensure the provision remains Trackmark compliant and look to progress its accreditation to allow for larger events. Explore opportunities to improve the quality of the water jumps and establish pole vault. Look to undertake deep clean and work to sustain/improve quality. Plan for respray and resurface within the next 3-5 years.	Council EA	Local	H	L	L	Protect Enhance

LANCASTER PLAYING PITCH & OUTDOOR SPORTS STRATEGY STRATEGY & ACTION PLAN

Site ID	Site	Active places ID	Postcode	Sport	Management	Current status	Recommended actions	Partners	Site hierarchy tier	Priority	Timescales	Cost	Aim
90	Salt Ayre Leisure Centre	1004634	LA1 5JS	Cycling	Council	One 0.8 mile tarmac surface closed road cycling circuit. Utilised for closed track time trials. Utilised by numerous clubs.	Protect the facility and ensure that quality remains sufficient to accommodate the level of demand received.	Council BC	Local	L	L	L	Protect
95	Skerton Community High School (Closed)	1201750	LA1 2BL	Football (Disused)	Council	The former Skerton Community High School closed in 2014 and now lies disused. The front of the site was marked with two dual use pitches used for football by the school only with no community use. This site has recently been purchased by the City Council.	Retain as strategic reserve if an increase in demand warrants reinstating the provision.	Council FF LFA	Local	H	L	L	Protect
110	Torrisholme Cricket Club	1208398	LA1 2PL	Cricket	Sports club	One standard quality square with 14 grass wickets and two NTPs. Overplayed by four match equivalent sessions a season. Torrisholme CC own the site and has plans to develop and improve its ancillary provision.	Improve square quality with enhanced maintenance to alleviate overplay. Assist the Club where possible in its plans to improve its ancillary provision.	Sports club ECB LCB	Local	M	M	L-M	Protect Enhance
112	University of Cumbria Sports Centre (Lancaster Campus)	1004640	LA1 3JD	Football	University	One standard quality adult pitch overplayed by 0.5 match equivalent sessions. The University express interest in the potential to develop this grass pitch into a 3G pitch in the future.	Improve pitch quality with enhanced maintenance to alleviate overplayed. Explore the potential of developing pitch into 3G pitch.	University FF LFA	Local	L	L	H-L	Protect Enhance Provide
112	University of Cumbria Sports Centre (Lancaster Campus)	1004640	LA1 3JD	Hockey	University	One full size sports lit hockey suitable AGP that is available for community use. Last refurbished in 2012	Sustain pitch quality with appropriate maintenance. Ensure pitch is refurbished as a hockey suitable surface when required. Ensure a sinking fund is in situ.	University EH	Local	M	M	M-H	Protect
113	Vale of Lune Rugby Union Football Club	1036258	LA1 2TT	Rugby union	Sports club	One standard (M1/D1) and three poor quality (M0/D1) senior pitches. One of the poor quality pitches is sports lit. Site is overplayed by 12.25 match equivalent sessions. Vale of Lune RUFC reports that its ancillary provision is of standard quality. It has several changing rooms and function/bar which it operates. The Club reports that the toilets require updating, with other remedial work required to the clubhouse to improve the quality.	Improve pitch quality with enhanced levels of maintenance. Explore if drainage can be enhanced to create additional capacity. Explore installing additional sports lighting in order to better disperse demand. Assist the Club where possible with improve its ancillary provision. Explore utilisation of WR compliant 3G to alleviate overplay.	Sports club RFU	Local	H	S-M	M-H	Protect Enhance
117	Westgate Cricket Club	1040864	LA1 2TT	Cricket	Private	One good quality 12 wicket square that has no additional capacity remaining. Used by Westgate CC which has an unsecure rolling agreement.	Sustain square quality with appropriate maintenance. Look to secure long term tenure for the Club.	Private Sports club ECB LCB	Local	M	S	L	Protect
122	York Road Playing Field	6007509	LA1 4DW	Football	Sports club	One adult and one mini 7v7 pitch both of which are standard quality. Storeys of Lancaster FC has long term tenure on the site and is receiving GPMF. The Club plans to secure the site and develop its ancillary provision.	Use GPMF to improve pitch quality. Explore potential options to secure the site and improve ancillary provision.	Sports club FF LFA	Local	M	S-M	M	Protect Enhance

**LANCASTER PLAYING PITCH & OUTDOOR SPORTS STRATEGY
STRATEGY & ACTION PLAN**

Site ID	Site	Active places ID	Postcode	Sport	Management	Current status	Recommended actions	Partners	Site hierarchy tier	Priority	Timescales	Cost	Aim
123	Bare Cricket Club	N/A	LA1 2TT	Cricket	Private	One good quality 10 wicket square that has no additional capacity remaining. Used by Bare CC which has an unsecure rolling agreement. Accompanied by poor quality ancillary provision.	Sustain square quality with appropriate maintenance. Look to secure long term tenure for the Club. Look at options to improve ancillary provision quality.	Private Sports club ECB LCB	Local	M	S	L	Protect
130	Luneside & Rosebank Bowling & Recreation Club	N/A	LA1 5NT	Bowls	Sports club	One good quality crown green used by Luneside & Rosebank BC. Green is operating over recommended capacity.	Sustain green quality with appropriate levels of maintenance.	Sports club BCGBA	Local	L	L	L	Protect
133	Westfield Memorial Village	N/A	LA1 5QG	Bowls	Community organisation	One good quality crown green used by Westfield Memorial Village Crown Green BC.	Sustain green quality with appropriate levels of maintenance.	Community organisation BCGBA	Local	L	L	L	Protect
138	Skerton Liberal Club	N/A	LA1 2AJ	Bowls	Sports club	One good quality crown green used by Skerton Liberal BC.	Sustain green quality with appropriate levels of maintenance.	Sports club BCGBA	Local	L	L	L	Protect

LANCASTER PLAYING PITCH & OUTDOOR SPORTS STRATEGY STRATEGY & ACTION PLAN

PART 7: HOUSING GROWTH

The Sport England Playing Pitch Calculator (PPC)¹⁵ helps local authorities estimate the demand that may be generated for the use of playing pitches by a new population. It's designed to assist those developing and implementing a playing pitch strategy by giving a consistent starting point to help estimate the demand from a new population. This can then be refined locally as appropriate through consultation with Sport England/NGBs and using the PPOSS.

The PPOSS provides an estimate of demand for pitch sports based on population forecasts and club consultation to 2043. This future demand is translated into teams likely to be generated, rather than actual pitch provision required. The PPC adds to this, updating the likely demand generated for pitch sports based on housing increases and converts the demand into match equivalent sessions and the number of pitches required. This is achieved via team generation rates in the Assessment Report to determine how many new teams would be generated from an increase in population derived from housing growth and gives the associated costs of supplying the increased pitch provision.

Experience shows that housing sites with 600 dwellings or more are likely to generate demand for new provision to be created. For such large scale developments, consideration should be given to providing multi-pitch sites with suitable ancillary provision, including appropriate clubhouse/changing facilities and car parking. Single pitch sites which have been provided traditionally by developers are not considered to provide long term sustainable provision for the relevant sports.

Where demand does not warrant new pitch provision, the Action Plan in this document should be consulted to determine whether the additional demand can be accommodated via existing provision (in which case no further action is required). If this is not the case, contributions should be sought to enhance existing provision in the locality to accommodate the increased demand. This can be through, for example, improving quality, or providing new or improved ancillary provision. Consultation with appropriate NGBs should also be used to assist in the selection of suitable sites and suitable enhancements.

For a residential development of 300 dwellings or more, Sport England responds to such applications as a non-statutory consultee in line with its planning aim and objectives, its wider Planning for Sport guidance and relevant areas of the Government's National Planning Policy Framework, e.g., Section 8; and paragraph 98. In doing so Sport England will assess the resulting demand for sporting facilities in line with its strategy Uniting the Movement and will use the Playing Pitch Calculator (and Built Facilities Calculator) to advise local planning authorities of what is expected as a financial contribution to meet this demand.

The scenario below is an example of how the PPC will show the potential additional demand for pitch sports that could be generated from housing growth in the Lancaster District, thus showing how the calculator works and what it provides. The demand is shown in match equivalent sessions per week for most sports, except for cricket, where match equivalent sessions are by season. Training demand is expressed in either hours or match equivalent sessions. Where expressed in hours, it is expected that demand will be to either a 3G pitch (to accommodate football demand) or an AGP (to accommodate hockey demand). Where expressed in match equivalent sessions, it is expected training will take place on floodlit grass pitches (rugby).

¹⁵<https://www.sportengland.org/how-we-can-help/facilities-and-planning/planning-for-sport/playing-pitch-calculator> Please note that you need to register to access the PPC.

LANCASTER PLAYING PITCH & OUTDOOR SPORTS STRATEGY STRATEGY & ACTION PLAN

- ◀ **Scenario One** – additional demand for pitch sports generated from housing growth covering the Local Plan period. Total an additional population of 9,346.

Please note that a Local Plan review will soon commence in Lancaster and the housing figures used above, will be under review. Therefore, the PPC can be updated throughout the lifespan of the PPOSS to reflect population projections and change in the average household size. In addition, the PPC can be used on an individual site allocation basis to help determine site specific need. This should also be done in consultation with Sport England and NGBs and using the key findings of this Strategy.

Scenario One – Demand arising from an additional population of 9,346.

The anticipated population increase over the 20year period (2043) equates to seven match equivalent sessions of demand per week for grass pitch sports, 0.51 match equivalent sessions on hockey suitable AGP and 45 match equivalent sessions of demand per season for cricket. Training demand equates to 13.09 hours of use per week for football on 3G pitches and 1.25 hours on hockey suitable AGP.

Table 7.1: Likely demand for grass pitch sports generated from a population increase of 9,346

Pitch sport	Estimated demand by sport	
	Match demand (MES) per week ¹⁶	Training demand ¹⁷
Adult football	1.54	13.09 hours
Youth football	2.57	As above
Mini soccer	2.43	As above
Rugby union	0.43	0.49 equivalent sessions
Rugby league	0.17	0.21 match equivalent sessions
Adult hockey	0.38	1.13 hours
Junior & mixed hockey	0.13	0.12 hours
Cricket	45.43	-

The table below translates estimated demand into new pitch provision with associated capital and lifestyle costs.

Table 7.2: Estimated demand and costs for new pitch provision

Pitch type	Estimated demand and costs for new pitches			Changing rooms	
	Number of pitches to meet demand	Capital cost ¹⁸	Lifecycle Cost (per annum) ¹⁹	Number	Capital cost
Adult football	1.54	£162,144	£34,212	3.09	£582,947
Youth football	2.57	£218,418	£45,868	2.59	£489,585
Mini soccer	2.43	£72,883	£15,305	0.00	£0
Rugby union	0.43	£69,555	£14,885	0.87	£164,106
Rugby league	0.17	£23,285	£5,146	0.33	£62,786
Cricket	0.99	£326,940	£66,042	1.98	£374,000
Sand AGPs	0.09	£81,176	£2,516	0.19	£35,632

¹⁶ As per the PPS Guidance, demand for cricket is considered in terms of match equivalent sessions per season rather than per week.

¹⁷ Hours equate to access to a 11v11 floodlit 3G pitch or hockey suitable AGP

¹⁸ Sport England Facilities Costs Second Quarter 2020 – (<https://www.sportengland.org/facilities-planning/design-and-cost-guidance/cost-guidance/>)

¹⁹ Lifecycle costs are based on the % of the total project cost per annum as set out in Sport England's Life Cycle Costs Natural Turf Pitches and Artificial Surfaces documents (2012)

LANCASTER PLAYING PITCH & OUTDOOR SPORTS STRATEGY STRATEGY & ACTION PLAN

Pitch type	Estimated demand and costs for new pitches			Changing rooms	
	Number of pitches to meet demand	Capital cost ¹⁸	Lifecycle Cost (per annum) ¹⁹	Number	Capital cost
3G pitches	0.34	£370,212	£13,698	0.69	£130,005
Total	8.57	£1,324,614	£197,673	9.74	£1,839,061

Overall, an additional 8.57 pitches would be required to meet additional demand arising from a population increase of 9.346. This would require an expected capital cost of £1,324,614 and a lifecycle cost per annum of £197,673.

Conclusion

For the example scenario above, the tables show, that through housing growth some demand will be generated for football, rugby union, rugby league, hockey and cricket. In addition, the tables indicates that, over the course of the 20 year period, housing growth will result in increased demand equating to the potential need for one adult, two youth pitch and two mini football pitches, as well as one cricket square.

The PPOSS shows that there are shortfalls across youth football pitches, 3G pitches, rugby union pitches, rugby league pitches and cricket squares therefore, the predicted growth is going to decrease the shortfalls further. On this basis, any future development of new pitch provision should consider current shortfalls to work out where best to place the new provision to also alleviate overplay.

However, a decision of this nature should be considered in consultation with Sport England and NGBs. Contributions to improving existing sites and increasing the capacity of this provision may also provide a more suitable sporting outcome. The PPOSS and in particular the Action Plan, as well as future consultation with NGBs should be used to inform this (e.g., to select suitable sites).

To provide the greatest impact, contributions from housing developments could be pooled together to improve key sites. The action plan identifies high priority sites which would likely provide the most benefit from investment.

LANCASTER PLAYING PITCH & OUTDOOR SPORTS STRATEGY STRATEGY & ACTION PLAN

PART 8: DELIVER THE STRATEGY AND KEEP IT ROBUST AND UP TO DATE

The section below is a generalised approach on how to deliver a PPOSS whilst also keeping it robust and up to date. However, a more tailored approach should also be considered and designed for the Lancaster District based on the requirements and priorities of the Steering Group.

Delivery

The PPOSS seeks to provide guidance for maintenance/management decisions and investment made across the Lancaster District in relation to playing pitch and outdoor sports facilities as well as supporting ancillary facilities. By addressing the issues identified in the Assessment Report and by using the strategic framework presented in this Strategy, the current and future sporting and recreational needs of the District can be satisfied. The Strategy identifies where there is a deficiency in provision and identifies how best to resolve this moving forward.

It is important that this document is used in a practical manner, is engaged with partners and encourages partnerships to be developed, to ensure that outdoor sports facilities are regarded as a vital aspect of community life and which contribute to the achievement of Council priorities. The creation of this document should therefore be regarded as only part of the planning process. The success of the Strategy and the benefits that are gained are dependent upon regular engagement between all partners involved and the adoption of a strategic approach. To that end, each member of the steering group should take the lead to ensure the PPOSS is used and applied appropriately within their area of work and influence.

To help ensure the PPOSS is well used, it should be regarded as a key document within the study area, guiding the improvement and protection of playing pitch and outdoor sport provision, being used to attract and distribute both internal and external investment, and being used as an evidence base to support or oppose any development proposals. It needs to be the document people regularly turn to for information on the how the current demand is being met and what actions are required to improve the situation and meet future demand. The Steering Group also needs to have a clear understanding of how the PPOSS can be applied and therefore delivered.

The process of completing the PPOSS will hopefully have already resulted in a number of benefits that will help with its application and delivery. These may include enhanced partnership working across different agendas and organisations, pooling of resources along with strengthening relationships and understanding between different stakeholders and between members of the steering group and the sporting community. The drivers behind the PPOSS and the work to develop the recommendations and action plan will have also highlighted, and helped the steering group to understand, the key areas to which it can be applied and how it can be delivered.

Monitoring and updating

It is important that there is regular monitoring and review against the actions identified in the Strategy. This monitoring should continue be led by the local authority and supported by all members of, and reported back to, the Steering Group. Understanding and learning lessons from how the PPOSS has been applied should also form a key component of monitoring its delivery. It is possible that in the interim between reviews the Steering Group could also operate as a 'virtual' group; prepared to comment on suggestions and updates electronically when relevant.

LANCASTER PLAYING PITCH & OUTDOOR SPORTS STRATEGY STRATEGY & ACTION PLAN

As a guide, if no review and subsequent update has been carried out within three years of the PPOSS being signed off by the Steering Group, then Sport England and the NGBs would consider it and the information on which it is based to be out of date. The nature of the supply and in particular the demand for provision is likely to change year-on-year, meaning that without any form of review and update it would be difficult to make the case that the supply and demand information and assessment work is sufficiently robust. This makes it less likely to be able to be used as an evidence base for any funding bids or development proposals.

To extend the lifespan of the PPOSS for as long as possible, it is advised that regular Steering Group meetings take place to review the study. Ideally, these should take place twice yearly, aligned to the split of summer and winter sport seasons and in line with affiliation periods.

The review process should not be regarded as a particularly resource intensive task. However, it should highlight:

- ◀ Actions undertaken since the adoption of the PPOSS or since the last review, as well as any actions that have been attempted but have been unsuccessful (and for what reason).
- ◀ Any changes required to the priority afforded to each remaining action (as the priority of some may change following the delivery of others or for more general reasons e.g., alterations in participation trends or focus areas).
- ◀ Any significant changes to supply and demand information and what this may mean for the overall assessment work and the key findings and issues.
- ◀ Any development of a specific sport or particular format of a sport.
- ◀ Any new or emerging issues (e.g., development pressures) and opportunities (e.g., S106 contributions or club aspirations).
- ◀ Priority actions to be focused on before the next review.
- ◀ How the PPOSS has been applied to date and the lessons learnt.

Alongside regular steering group meetings a good way to keep the strategy up to date and maintain relationships is to hold sport specific meetings with the NGBs and other relevant parties. These meetings look to update the key supply and demand information, if necessary amend the assessment work, track progress with implementing the recommendations and action plan and highlight any new issues and opportunities.


These meetings could be timed to fit with the annual affiliation process undertaken by the NGBs which would help to capture any changes in the number and nature of sports clubs in the area. Other information that is already collected on a regular basis such as pitch booking records for local authority and other sites could be fed into these meetings.

The NGBs are also able to indicate any further performance quality assessments that have been undertaken within the study area.

LANCASTER PLAYING PITCH & OUTDOOR SPORTS STRATEGY STRATEGY & ACTION PLAN

Checklist

To help ensure the PPOSS is delivered and is kept robust and up to date, the Steering Group can refer to Sport England's Stage E Checklist, as shown below.

Stage E: Deliver the strategy and keep it robust and up to date	Tick 	
	Yes	Requires Attention
Step 9: Apply & deliver the strategy		
◀ Are steering group members clear on how the PPS can be applied across a range of relevant areas?		
◀ Is each member of the steering group committed to taking the lead to help ensure the PPS is used and applied appropriately within their area of work?		
◀ Has a process been put in place to ensure regular monitoring of how the recommendations and action plan are being delivered?		
Step 10: Keep the strategy robust & up to date		
◀ Has a process been put in place to ensure the PPS is kept robust and up to date?		
◀ Does the process involve an annual update of the PPS?		
◀ Is the steering group to be maintained and is it clear of its on-going role?		
◀ Is regular liaison with the NGBs and other parties planned?		
◀ Has all the supply and demand information been collated and presented in a format (i.e. single document that can be filtered accordingly) that will help people to review it and highlight any changes?		
◀ Have any changes made to the Active Places Power data been fed back to Sport England?		