

Greaves Park Management Plan

2015



Plan prepared by Proffitts – Investing in Communities
on behalf of the Friends of Greaves Park, Lancaster City
Council and Lancashire County Council

Contents

Contents	Page Number
1.0 Current Situation	
1.1 Site description	2
1.2 Users and community	3
1.3 Current management of the park	3
1.4 Consultation	3
2.0 Aims and Objectives	
2.1 Vision	4
2.2 Inspirational Images for Greaves Park	5
2.2 SWOT Analysis and themes	7
2.3 Smart aims for each theme	10
3.0 Actions	
3.1 Action plan for each theme	15
♣ 3.1.1 Beech Woods	15
♣ 3.1.2 Community Garden	16
♣ 3.1.3 Informal play	17
♣ 3.1.4 Victorian Path	18
♣ 3.1.5 Viewing Area	19
♣ 3.1.6 Middlewood	20
♣ 3.1.7 Formal Play	21
♣ 3.1.8 Wildlife Ponds	22
♣ 3.1.9 Wider Park	23
♣ 3.1.10 General Actions for Group	25
3.2 Resources and finance required	27
4.0 Appendices	
4.1 Brief history	30
4.2 Evaluation tools	35
4.3 Consultation results	37
4.4 Overall conceptual masterplan	38



1.0 Current Situation

1.1 Site Description

The site is approximately 6.4ha in total and is made up of the grounds of two large houses - Greaves House and Parkfield House.

It is a mixture of open grassed areas with individual trees and small wooded areas. The site slopes from the east to west, offering fantastic views across the city to Morecambe Bay and the Cumbrian Fells. The site is well used throughout the day; by local residents, local school children going to and from school; by the Scouts and by visitors to the Greaves Park pub and restaurant.

Some areas of the site are privately owned—the 5th and 53rd Scout Huts and Greaves Park Pub/ Restaurant (along with the vehicular access, car park and a small area of grounds). Parkfield and two cottages (Horseman's Cottage and West Bank Stables) and a former stable building (now in a poor state of repair) are also privately owned. There are 3 lodges within the park which are privately owned or rented. A large house called 'The Greaves' has no access from the park.

Lancashire County Council own a large area of land to the north east of the site around Bowerham Primary School. There is a well used desireline from Bowerham Road south towards 'The Hole in the Wall' which the group intend to keep maintained and surfaced as part of the overall park maintenance.

The Friends of Greaves Park are an active community group who formed in 2003. They are very active in the park and raised funds to create the children's play area in 2007. Since then they have been involved in arranging activities within the park and also carrying out maintenance tasks and improvements in the park. They have undertaken these projects with the support of Lancaster City Council and are keen to continue this work throughout the park.



1.0 Current Situation

1.2 Users and Community

The park is well used at all times of day throughout the year by various groups and the extended community. Some of the users include:

1. Residents from the district and beyond
2. Dog walkers
3. People using the park as a green route to and from the town centre
4. Bowerham Community Primary School pupils, parents and staff
5. 5th Lancaster Scout Group
6. 53rd Lancaster Scout Group
7. Friends of Greaves Park
8. Picnickers
9. Greaves Park Pub visitors and staff
10. Parkfield offices staff and visitors

1.3 Current Management of the Park

The site is owned by Lancaster City Council who undertake basic maintenance of the park. This includes mowing the formal large areas of grassland to the west of the site as well as some grass paths running from north to south. The grass cutting regime consists of:

- ♣ Mowing every 9 days with ride-on, plus tractor for the field in front of Parkfield;
- ♣ Strimming is carried out every 18 working days; hand mowers round obstacles;
- ♣ Grass paths are mowed with a ride on machine every month.

Basic tree works are also undertaken as required. The tree works are carried out as per Lancaster City Council's tree policy – work is only carried out to trees around the Park which are dead, diseased or dying and which therefore require work.

No weedkilling or treatment of weeds such as knotweed is currently undertaken as there is no need and it is more beneficial to wildlife to limit the amount of chemicals used.

The Friends of Greaves Park are currently focusing on and spending time on the following projects:

- ♣ Bringing the Community Garden back into use with new paths and planting
- ♣ Light touch woodland management (such as keeping paths clear)
- ♣ Defining and surfacing informal paths throughout the park with wood chip
- ♣ Clearance of large areas of brambles and weeds.
- ♣ New equipment in the play area

This work has been carried out with consent from Lancaster City Council. The images below are taken from the Facebook page of the Friends of Greaves Park and show some of the range of activities carried out in Autumn of 2014.

1.4 Consultation

In December 2014, the Friends of Greaves Park carried out a user survey through emails to members; Facebook and asking users in the Park. The results showed some of the key issues were more seating, bins and signage; more play equipment, improving paths; more diverse planting; informal play areas and creation of a view point. For more details, please see **Appendix 4.3 Consultation Results**. The group followed this up in May 2015 with a consultation on the draft masterplan document. Images below are of the group and volunteers hard at work.



2.0 Aims and Objectives

2.1 Vision

The Friends of Greaves Park have worked together to produce a detailed vision statement for the park:

We consider The Greaves Park to be a hidden gem full of green spaces, wonderful trees, and lovely green paths from which to enjoy the park and the views over the city to the Cumbrian Fells. Much of the park cannot be seen from the roads that pass by it, and many people are not aware of the extent of the park or its many aspects. Our vision is to make the public more aware of the park and to encourage people to come in and enjoy it in all its variety.

We also aim to protect and enhance the many features that make The Greaves Park so special. These include:

- ♣ *The opportunities for children and families to play, and to enjoy the semi-wild parts of the park.*
- ♣ *The network of green paths in the park which provide a green and peaceful route through and around the park.*
- ♣ *The beautiful trees in the park, and the spring flowering bulbs. We also hope to encourage more flowering plants, both for their beauty and for their benefit to wildlife.*
- ♣ *The rich variety of wildlife. Our vision is to protect and encourage the ecological variety in the park by protecting the various wildlife habitats, and the peace and tranquillity of the wilder parts of the park.*
- ♣ *The views over the city and Morecambe Bay and the Cumbrian Fells. Our vision is to provide one or more high clearings from which to enjoy the views over the city and the Morecambe Bay area at their best.*

In brief, the aims are:

- ♣ *To make The Greaves Park a lovely tranquil place for people of all ages to visit, to play, to relax, and to enjoy the trees, the green spaces, the flowers, and the wildlife.*
- ♣ *To protect and encourage the natural environment.*
- ♣ *To preserve and improve the network of paths which provide a green and peaceful route through and around the park.*
- ♣ *To build links with the local community and to raise awareness of all that the park can offer*
- ♣ *To improve and extend the play area provision*



2.0 Aims and Objectives

2.2 Inspirational Images for Greaves Park

Community activities:



Wildflower and bulb meadows:



New planting including edible plants and fruit trees:



Play (a new play surfacing for the existing play area ideally covering the whole area and one new play unit are proposed for Greaves Park. The images below show examples of other play areas where the surfacing extends around the whole play area to give ideas of the type of surfacing available):



2.0 Aims and Objectives

2.2 Inspirational Images for Greaves Park (continued)

Community activities and informal play:



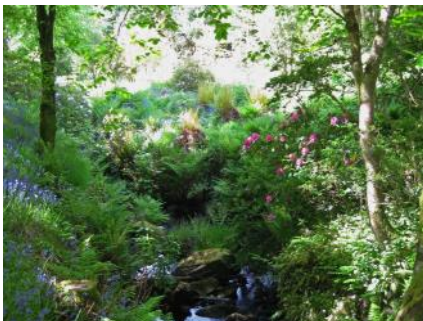
Seats, signage and viewing areas:



woodland flowering plants:

New planting including shade tolerant

plants and



Pond:



2.0 Aims and Objectives

2.3 SWOT Analysis and themes

The following eight key themes were identified by the group through their extensive knowledge of the park and through the work they undertake throughout the Park. They are listed in no particular order:

1. Paths
2. Trees
3. Grass and wildflower meadows
4. Signage and interpretation
5. People
6. Native and non native invasive plants
7. Wildlife
8. Play

The SWOT analysis below links through to the SMART aims in Section 2.4 by:

- ♣ Building on the strengths identified
- ♣ Maximising the opportunities
- ♣ Strengthening weaknesses
- ♣ Eliminating threats

The aim of the SWOT analysis and SMART aims are to provide the group with basic information about the park from which they can develop their own more specific ideas for each theme and each area. The information is not prescriptive, allowing opportunity for ideas to be firmly shaped through consultation with the community and stakeholders.

2.3.1 Paths	
Strengths	Weaknesses
Paths through the park link the various elements together as well as providing short cut/through paths for other users. They are well used	Some paths are overgrown and impassable. The varied path surfacing materials can make access more difficult for some users.
Opportunities	Threats
Chance to create network of well signposted, easy to use paths that provide recreation, health benefits and that encourage more people to walk and use the park	Encroachment of weeds leading to paths becoming unusable. Not being able to surface sections of path with suitable materials will render the paths unusable in the long term

2.3.2 Trees	
Strengths	Weaknesses
Wide range of different tree species and ages of trees providing habitats and improving biodiversity. Trees are protected by a Tree Preservation Order	Not sure about the condition of the trees. Has a tree survey been undertaken? Are there any diseases present?
Opportunities	Threats
To create an arboretum and improve the range of trees in the Park. Opportunities to create an orchard within the park Create a woodland and individual tree management plan	Damage to mature trees caused by disease, vandalism, weather etc Not being allowed to undertake works to trees due to TPO's/Conservation Area/planning restrictions

2.0 Aims and Objectives

2.3.3 Grass and Wildflower Areas

Strengths	Weaknesses
Large expanses of sloping ground providing space for wildflower meadows that would be very visible from Greaves Road	The potential cost of implementation and maintenance in the first 3 years
Opportunities	Threats
To create colourful and varied meadows that will not only look beautiful but attract a range of insects improving biodiversity within the park	The potential cost of implementation and maintenance in the first 3 years

2.3.4 Signage and Interpretation

Strengths	Weaknesses
Park has a range of interesting features and routes which could be interpreted to benefit park users and maximise visits	Too much signage and/or different styles of signage can make the park appear cluttered and uncoordinated and hard to understand
Opportunities	Threats
To create marked walks around the park; to highlight cut-throughs and links with adjacent places of interest. Also potential to map the park and have this available online, on a leaflet and on interpretation	Initial cost of purchasing signage Consent from landowners/planning to erect signage The potential for vandalism and the prohibitive costs of replacing damaged signage

2.3.5 People

Strengths	Weaknesses
A wide range of existing users and strong friends group	Different user groups might have different/opposing requirements of the park which could be difficult to coordinate and bring in line
Opportunities	Threats
To bring together groups of users in different tasks around the park and arrange working parties and regular meetings to bring users together	The time implication for volunteers of regular meetings and arranging events and activities Risk that opposing groups can't find a middle ground and agree actions
Opportunity and threat —consulting with local community and park users re future of the park. There are great opportunities to encourage new group members to help shape the park but there are also concerns that more vocal members of the community could stymie progress	

2.0 Aims and Objectives

2.3.6 Native and Non Native Invasive Plants

Strengths	Weaknesses
Dense cover of some weeds can provide excellent habitats for wildlife	Overgrown areas can threaten paths, make the park feel unsafe and look unkempt. It can also threaten native species Areas of weeds encroaching paths and interesting features
Opportunities	Threats
To retain some areas of weeds as habitats but bring other areas into management and prevent spread of weeds in the future	Cost and labour involved in removal/eradication of large areas of weeds

2.3.7 Wildlife

Strengths	Weaknesses
Existing mature parkland could provide habitats for a range of wildlife	Removing too much 'scrub' improves the appearance of the site but can be detrimental to wildlife. A wider age range of trees and shrubs would be better for wildlife.
Opportunities	Threats
Increasing the range of habitats to support a wider range of fauna Providing bird and bat boxes and other 'animal homes' to further provide for wildlife on site. Potential to create a pond on site which will have significant wildlife benefit	Cost of purchase and/or maintenance requirements Risk of vandalism of built structures. Perceived risk of safety surrounding ponds in public places

2.3.8 Play

Strengths	Weaknesses
The play area is relatively new (built in 2007) and the equipment is fun for younger children	Poor surfacing; lack of paths to the actual play area mean it isn't accessible to all Range of equipment doesn't cater for all ages. Gates need replacing
Opportunities	Threats
Play area could cater for all ages of children and young people of all abilities if the range of equipment was slightly increased; if the play surfacing covered the entire site and if paths to the play area were created. Group likely to obtain funding for additional unit in play area	High costs of surfacing could be hard to raise funds for, especially as the current play area is not very old.

2.0 Aims and Objectives

2.4 SMART Aims for each theme

2.4.1 Paths					
Aim	Specific	Measurable	Achievable	Realistic	Timescale
Create a hierarchy of paths throughout the park	Keep desirelines open	Paths free from weeds	Easily, through regular mowing	yes	ongoing
	Surface popular paths with wood chip	Yes—lin.m of surfaced paths	Yes, if the group are assisted with some of the heavy physical work of moving the wood chip uphill to where required	Yes	ongoing
	create new paths in priority areas surfaced paths with stone to dust material	Yes—lin.m of surfaced paths	Will require grant funding for materials and possibly labour	Budget dependent	2016 onwards
Access to 'hidden' areas	Create new steps leading into Victorian Garden	Yes—new access created	Will require grant funding for materials and possibly labour	Budget dependent	2017?
	Create access to new viewpoint	New path and viewpoint created	Significant external funding required to create new path and view point	Budget dependent	2017?

2.4.2 Trees					
Aim	Specific	Measurable	Achievable	Realistic	Timescale
Undertake tree survey of entire park	Outcome will be the trees mapped and specific information about each one listed	yes	With assistance/support from a consultant	Yes, budget dependent	TBC depending on obtaining funding
Tree works	Comprehensive tree works undertaken including felling, crown lifting and pruning according to the results of the survey	yes	Would require major funding to undertake works. Also requires planning consent as TPO's in place and Conservation Area status	Yes, budget and planning dependent	TBC depending on funding and planning
	Remove all unnecessary tree supports/surrounds. Add supports where required	yes	Already have consent for this work	Yes, with time from volunteers	ongoing
Tree planting	Creation of arboretum (following and expanding on earlier plans) in the park	Yes, number of trees planted	Yes—could be sponsor a tree scheme. Requires LCC support and a planting schedule to be drawn up	Yes, also several funding pots available for trees	ongoing

2.0 Aims and Objectives

2.4 SMART Aims for each theme

2.4.3 Grass and Wildflower Meadows

Aim	Specific	Measurable	Achievable	Realistic	Timescale
Increase coverage of wildflower meadows and swathes of bulbs throughout the park for decorative effect and to benefit wildlife	Creation of new wildflower meadows around the park	Yes— counted in m2	Yes, might require support from LCC for the weedkilling of grass and rotoation and external funding for wildflower seed	yes	2015 ongoing
	Swathes of bulbs around the park	Number of bulbs planted	Yes, small costs involved to purchase bulbs	yes	2015 ongoing
	New planting in areas of park such as the Victorian Path and Middlewood	Number of new plants	Yes, costs involved in purchasing new plants	yes	2016

2.4.4 Signage and Interpretation

Aim	Specific	Measurable	Achievable	Realistic	Timescale
Provide comprehensive signage throughout the park including interpretation and directional signage	Provide at least 2 interpretation panels relating to history of the Park and flora and fauna	Yes—number of panels installed	Yes but will require research by FoGP and external grant funding	Yes, budget dependent	2016 onwards
	Provide directional signage to key places around the park	Yes, signposts will be provided where there aren't any	Yes but will require external grant funding	Yes, budget dependent	2016 onwards
	Maps of the park with 'you are here'	yes	Yes but will require external grant funding	Yes, budget dependent	2016 onwards
	New entrance signs at key entrances	Yes, qty of new signs	Yes but will require external grant funding	Yes, budget dependent	2016 onwards

2.0 Aims and Objectives

2.4 SMART Aims for each theme

2.4.5 People					
Aim	Specific	Measurable	Achievable	Realistic	Timescale
Involve more people in the park	Hold a range of community activities which are promoted locally	Yes—take registers on the day and record numbers of volunteers	Yes but likely to require support from LCC and/or grant funding for external trainers and materials	yes	2016 onwards
	Involve local schools and scouts in specific activities	Yes—take a register of numbers of children involved	Yes but likely to require buy in from teachers and scout leaders as well as the group arranging suitable activities. Support from LCC? Small grant required for materials and insurance	yes	2015 onwards
	Work placements / Community Payback	Yes—number of participants on each activity/ event	Yes, likely to require support from LCC, project manager and funding for materials	yes	2016?
Recruit more regular volunteers to FoGP	Local promotion and flyers	Yes—record membership of the group on a yearly basis	Yes—low costs involved for printing and distributing flyers and leaflets	yes	2015 onwards

2.4.6 Native and Non Native Invasive Species					
Aim	Specific	Measurable	Achievable	Realistic	Timescale
Manage areas of scrub, invasive species and weeds	Areas of vegetation encroaching paths and features regularly cut back/dug up	Yes, will be apparent from the paths being usable	Yes, with volunteer time and a strimmer/ brush cutter and support from Lancaster City Council	Yes, budget dependent	Ongoing
	More invasive weeds treated with appropriate chemicals	Will be able to see difficult areas of weeds get smaller, then disappear over time	Yes but likely to require grant funding and training and/or assistance from LCC	Yes, budget dependent	Starting in 2016 after volunteers have received training and funding for materials
	Some areas of scrub retained for wildlife	'Wild' areas to be highlighted on a plan	Retain existing overgrown areas	yes	ongoing

2.0 Aims and Objectives

2.4SMART Aims for each theme

2.4.7 Wildlife					
Aim	Specific	Measurable	Achievable	Realistic	Timescale
Create more wildlife habitats	Install bird and bat boxes	A measurable quantity installed	Workshop activity for the community?	yes	First boxes installed in 2015, then ongoing
	Create habitat piles	Pin point on a plan the location of the piles	No costs involved, just labour	yes	First piles created in Spring 2016 after winter tree and shrub works
	Retain overgrown areas of brambles	'Wild' areas to be highlighted on a plan	Retain existing overgrown areas	yes	ongoing
	Plant more bulbs, wildflower meadows and understory shrubs	Measured per m2, or quantity	Small costs involved initially for plant material	yes	Starting in 2015 and ongoing
	Plant edible hedgerows around the park	Measured by qty of plants or lin.m of hedgerow	Yes, relatively small costs of plants and group labour	Yes	Starting in 2016 and ongoing
	Create new wildlife pond (s)	M2 of new pond created	Yes, budget dependent	Yes	Towards the end of 2016, funding permitting

2.0 Aims and Objectives

2.4 SMART Aims for each theme

2.4.8 Play					
	Specific	Measurable	Achievable	Realistic	Timescale
Extend and improve current play area	Install more equipment for wider age range	Qty of new units installed	Yes, consultation and budget dependent	yes	2017?
	Resurface entire area with continuous play surface	Total m2 resurfaced	Yes, budget dependent	yes	2017?
	Install drains in and around play area	Lin.m of drains installed and measurable improvements to quality of land	Yes, budget dependent	yes	2016?
	Improve access to play area with new macadam paths	Measured per m2, or lin.m, linked to existing macadam path network	Yes, budget dependent	yes	2016?
Creation of 'official' informal play areas around the park	Creation of mapped areas around the park which are set aside specifically for play	Qty of informal play areas	Yes, small outlay of costs required	Yes	Late 2015 onwards

3.0 Action Plan

3.1 Action Plan for each area identified within the park

The group have split the park up into easily identifiable areas. These are different in character and make up and the intention is that each area will be treated differently. This will add interest to the park and split it into more manageable tasks for maintenance.

The different areas are listed over the next few pages, with actions split into the 8 themes identified earlier. These are colour coded to correspond with the Conceptual Masterplan (see Appendix 4.3).

3.1.1 Beech Woods (£1,450)					
Theme	Action	Priority	Lead	Notes	Estimated Cost
Paths	Keep desirelines open and surface any well used/boggy areas with wood chip	low	FoGP	This area has been left as ownership was uncertain. However, it is now clear that much of this area is part of the Council so work can be undertaken	G.I.K. (if wood chip can be provided free and moved around site to where needed)
Trees	See section 3.1.9				
Grass and wildflower meadows	Establish swathes of bulbs and/or wildflower plugs in this area	low	FoGP	External grant funding to cover cost of bulbs/seeds/plugs	£200
Signage and interpretation	Potential to provide information re beech woods	low	FoGP	Include on general site interpretation/maps	Included elsewhere
People	Involve local people and groups in bulb planting events throughout the autumn each year	low	FoGP	External grant funding to cover cost of bulbs that can be used for the community?	£500
Native/non native invasive species	Ensure areas of scrub do not encroach the site through regular mowing and weeding	low	Lancs City Council	Ongoing process though current budge restraints means this isn't guaranteed going forward	G.I.K.
Wildlife	Planting bulbs will provide nectar for bees etc	low	FoGP		See above (grass and wildflower)
Other	Provide seating in woodland area (formal and/or informal seating)	low	FoGP with support from Lancs City	External grant would be required to purchase seats and labour to install them. Also labour to site any log seats gifted by Lancs City Council	£750 (for 1 new formal seat). Other logs seats would be G.I.K.

3.0 Action Plan

3.1.2 Community Garden (£4,950)

Theme	Action	Priority	Lead	Notes	Estimated Cost
Paths	Maintain the wood chip path through the site	medium	FoGP	As required	G.I.K. (if wood chip can be provided free and moved around site to where needed)
Paths	Create hard surfaced section of path/boardwalk at boggy area	medium	FoGP	Improve access through creating 3m section of firm surfaced path/boardwalk over boggy area	£250
Trees	See section 3.1.9				
Grass and wildflower meadows	Establish wildflower areas and plant bulbs/plugs around the garden	low	Lancs City / FoGP	External grant funding to cover cost of bulbs/ground preparation/seed/plugs for initial creation?	£200
Signage and interpretation	Provide an interpretation panel in this area about the species found here	low	FoGP	External grant funding required to cover the costs of the design, manufacture of the panel and installation	£1500
People	Involve local people and groups in events in the garden throughout the year	low	FoGP	External grant funding to cover cost of materials and plants that can be used for the community? Events can include litter picking, bramble bashing and planting	£500
Native/non native invasive species	Manage certain areas of invasive weeds to keep the paths and main areas clear	low	FoGP	Retain some areas of weeds such as brambles as they provide good habitats and foraging. Training in spraying to treat weeds?	£500
Wildlife	Creation of habitat piles around the garden will benefit wildlife	low	FoGP	ongoing	G.I.K.
Other	Installation of informal log seats	medium	Lancs City / FoGP	Costs are for new seats and installation. Could be done cheaper via G.I.K.	£500
Other	Create management plan for this entire area to inform activities	medium	FoGP/ Lancs City	Include ecological information in plan	G.I.K.—use expertise in group?
Other	Incorporate Informal play area within Community Garden	Medium	FoGP	Set aside specific area for this	G.I.K. using donated plants
Other	Create natural boundary around community garden	medium	FoGP/ Lancs City	Decide on type of fence with Lancaster City Council and raise funds to install	£1,500

3.0 Action Plan

3.1.3 Informal play (£2,200)

Theme	Action	Priority	Lead	Notes	Estimated Cost
Paths	n/a				
Trees	See section 3.1.9				
Trees	Plant new trees/shrubs to create new wild play areas and opportunities for den building	low	FoGP	Hazel coppices and willow will allow children to create their own dens and play inc screening of pub car park. Use large branches/trunks for creative play	£500
Grass and wildflower meadows	n/a				
Signage and interpretation and leaflet	Produce a simple sign to be erected in each of the 'informal play' areas and leaflet to identify locations around park	low	FoGP/ Lancaster City	Too prescriptive? Or will it help the group manage the overall site?	£500
People	Hold Forest School type activity days for children throughout the year	medium	FoGP	External grant funding could be required for officer time and materials. Den building, willow weaving etc	£1,200 (4 events in one year)
Native/non native invasive species	Manage certain areas of invasive weeds to keep the paths and main areas clear	low	FoGP	Retain some areas of weeds as they provide good dens and places to play	G.I.K.
Wildlife	Leaving 'wild' areas will have added benefit for wildlife	low	FoGP / Lancs City	Areas to be created/left in suitable locations around the park	G.I.K.
Other	Invite Play Wardens to hold free play sessions in the park throughout school holidays	medium	FoGP/ Lancs City	Events to be promoted via local schools, the group, local libraries etc	N/A
Other	Identify areas in the park to set aside for informal play	high	FoGP/ Lancs City	Work with community through consultation to identify suitable sites for informal play in the park	N/A

Notes

Six areas have so far been identified as being ideal for informal play. These already provide a varied range of play benefits which can be enhanced with small interventions. Community consultation will help identify other areas for informal play around the park and confirm if those already identified are appropriate.

3.0 Action Plan

3.1.4 Victorian Path (£28,150)

Theme	Action	Priority	Lead	Notes	Estimated Cost
Paths	Paths to be surfaced with wood chip	medium	FoGP	LCC to provide wood chip from felling works elsewhere throughout the city	G.I.K. (if wood chip can be provided free and moved around site to where needed)
Trees	See section 3.1.9 (NB community to decide extent of 'opening up' this area through tree works)				
Grass and wildflower meadows	Embankments to be planted with shade loving plants	low	FoGP	External grant funding required for plants. Suggest the planting be appropriate to the Victorian theme	£750
Signage and interpretation	Provide an interpretation panel for this area	low	FoGP	include old photographs of the site and information about the original owners etc. External grant funding required	£1,500
People	Training opps & volunteer days to be included	low	FoGP	Grant funding would allow a programme of managed activities to be delivered	£7,500
Native/non native invasive species	Manage invasive species here such as Rhododendron ponticum	Medium	FoGP	Ongoing maintenance will be required to retain site as a more formal site	G.I.K.
Wildlife	New planting and understorey to encourage wildlife	low	FoGP	Nesting boxes to be provided in mature trees. Could be built in workshops with community/pupils/ young people	£200 for kits.
Other	Stone walls to be rebuilt along path	low	FoGP/ Lancs City	Could be a training opportunity for local people/ Community Payback?	£10,000
Other	New stone steps access	low	FoGP/ Lancs City	External grant funding required for materials and labour	£7,500
Other	Plant hedgerow/ screening for adjacent cottages	medium	FoGP	Appropriate species to be chosen for wildlife, impenetrable nature, suitable height and low maintenance. Labour G.I.K.	£700 materials only.

3.0 Action Plan

3.1.5 Viewing Area (£20,150)

Theme	Action	Priority	Lead	Notes	Estimated Cost
Paths	Create new ramped path leading to view point. Path likely to require surfacing with stone to dust.	Medium	FoGP	Likely to require external grant funding to cover costs of excavation; cut and fill; surfacing and edging/revetments and seating.	£15,000
Trees	Undertake felling and tree pruning works to retain open views. Remove self seeded saplings	low	Lancs City Council	Again, grant funding possibly required to undertake major works	£2,000
Grass and wildflower meadows	Make good ground around path edges and around view point once created	medium	FoGP	Possibility of gathering seed and storing or buying new wildflower seed to make good areas of disturbed ground at path edges and around view point	£150
Signage and interpretation	Potential to create panoramic interpretation panel showing key features in the view. A photo from the location would be suitable	medium	FoGP	Likely to require external grant funding to cover costs of an interpretation panel, though key views and features could be identified by a member of the group	£1,500
People	Consultation with adjacent residents re suitable location for viewing area	medium	FoGP	Simple plan/sketch to be produced which will show residents what is proposed. Exact location will be flexible and screening can be provided.	G.I.K.
Native/non native invasive species	Areas of brambles and scrub to be cut back/pulled out from around viewing area	Medium	FoGP	Ongoing maintenance will be required to ensure the scrub doesn't overtake the viewing area	G.I.K.
Wildlife	n/a				
Other	Installation of 2 seats	medium	Lancs City / FoGP	Costs are for new seats and installation. Could be done cheaper through G.I.K	£1,500

3.0 Action Plan

3.1.6 Middlewood (£4,500)

Theme	Action	Priority	Lead	Notes	Estimated Cost
Paths	Paths to be surfaced with wood chip	medium	FoGP	LCC to provide wood chip from felling works elsewhere throughout the city	G.I.K. (if wood chip can be provided free and moved around site to where needed)
Trees	See section 3.1.9				
Grass and wildflower meadows	Embankments to be planted with bulbs and shade loving plants; some slopes left for informal play	low	FoGP	External grant funding could be required for plants. Suggest the planting be appropriate to the Victorian theme	£1,000
Signage and interpretation	Provide information re species in this area and wildlife	low	FoGP	Include on general site interpretation/maps? Not sure if it would need a separate panel	£1,500
People	Involve local people and groups in bulb planting events throughout the autumn each year	low	FoGP	External grant funding to cover cost of bulbs that can be planted by the community?	Included elsewhere
Native/non native invasive species	Ensure areas of scrub do not encroach the site through regular weeding	low	Lancaster City Council	Ongoing process though current budget restraints means this isn't guaranteed.	G.I.K.
Wildlife	Plant a variety of bulbs which flower throughout the year providing nectar for bees.	low	FoGP	Could plant some woodland understorey plants in this area too which will add more colour and year round interest as well as being good for wildlife	£1,000
Other— Informal play	Plant a range of suitable, robust shrubs and plants to encourage informal play	medium	FoGP	Also ensure that the visual appearance of this area is enhanced with the planting as it is a key entrance into the park	£1,000

3.0 Action Plan

3.1.7 Formal Play

The group raised funds to create the original play area in 2007 and are keen to continue to work to extend this area. It is an integral part of the park which draws many users.

3.1.7 Formal Play (£91,700)					
Theme	Action	Priority	Lead	Notes	Estimated Cost
Paths	Create surfaced paths leading to play area from main access points	medium	Lancaster City Council	Required to conform to DDA	£10,000
Paths (surfacing)	Resurface play area with more suitable surfacing allow better access for all	medium	Lancaster City Council	Required eventually to conform to ROSPA standards	£50,000
Trees	n/a				
Grass and wildflower meadows	n/a				
Signage and interpretation	Suitable signage erected at play area entrances with play area rules/guidance and also with detail about accessibility	low	Lancaster City Council	Required eventually to conform to ROSPA standards/DDA/Council's own policy. This is already underway	n/a
People	n/a				
Native/non native invasive species	n/a				
Wildlife	n/a				
Other	Install new play equipment to diversify range	medium	FoGP / Lancs City	More challenging units for older children to increase the appeal of the site. Equipment to be chosen through consultation with the community	£15,000
Other	Install new drainage in and around play area to divert water	medium	FoGP / Lancs City	New herringbone land drainage system connected to main drains elsewhere on site to improve drainage at play area	£15,000
Other	Gate repair	high	Lancs City	Repair/replace damaged gates which no longer self close	£1,700

3.0 Action Plan

3.1.8 Wildlife Ponds (£20,000)

Theme	Action	Priority	Lead	Notes	Estimated Cost
Paths	Create new informal wood chip paths leading to new pond from main access points	low	FoGP	Required to conform to DDA	G.I.K. (if wood chip can be provided free and moved around site to where needed)
Trees	n/a				
Grass and wildflower meadows	n/a				
Signage and interpretation	Suitable signage erected around pond regarding use and safety	low	Lancs City / FoGP	Signs to be clear and easy to read and give guidance about behaviour around ponds	£500
People	n/a				
Native/non native invasive species	n/a				
Wildlife	n/a				
Other	Creation of actual pond in open area of the park	low	FoGP	Use 'Bentomat' style liner which creates good watertight seal. Pond to have ledges to cater for wildlife. Location and size to be determined through consultation	£15,000
Other	Planting around pond	low	FoGP	Suitable planting of grasses, wildflower plugs and small shrubs around pond to cater for wildlife	£1,500
Other	Natural edging to pond	low	FoGP	Use of large stone boulders, earth mounds, shrubs and reclaimed logs to create boundary around pond for safety	£3,000

Note

There are few things better for wildlife than ponds. All birds and mammals require water, especially during dry spells. Amphibians need water to breed and many insects lay their eggs in water. There are understandable safety concerns around ponds. However, statistics do show that two thirds of accidents involving children under 6 happen in residential settings rather than in public places.

It is proposed that any ponds created in Greaves Park would be designed with safety in mind. Methods can include use of large boulders, earth mounds, use of a wet approach and planting around pond edges to restrict access to the water's edge as well as increasing the value to wildlife. Easy to understand signage would also be installed around the ponds.

3.0 Action Plan

3.1.9 Wider Park SECTION 1 OF 2 (£73,550)

Theme	Action	Priority	Lead	Notes	Estimated Cost
Paths	Key paths used by schools to be surfaced with a stone to dust material	medium	FoGP	Grant funding would need to be secured to cover the cost of the materials (and ideally the labour and machinery required).	£5,000
Paths	Well used paths to be surfaced with wood chip	medium	FoGP	LCC to provide wood chip from felling works elsewhere throughout the city	G.I.K. (if wood chip can be provided free and moved around site to where needed)
Paths	Desirelines to be kept mown and easy to access	low	Lancaster City Council	Three times a year as required/when other mowing takes place	G.I.K.
Trees	Survey trees throughout Park and produce Tree Management Plan.	High	Lancaster City Council	Look into possibility of grant to pay for specialist consultant to undertake initial report + mapping	£7,000 (?)
Trees	Undertake felling and tree works which are highlighted as urgent	High	Lancaster City Council	Again, grant funding possibly required to undertake major works	£10,000 (?)
Trees	Continue to monitor progress of trees each year	Low	FoGP	Basic training provided by LCC/through a grant	£500 for training
Trees	Remove unnecessary tree surrounds and supports. Add new supports where required	medium	FoGP	Labour provided free from group. Costs are purely for costs of extra materials for new supports (if required)	£200
Trees	Installation of new feature trees to create arboretum	low	Lancs City / FoGP	Tree species and plan to be created and agreed with Planners before proceeding	£7,500
Grass and wildflower meadows	Establish large wildflower meadows and meadows containing bulbs and plugs around the park	low	Lancs City / FoGP and Lancashire CC	External grant funding to cover cost of bulbs/ground preparation/seed for initial creation?	£10,000
Signage and interpretation	Provide information re species/meadows	low	FoGP	Include on general site interpretation/maps	£1,500
Signage and interpretation	Install 3 large new entrance signs at main entrances to park along Greaves Road and one small sign by 5th Scouts	medium	FoGP / Lancs City	Signage to be coordinated to create uniform and welcoming appearance to Park	£7,600

3.0 Action Plan

3.1.9 Wider Park SECTION 2 OF 2 (£73,550)

Theme	Action	Priority	Lead	Notes	Estimated Cost
Signage and interpretation	Supply and installation of directional signage around park	low	Lancs City / FoGP	Fingerposts, plaques etc at key locations	£3,750
Signage and interpretation	Identifying signs for the trees within the arboretum (including new and existing trees)	low	Lancs City / FoGP	Standard hard wearing and durable signs either fixed to trunks or branches	£1,000
People	Involve local people and groups in bulb planting events throughout the autumn each year	low	FoGP	External grant funding to cover cost of bulbs that can be planted by the community?	£500 (some G.I.K. for bulbs)
Native/non native invasive species	Ensure areas of scrub do not encroach the site through regular mowing and weeding	low	Lancaster City Council	Ongoing process though current budget restraints means this isn't guaranteed.	G.I.K.
Wildlife	Plant a variety of bulbs which flower throughout the year providing nectar for bees	low	FoGP	Choose a range of species which flower at different times of the year for maximum benefit	See 'people' above
Other	Installation of 5 seats and 5 picnic tables	medium	Lancs City / FoGP	Costs are for new seats, picnic tables and installation. Could be done cheaper through G.I.K or bulk buying to reduce costs	£8,000
Other	Installation of signage to identify key/interesting trees	low	FoGP	Suitable signs to be securely installed to/around trees or adjacent to the trees (incorporating QR codes?)	£2,500
Other	Produce tree walk leaflet	low	FoGP	Paper copies and electronic leaflet to be available for users so they can explore the park by its unusual trees. Use QR codes where appropriate	£1,000 (design G.I.K)
Other	Create permanent orienteering trail/fitness trail through park with signs on existing features and new timber posts	low	FoGP	Work with orienteering clubs to design trail and erect suitable signage around site. Some of posts to incorporate measured distances too	£2,500 (cost of new posts and signs)
Other	Repair and reinstate boundary features	low	FoGP and Lancs City	Repair damaged boundary walls and restore entrance pillars around park. Some walling works could be undertaken as a training scheme	£ 5,000

3.0 Action Plan

3.1.10 General Actions for the Group SECTION 1 of 2 (£1,350)

Theme	Action	Priority	Lead	Notes	Estimated Cost
Social media/ website	Creation of basic website to promote group and events	medium	FoGP	Can simply be one page with photos of events and dates of upcoming events	£500
Social media/ website	Set up Twitter account	high	FoGP	Very useful for sharing photos of events and promoting the group. Can also copy in funders and partners to spread the message	Free
Social media/ website	Keep Facebook page updated regularly and continue to post photos and dates of upcoming events	ongoing	FoGP	Group are already active with this but need to maintain regularly	Free
Events	Continue to host and promote community and activity days in the park	medium	FoGP	These can be as simple as inviting families and the community in bulb planting or tree planting events. Group to take register of attendance to strengthen future funding bids	£550 (inc insurance costs)
Events	Tidy up days	ongoing	FoGP	Group are already active with these events but continue to hold them and invite the community to get involved. Tweet and share photos from event on Facebook. Ask for register/ sign in sheet to be taken to strengthen future funding bids	No cost
Events	Social events such as ceilidhs	2016 onwards	FoGP	Group to resurrect social events to help raise funds for ongoing costs such as insurance	£100 room hire (?)

3.0 Action Plan

3.1.10 General Actions for the Group SECTION 2 of 2 (£1,350)

Theme	Action	Priority	Lead	Notes	Estimated Cost
Consultation	Continue to ask for feedback from the community about specific areas of the park inc. play area	2015	FoGP	Costs shown are for room hire. Consultation can be carried out at events. Lancaster City Council will cover the cost of printing	£200
Links	Create and strengthen links with partners and potential partners (Bowerham School, Lancs Wildlife Trust, Scouts, Lancaster Green Forum, University)	ongoing	FoGP	Invite specific groups to the events and/or create events specific to particular groups	No cost
Recruitment	Group to recruit new members through consultation and events on site	2015 ongoing	FoGP	Group to recruit for specific roles to strengthen the group such as someone to be responsible for social media and the website	No cost

3.0 Action Plan

3.2 Resources and Finance Required

3.2.1 Actions Requiring Grant Funding

1.	Beech Woods	£ 1,450
2.	Community Garden	£ 4,950
3.	Informal play	£ 2,200
4.	Victorian Path	£ 28,150
5.	Viewing Area	£ 20,150
6.	Middlewood	£ 4,500
7.	Formal Play	£ 91,700
8.	Wildlife Ponds	£ 20,000
9.	Wider Park	£ 73,550
10.	General actions	£ 1,350

Estimated total cost of all capital actions - £248,000

Items of work highlighted in the action plans which potentially require grant funding:

- ♣ Tree Survey
- ♣ Tree felling and tree works to make trees safe
- ♣ Training for FoGP in identifying damage and disease in trees
- ♣ Tree planting to create arboretum
- ♣ Cost of bulbs, wildflowers, shrubs and plants
- ♣ Interpretation and signage—design time, manufacture and installation costs as well as leaflet production costs
- ♣ Costs for preparing ground for wildflower seeding (weedkiller and rotovation done by contractor)
- ♣ Training and materials for spraying areas of weeds?
- ♣ Activity days throughout the park—a yearly programme of events and activities for all ages from seasonal play events, to litter picks and bulb planting
- ♣ Wood chip for surfacing paths (unless this is provided for free from the local authority)
- ♣ Training, tools and materials to rebuild walls and create steps in Victorian Garden. Possibility some of this could be done by volunteers
- ♣ Stone to dust paths—cost of materials and labour. Again, this could a training project but it still requires management
- ♣ Viewpoint—cost of creation of cut and fill, excavations, surfacing of path and viewing area and interpretation
- ♣ Hedging and screening at viewpoint and rear of cottages—materials and plants
- ♣ Seating, signage and picnic tables
- ♣ New play equipment for formal and informal play
- ♣ Orienteering and health walk trails

NB—Lancaster City Council officers are currently looking at an option to provide a training package for the community on trees (identifying issues and regular inspections) which could bring down the costs of tree works.

3.0 Action Plan

3.2.2 Potential Revenue Costs

Other items of work which might have a cost and/or legal implication which need taking into consideration are:

- ♣ Planning consent is likely to be required for the following works:
 - Tree felling (due to the park being within a Conservation Area and the trees being additionally protected by Tree Preservation Orders)
 - Works that materially affect the park such as works in the ‘Victorian Garden’ and general works to create hard surfaced footpaths
 - The Viewing Area is likely to require planning consent
 - Possibly erecting signage and notice boards (depending on the size of these and the location)
- ♣ Professional fees if tendering is required by grant funders for elements of the work. Tender documents including a schedule of work/Bill of Quantity, detailed drawings, layout plans, risk assessments and specifications may be required
- ♣ Costs of outside trainers and/or officer time has been included within the costs for events but the costs presume that the actual project will be overseen and managed by someone from the Friends of Greaves Park.
- ♣ Other costs that might need to be considered by the group are for printing costs, leaflets, questionnaires etc.
- ♣ Annual insurance

3.2.3 Potential Grant Funders

1. Landfill Tax General—Mainly Biffa Award / Veolia Trust / LEF. Please look at ENTRUST for more ideas.
2. Section 106 through Lancaster City Council
3. Lancashire Environmental Fund (LEF)—up to £30,000 for environmental projects.
4. Dirtworks (LEF)—up to £20,000 for projects at a total value of £25,000
5. BIG Lottery Fund—Multiple programmes of funding available which may apply. Awards for All currently the most eligible (see below).
6. Awards for All—up to £10,000 for community focussed projects
7. Possibly English Woodland Grant Scheme (though this is about to be re-launched in April 2015 so will need to see if this is suitable for the Park)
8. Shared Heritage/Our Heritage from Heritage Lottery Fund
9. Small grants from Lancashire County Council Member Grants of up to £500—Contact The Environment Directorate
10. Woodland Trust free tree packs
11. The Tree Council
12. Green Partnership Awards of up to £500
13. Locality—Multiple programmes of funding available which may apply.
14. Comic Relief
15. Garfield Weston Foundation
16. Community Action Fund—Lancashire Police and Crime Commissioner
17. Daiwa Foundation—Funds links to strengthen links with Japan (University Students)
18. NESTA
19. BBC Children in Need
20. Esmee Fairbairn Trust
21. Lancaster Green Open Spaces—£1000
22. The Conservation Volunteers
23. Wind Farm Community Benefit—up to £5,000 per year
24. Lancaster Community Fund—£500
25. Galbraith Trust—£1,500

3.0 Action Plan

3.2.4 Potential sources of Gift in Kind resources

1. Princes Trust—Labour
2. Community Pay Back—Labour
3. Army—Labour
4. Local school—Light touch planting
5. Scouts—Light touch labour and planting
6. Lancaster Green Forum—Labour (Tree Felling)
7. Lancaster University and the University of Cumbria —Labour
8. Materials from Lancaster City Council
9. Lancashire Wildlife Trust—Potential survey work and advice on tree surveys and grasslands (and sometimes labour)
10. Duke of Edinburgh Award Scheme at Ripley Academy
11. Nursing School
12. Lancaster and District Conservation Volunteers (part of TCV)



4.0 Appendices

4.1.1 Brief History

Greaves House was originally built as a private house in 1843 for Samuel Simpson Esq. later known as Rev. Simpson. The large stone property is a Grade II listed building in the Jacobean Revival style and forms a large suburban villa of considerable presence, character and appearance. It is surrounded on all sides by wooded parkland with open boundaries and used as public amenity space.

The park sits within the Greaves Conservation Area and the parkland is subject to a Tree Preservation Order (242).

The house was occupied by Rev. Simpson for a number of years before he moved his family to the Isle of Man. In 1861, Dr Edward Dennis De Vitre, a well regarded physician moved into Greaves House. Dr De Vitre was the visiting physician to the Moor Hospital, the county asylum. De Vitre was instrumental in setting up and running the Royal Albert Hospital.

On 2nd March 1874 Rev. Simpson sold his property to Richard Leeming. Leeming had a large family with four sons and five daughters

When Richard Leeming passed away in 1888, he left the property in the hands of Trustees (his brother and three of his sons). His will allowed the Trustees to sell Greaves House after the death of his widow Eliza on the condition that two or more unmarried daughters would be permitted to live there rent-free if they wished.

The City Council bought Greaves House and lands from the Trustees of Richard Leeming on 14 January 1938 after Mary Eliza died in January 1937 leaving her last sister Mary Frances who was no longer permitted to live in the house. It is not known how the house was used during the next 20 years, although there are rumours it was head office for a few companies and a post office. It has also been confirmed that the grounds were used during the Second World War (1939-1944) for food production.

In 1958, the house and approximately one third of the parkland was leased to the County Council and the following year the local paper announced that up to date facilities for children with learning difficulties were now to be provided at Greaves House.

The lease to the County ran out in 1993 and Whitbread PLC took on a 999 year lease for the house and 2.1 acres of land in 1996 and opened the Brewers Fayre pub, now confusingly called Greaves Park.



1.0 Current Situation

Parkfield House was built around 1840 by Edward Paley. We know in 1851, William Satterthwaite lived here with his family of 8 children.

By 1861, the property was occupied by John Stamp Burrell, a County Magistrate. In 1871, James Williamson Snr bought the property and surrounding land. He was followed by Charles Blade in 1891, and James Williamson Wearing in 1913. His brother, Richard Williamson Wearing lived here until 1938. The property was bought by Lancaster Corporation in 1951. Later, the cottages and stables were used by the City Council Parks Department and the house was rented by a firm of architects. It is now owned and operated as a offices and the cottages and two of outbuildings have been bought and converted into dwellings. The third remains unconverted and in a poor state of repair.

The Greaves was built after 1853 and housed Edward Graham Paley from 1861—1881, with his widow continuing to live there till 1891. According to records, Archibald William Malcolm was living here till 1937. In 1946 the City Council converted the building into 5 flats.

Other new buildings were built in and around the site during the 20th century, changing the nature of the parkland. Greaves Park Nursery was built in 1946 in the former walled garden (though this has now been demolished). Abbeyfield House (to the north of the site) was opened in 1989 and has now become Pointer House Student Accommodation.

Bowerham Primary School was built in 1899 with the extension being built in the 1970s after land adjacent to the school was bought by Lancashire County Council in 1969. A new extension to the school was built in 2014.

Two scout huts have also been built, the 53rd Lancaster Scout hut being built in 1979.

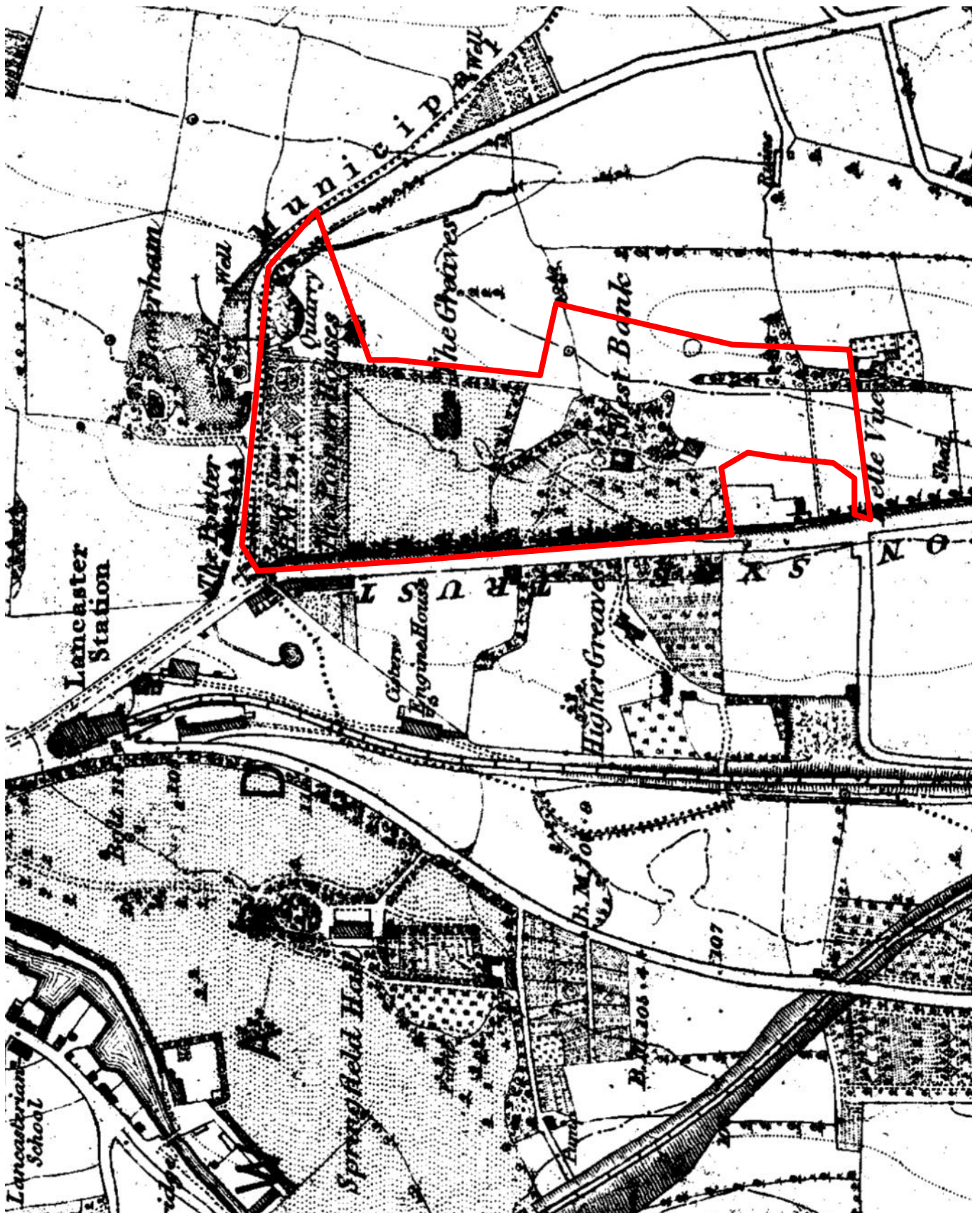
Thanks to Lancaster City Museum for their help in gathering historical material about the history and development of Greaves Park.



4.0 Appendices

4.1.2 Historic Map

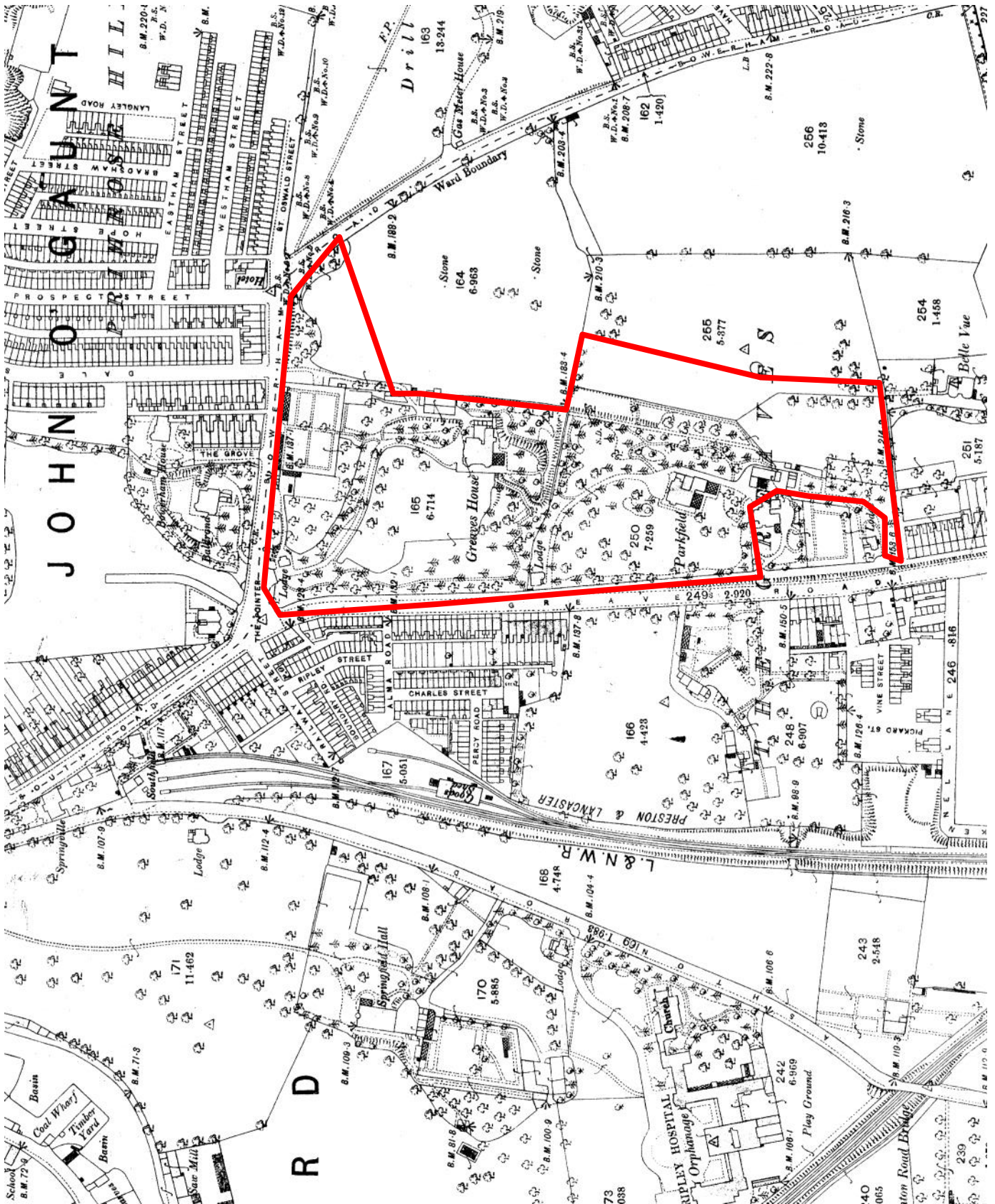
Below is an image taken from Lancashire County Council's Mario website of the park area
© Crown Copyright 1845. Thanks to ICT Services at Lancashire County Council for providing this image.



4.0 Appendices

4.1.2 Historic Map

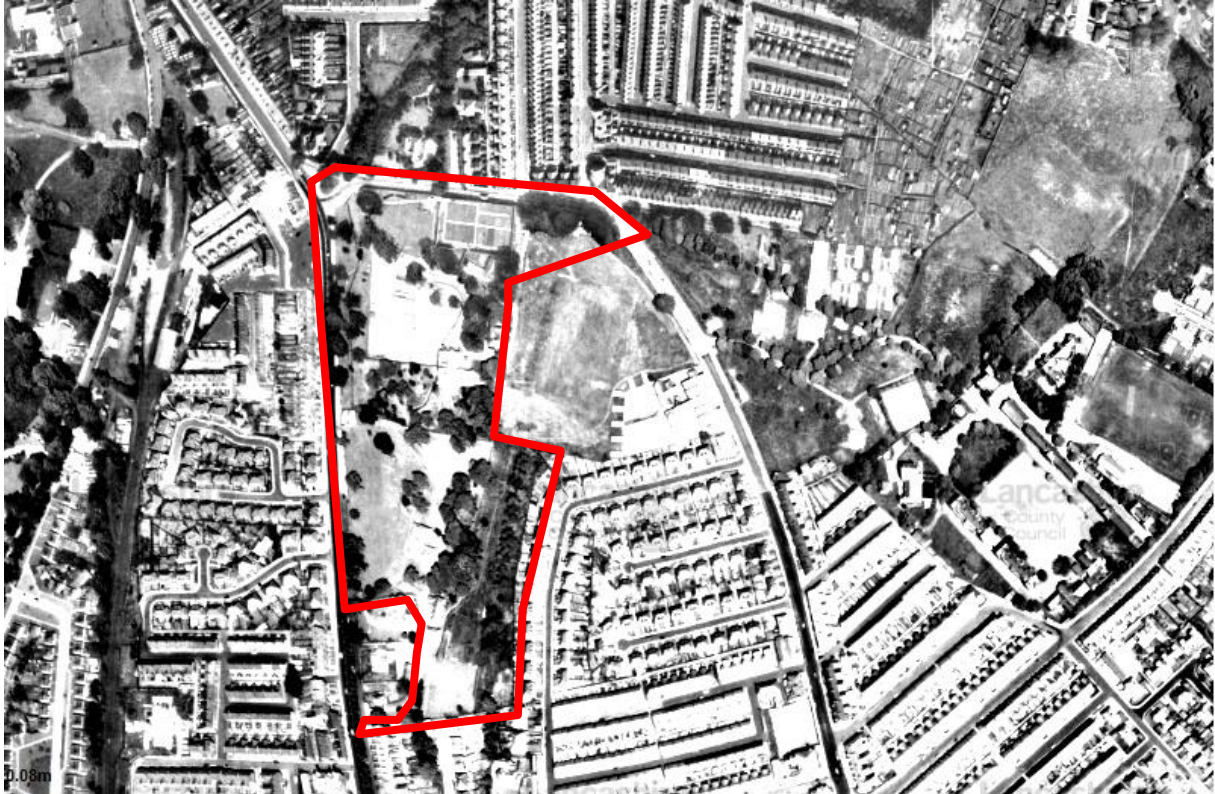
Below is an image taken from Lancashire County Council's Mario website of the park area
© Crown Copyright 1890. Thanks to ICT Services at Lancashire County Council for providing this image.



1.0 Current Situation

4.1.3 Aerial Photographs

The aerial images below show the changing face of Greaves Park:
The image below is taken from Lancashire County Council's Mario website of the park area c. 1960's.
© Crown Copyright. Thanks to ICT Services at Lancashire County Council for providing these images.



The

image below is taken from Lancashire County Council's Mario website of the park area as it is now.



4.0 Appendices

4.2 Evaluation Tools

4.2.1 Initial Baseline Data

The evaluation process will need to start by obtaining baseline data about the park. There are several reasons for this, including using as evidence for obtaining external funding; to better understand what the issues are within the park so the proposed activities can be shaped to address these; what the priorities are within the park and so the impact of projects can be assessed upon completion.

There are several methods that can be used to acquire this information:

Questionnaire

Consultation might include creating a basic questionnaire and asking volunteers to ask park users, visitors, local residents, businesses and the school for their thoughts about the park as it is now. The questions can be about specific areas and about the park generally. Some examples might be:

- ♣ How often do you use the park now?
- ♣ What would make you use the park more?
- ♣ Do you feel safe in the park?
- ♣ What do you like about the park?
- ♣ What do you dislike about the park?
- ♣ Friends of Greaves Park want to create a viewing area—do you agree?
- ♣ Friends of Greaves Park want to repair walls and undertake tree felling in what was the formal garden to the rear of Parkfield House to give an indication of its former glory. Do you agree? Please give comments.
- ♣ Friends of Greaves Park want to create ponds in the park for wildlife. What are your thoughts on this?

The questionnaire could also ask for people to give contact details if they want to get involved with the Friends of Greaves Park, specific activities or want to be kept updated on progress or events. Lancaster City Council will do the consultation and be supported by the group.

The aim of the initial surveying would be to determine the approximate number of park users at present, what people use the park for, when they use it and the 'good and bad bits' of the current park. From this, it will be easier to measure the success of subsequent projects within the park.

Observation / Case Studies

Data can also be obtained through observation such as taking photographs at the start of the project so you can see the physical transformation of the park as projects are completed. Visual 'before and after' photos really help to show park users and the wider community exactly what transformations have taken place and can encourage more people to get involved.

Upon completion of specific activities within the park, a case study can be a beneficial of quickly getting across the success of the work that has been carried out. This can also be used to get support for the next phase of work or the next project.

Targeted Interviews

It is appropriate to contact some specific users directly as they will be most affected by any works in the park. This would include the manager of The Greaves; the businesses at Parkfield House; the Head at Bowerham Primary School; Ripley Academy, Scout leaders at the 2 Scout Huts and residents who live within and at the edges of the park. Their experiences of living and working within the park will be invaluable in shaping the future of the park and their support a necessity to the success of the project.

4.0 Appendices

Press

The local papers and social media (Facebook and Twitter) can be a key way of widely disseminating information about the proposals or immediate task at hand and a way of getting more volunteers for specific events or activities.

4.2.2 Specific Feedback

It would also seem appropriate to suggest that more detailed feedback be sought for specific projects, before implementation and after. This could take the form suggested previously, but including a more detailed plan of what is proposed for a specific area.

For example, as already discussed, the residents closest to the proposed viewing area will need to be consulted specifically regarding the design, location and screening of the viewing area so a plan and sketches of the proposed area would be useful, along with questions relevant to this particular proposal. The feedback will be used to tweak the design and location of the site to ensure it will be appropriate and well designed to suit as many stakeholders as possible.

In most instances, there will be conflict between different users of how they want/think the park should be used and maintained. The key is to record all the differing opinions to ensure a balanced view has been taken and that the proposals have support from major stakeholders (such as Lancaster City Council and those most affected by the proposals).

4.2.3 Evaluation of a project

Upon completion of a specific element of the project, it is a good idea to evaluate the success of it. This can again be with questionnaires of users and interviews with key stakeholders; through observation and photos and through social media. The evaluation process will determine public opinion on the finished project, how the project was carried out, things that could have been done differently etc.

This feedback will be useful for the group moving onto the next project but will also prove to funders that the group value public opinion and use it to shape their work. It will also be beneficial evidence that improvements within the park have increased user numbers and improved visitor experience.

Questions that can be asked (depending on the type of project completed) could include:

- ♣ Now that the project is complete, do you use the park more often? Why/Why not?
- ♣ Do you feel safer in the park now?
- ♣ Do you think this area of the park is more well used now?
- ♣ Have the works improved this area of the park for wildlife?
- ♣ Do you think this project has improved the park generally for users?

Other methods of evaluation are those used to obtain the initial baseline data, such as observations, targeted interviews and gathering evidence from social media.





Consultation of what people want in Greaves Park December 2014

More play equipment in the park 29

Benches 28

Signage/Notice board for map of park and to promote events in the park 26

Map of park, showing all the paths and the different areas of the park 22

General bins, rather than just dog mess bin 30

Planting in the Wild Flower Meadow/Community Garden, including bee friendly plants/fruit trees 28

Accessible path up to hole in the wall/Bowerham School 27

View Point 24

Natural play areas 29

Opening up of the Old Victorian Path 23

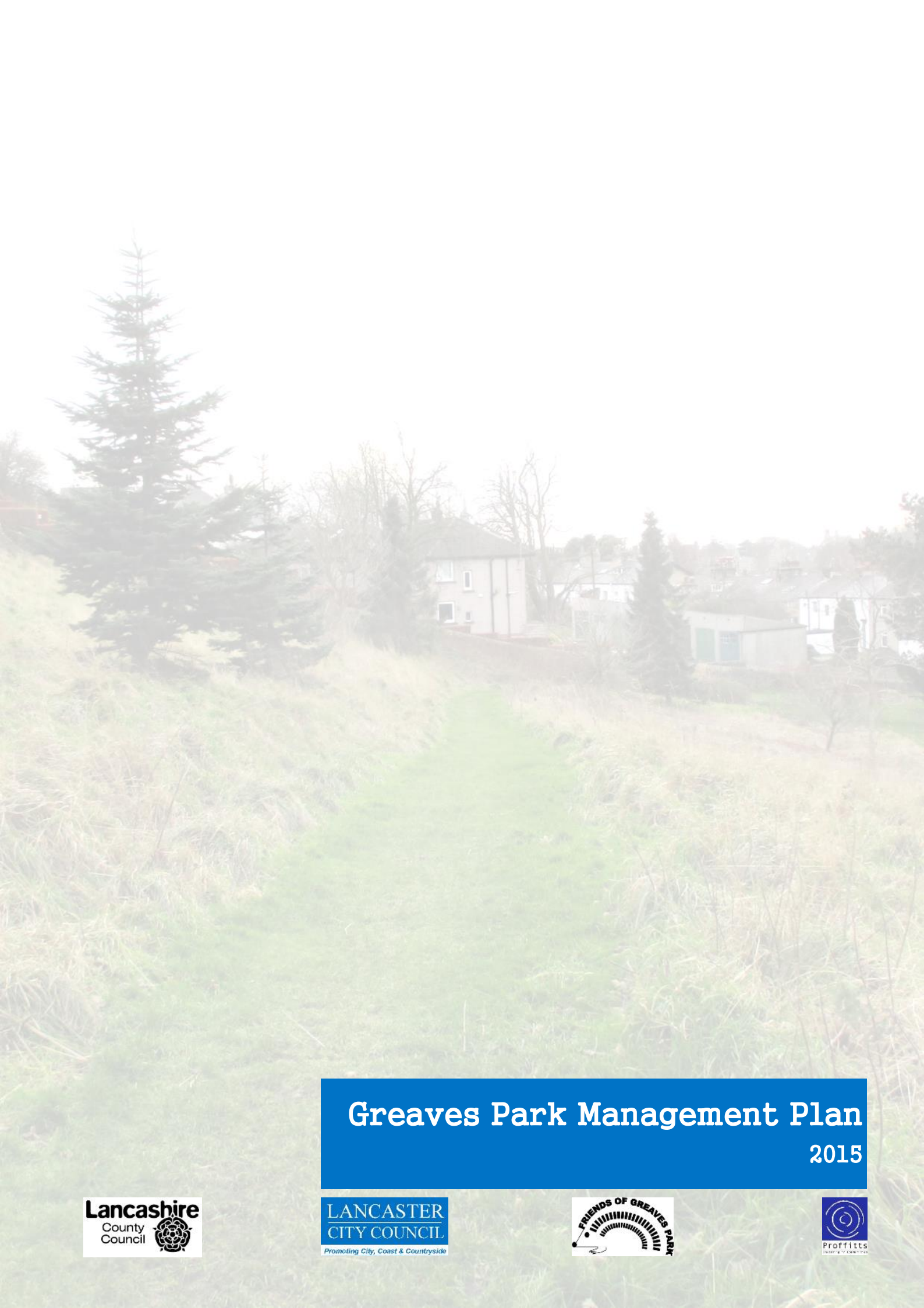
Any other ideas:- many and varied!

40 people took part in the consultation, which was carried out by asking people in the park, by email to members and via our Facebook page.

4.0 Appendices

4.4 Conceptual Masterplan





Greaves Park Management Plan

2015

