

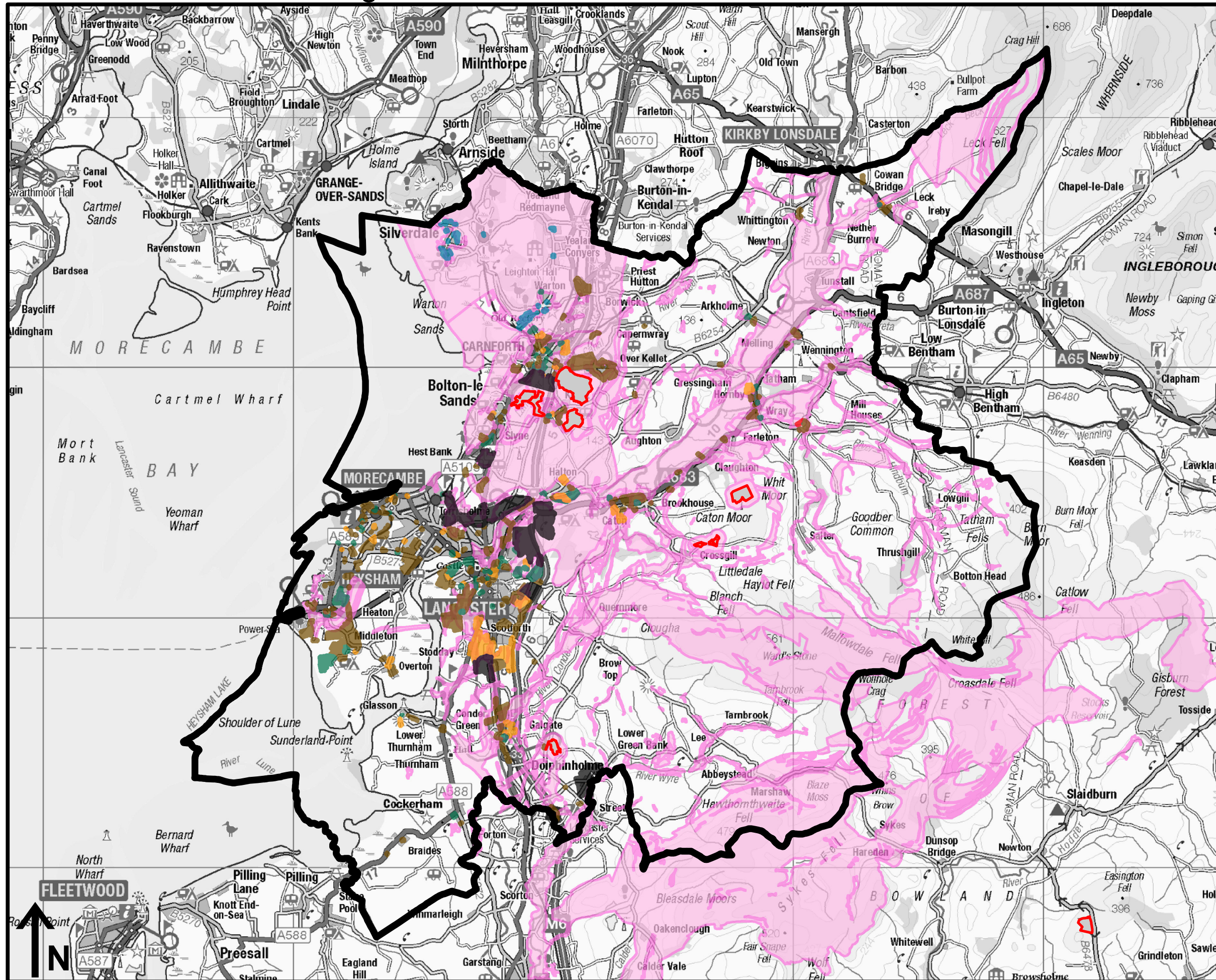
# Minerals and Waste safeguarded areas



Promoting City, Coast & Countryside

Lancashire County Council is the responsible planning authority for minerals and waste in Lancaster district.

This map shows minerals safeguarded areas that were allocated through the county council's Site Allocation and Development Management Policies Local Plan (adopted September 2013), and minerals sites with planning permission.



- District boundary
- Permitted minerals sites
- Minerals safeguarded areas
- Strategic sites
- Undeliverable sites
- Arnside & Silverdale AONB
- 1-5 Year Phase
- 6-10 Year Phase
- 11-15 Year Phase