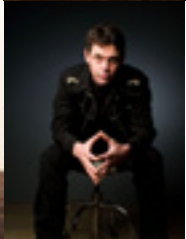




the
platform
Morecambe







Welcome to the Platform

a dedicated live performance venue converted from a restored Edwardian railway station on Morecambe Promenade.



CAPACITY
900



The Platform is Morecambe's premier venue for arts and entertainment, conferences and special events.

The venue holds a standing audience of 900 and has seating capacity of 350 and is accessible to all visitors with full level access for wheel chair users and those with disabilities. The bar and toilets are all on ground level.

A range of hospitality options are available with a private bar and catering can be provided from afternoon teas to buffets.

It is conveniently located for Morecambe town centre and

is opposite the promenade with magnificent views across Morecambe Bay to the Lake District hills. The bus and train stations are close to hand and there are many car parks nearby.



VERSATILITY OUTDOOR HERITAGE



Entertainment

The venue offers great versatility and hosts a wide programme of events including live music, comedy, dance, theatre, cabaret, children's shows, exhibitions and community events. See the current Platform brochure for the latest listings. There is also the forecourt and gardens if you prefer to take your event outside.



Exhibitions, Conferences and Meetings

The Platform is the perfect place to stage your exhibition, conference or meeting. The glass roof floods the venue with daylight, perfect for exhibitions and daytime events. From public consultation exercises to tea dances, a warm welcome is guaranteed from our knowledgeable and friendly team.



Private functions

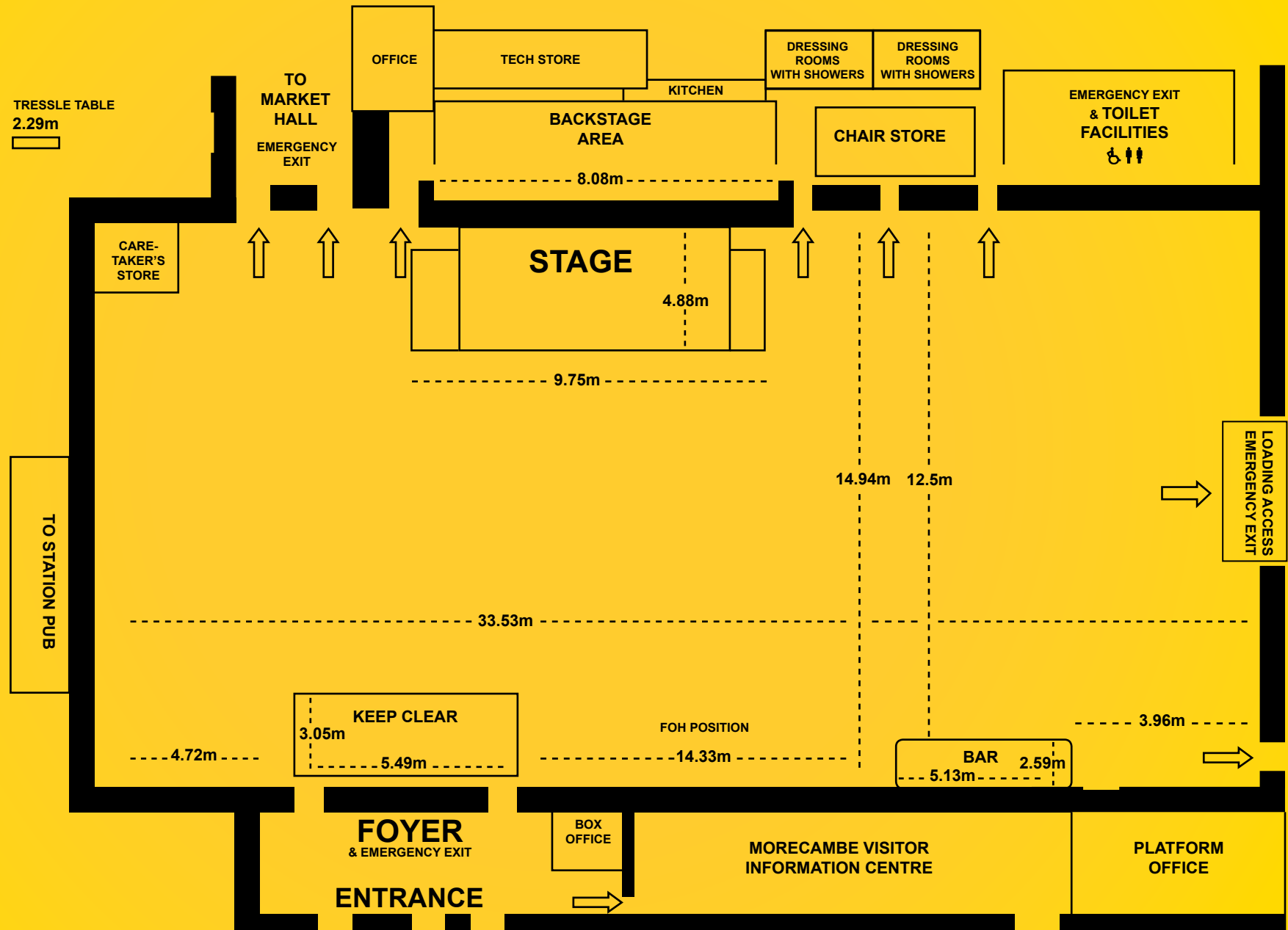
For personal celebrations, corporate functions and even wedding receptions, contact us to see how the Platform can tailor make your event into a truly special occasion.



“ THE BEST DISUSED RAILWAY STATION NOW USED AS A THEATRE IN THE WORLD ” ANDY PARSONS



Dimensions & Layout



The Tech Spec - The main performance space is an open area of 37.3m x 15m with a quality Granwood flooring system and a modular steel deck thrust stage in the centre. The stage can be tailored to requirements in terms of position, height, size and shape but regularly stands at 9.7m x 4.8m with black drapes as a backdrop.

There is a very useful back stage area measuring 11.7m x 4.4m. Both areas are covered by induction loop systems for the hearing impaired.

The Front of House mixing position is approx 7 meters from the front of the stage.

Speakers - The main Front of House system is an active 3 way system comprising 1 x GAE Mod21x15+horn and 1 x GAE 215L 2x15 sub either side of the stage. There are two pairs of EV Deltamax 1152 available for greater coverage. Four EV SX300 are flown above the stage for conference use.

Amplifiers - The FoH amplifiers are Camco Tecton and EV P3000.

Console - The FoH desk is an Allen & Heath GL2400 with 24 channels 6aux, 4 groups handled by a KT DN360 stereo graphic equaliser.

FoH Rack - Effects are taken care of by a Yamaha SPX990 and a TC M1 XL. There are 8 channels of compression by a Klark Technik Square One Dynamics unit and 4 Drawmer gates. This rack also contains CD and Minidisc players.

Lighting - 36 Source Four Parnells and 12 Source Four Profiles. This is a fixed rig on 3 trusses with no facility for additional fixtures.

The Platform has a glazed roof allowing natural light to flood the building with implications for stage lighting during daylight hours.

A LeMaitre Neutron Star hazer is available.

Monitors - The monitor mix is from FoH with 4 monitor mixes each driven by EV1250 amplifiers. There is a 31 band graphic equaliser for each monitor send. There are 4 T&M 15+horn wedges, 2 SS 12+horn wedges and a 15+horn drum fill.

Microphones

8x Shure SM58 3x Shure Beta 58A
3x Shure Beta 57A 2x Shure SM57
2x Sennheiser E845
1x Shure SM94 condensor mic
4x Beyerdynamic TGX10 Clipon
percussion mics

1x Beyerdynamic TGX-50 Bass drum mic
2x Beyerdynamic MCE85 condensor mics
2x Rode NT1A condensor microphones
2x Sennheiser hand held radio
microphones
1x Sennheiser beltpak and various lav/
headsets
4x BSS active d.i. boxes
6x Behringer active d.i. boxes
3x EMO passive d.i. boxes

Power supply - The stage is supplied by 2x 32amp single phase Ceeform sockets (one either side). Provision for ample 13amp mains sockets on stage. There is a further 32amp Ceeform at the FoH position on the same phase. There is one 63amps per phase supply on a 3 phase Ceeform at the rear of the stage.

Catering & Licensing - Kitchen facilities on site. Licensed bar from Monday-Sunday 11am - Midnight.

Box Office and promotions - Ticket sales are managed online, by phone and in the Visitor Information Centre. Marketing support is included.

Parking & Access - Private parking for artist and crew available. Access for tour buses by consent (overnight landline power available)

Directions

From the South

Leave M6 at Junction 34 and turn right onto the A683 signposted Lancaster. Bear left on the one-way system on the A6 signposted Heysham, Morecambe, City Centre. At traffic signals continue forwards onto the A589 signposted Heysham, Morecambe. Keep in left hand lanes and continue forwards on A589. At roundabout take 3rd exit onto A589 signposted Heysham, Morecambe. At roundabout take the 3rd exit onto the A589 Signposted Morecambe. At roundabout take the 2nd exit onto the A589. At roundabout take the 2nd exit onto the A589 signposted Carnforth. At T-Junction turn left onto the A589 signposted Central Promenade. Continue along the promenade for approximately one mile. The Platform is directly opposite the Midland Hotel.

From the North

Leave the M6 at Junction 35 at Carnforth. Take the A6 signposted Morecambe. Continue along Coastal Road/A5105 then onto Marine Road East/A589. The Platform is directly opposite the Midland Hotel.

For more information on the Platform, to make a booking or come for a tour of the venue, contact the team:

The Platform

Station Buildings, Marine Road Central
Morecambe, LA4 4DB

Telephone: 01524 582815 Box Office: 01524 582803

platformboxoffice@lancaster.gov.uk

www.lancaster.gov.uk/platform

Journey Times

LOCATION	TRAIN	COACH
London	3 hrs	7 hrs
Bristol	4 hrs	6 hrs 30 mins
Edinburgh	2 hrs 45 mins	8 hrs 45 mins
Glasgow	2 hrs 20 mins	7 hrs
Birmingham	2 hrs 10 mins	3 hrs 50 mins
Leeds	2 hrs 30 mins	4 hrs 30 mins
Sheffield	2 hrs 25 mins	5 hrs
Liverpool	2 hrs	4 hrs 45 mins
Manchester	1 hr 20 mins	2 hrs 55 mins
Blackpool	1 hr 20 mins	3 hrs 10 mins

Make a break of it

Contact the on-site Visitor Information Centre to arrange accommodation, for transport enquiries and to find out more about what's going on in Morecambe and beyond.

Morecambe Visitor Information Centre,
The Platform, Marine Road Central, Morecambe, LA4 4DB.

Tel: 01524 582808 morecambevic@lancaster.gov.uk

Open:

April-Sept: Mon-Sat 9.30am-5pm, Sun 10am-4pm.

Oct – Mar: Mon-Sat 9.30pm – 5pm.

Morecambe

Morecambe Visitor Information Centre
 Old Station Buildings, Marine Road Central, Morecambe, LA4 4DB
 T: 01524 582808 E: morecambevic@lancaster.gov.uk W: visitmorecambe.co.uk

Heysham



THE PLATFORM

Station Buildings
Marine Road Central
Morecambe
LA4 4DB

01524 582815

platform@lancaster.gov.uk
www.lancaster.gov.uk/platform

 /MorecambePlatform

 @theplatformlcc

**LANCASTER
CITY COUNCIL**

Promoting City, Coast & Countryside