

# Consultation Strategic Policies and Land Allocations Policy Maps

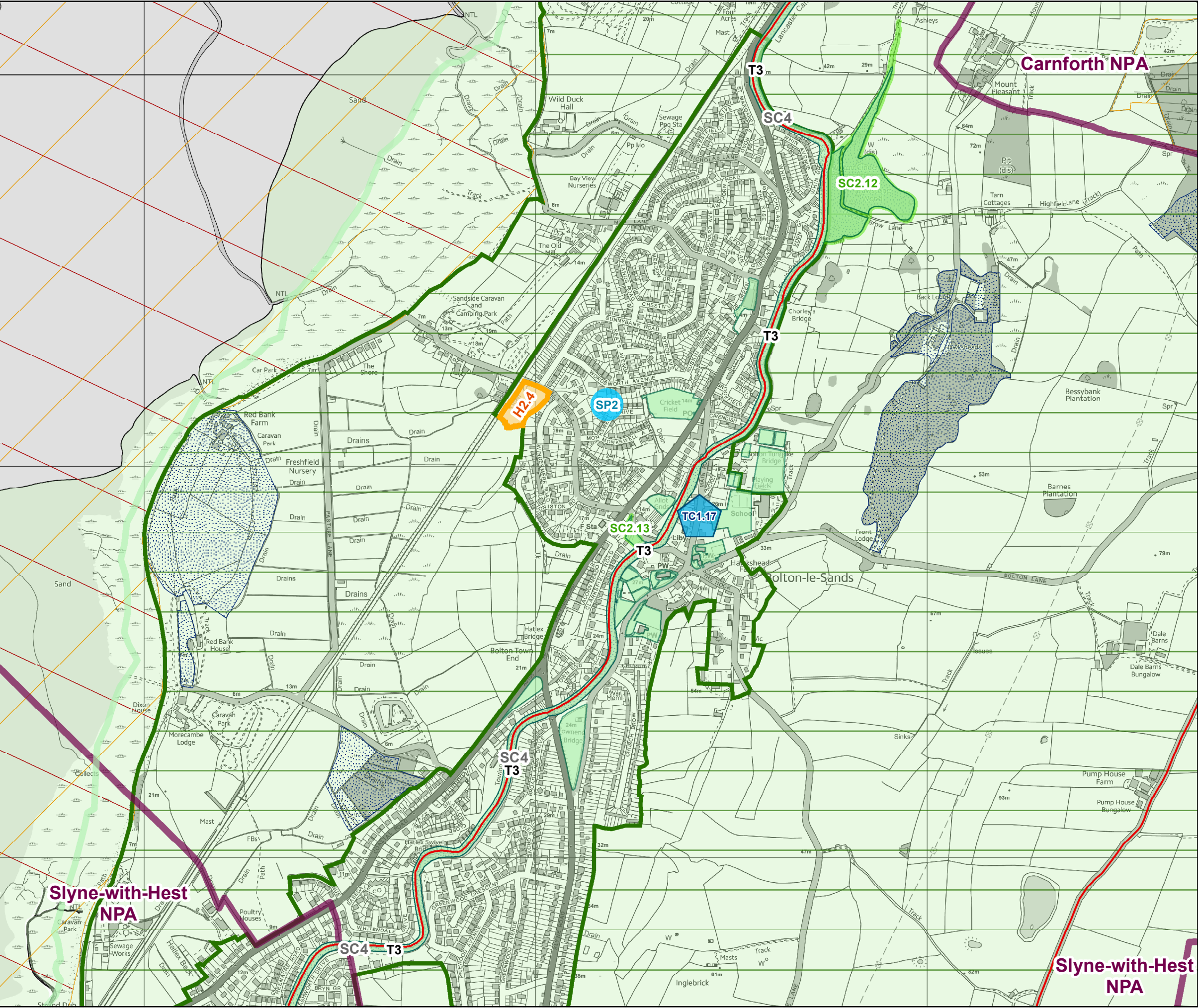
## Sustainable Settlements

August 2019

\*These designations are made separately to the Local Plan process and may be subject to change.

\*\*Please see the District Wide Policies Map for areas identified as Suitable for Wind Energy and Mineral & Waste areas.

Strategic Policies and Land Allocations Policies Map - Bolton-Le-Sands



**Legend**

**Housing Delivery**  
H2 - Rural Housing

**The Natural Environment**  
EN3 - Open Countryside  
EN4 - North Lancashire Green Belt  
EN7 - Environmentally Important Areas  
International\*  
National\*  
Regional\*

**Sustainable Communities**  
SP2 - Sustainable Settlements  
SC1 - Neighbourhood Plan Areas\*  
SC2 - Local Green Space  
SC3 - Open Space, Recreation and Leisure  
SC4 - Green Space Networks

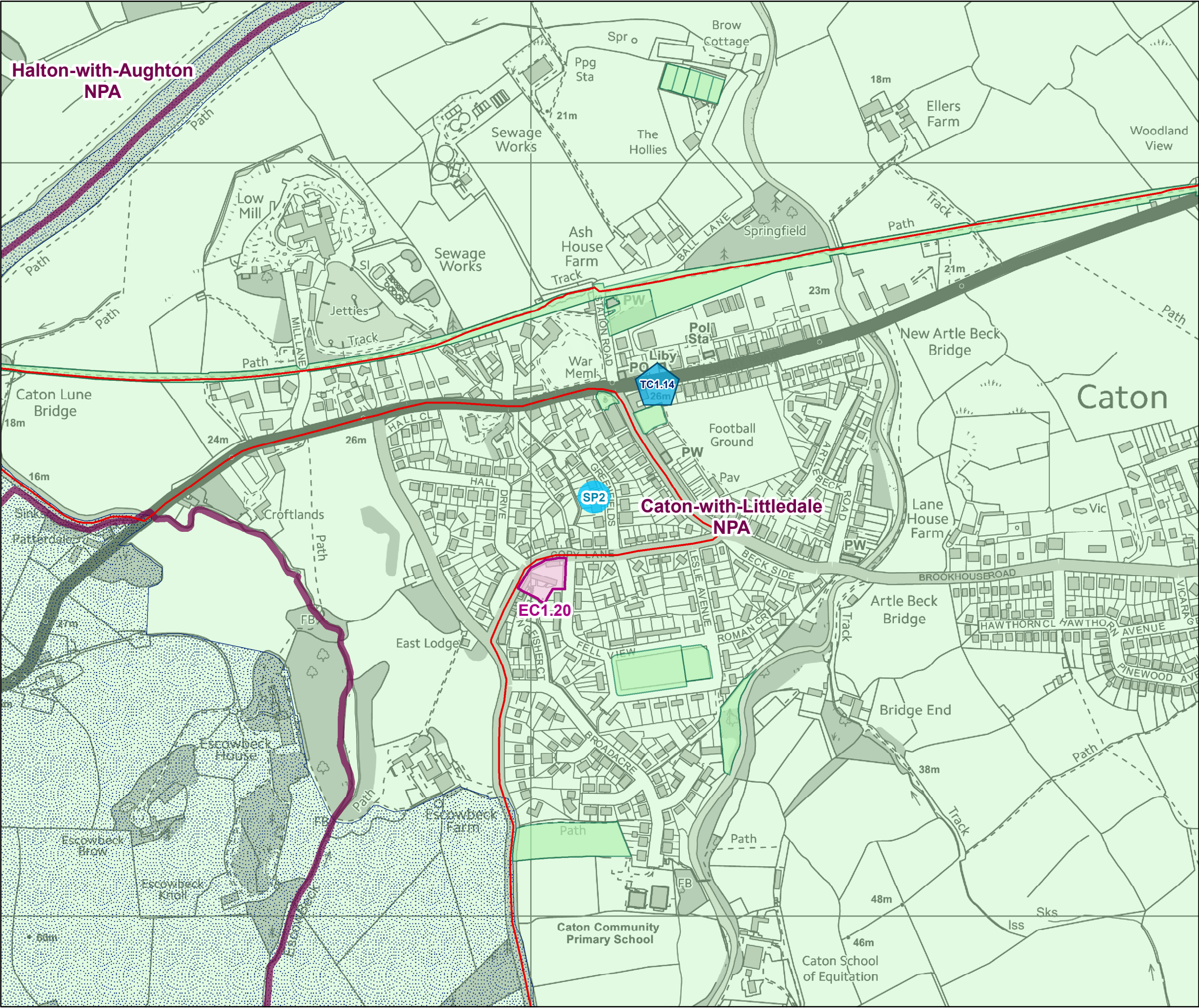
**Transport, Accessibility and Connectivity**  
T2 - Cycling Network  
Existing Cycle Route  
Aspirational Cycle Route  
T3 - Lancaster Canal

**Town Centres and Retailing**  
TC1 - Retail Hierachy for Lancaster District

0 0.25 0.5 1 Kilometers



Strategic Policies and Land Allocations Policies Map - Caton



Legend

The Economy & Employment

EC1 - Established Employment Areas

The Natural Environment

EN2 - Area of Outstanding Natural Beauty

EN3 - Open Countryside

EN7 - Environmentally Important Areas

International\*

National\*

Regional\*

Sustainable Communities

SP2 - Sustainable Settlements

SC1 - Neighbourhood Plan Areas\*

SC3 - Open Space, Recreation and Leisure

Transport, Accessibility and Connectivity

T2 - Cycling Network

Existing Cycle Route

Aspirational Cycle Route

T3 T3 - Lancaster Canal

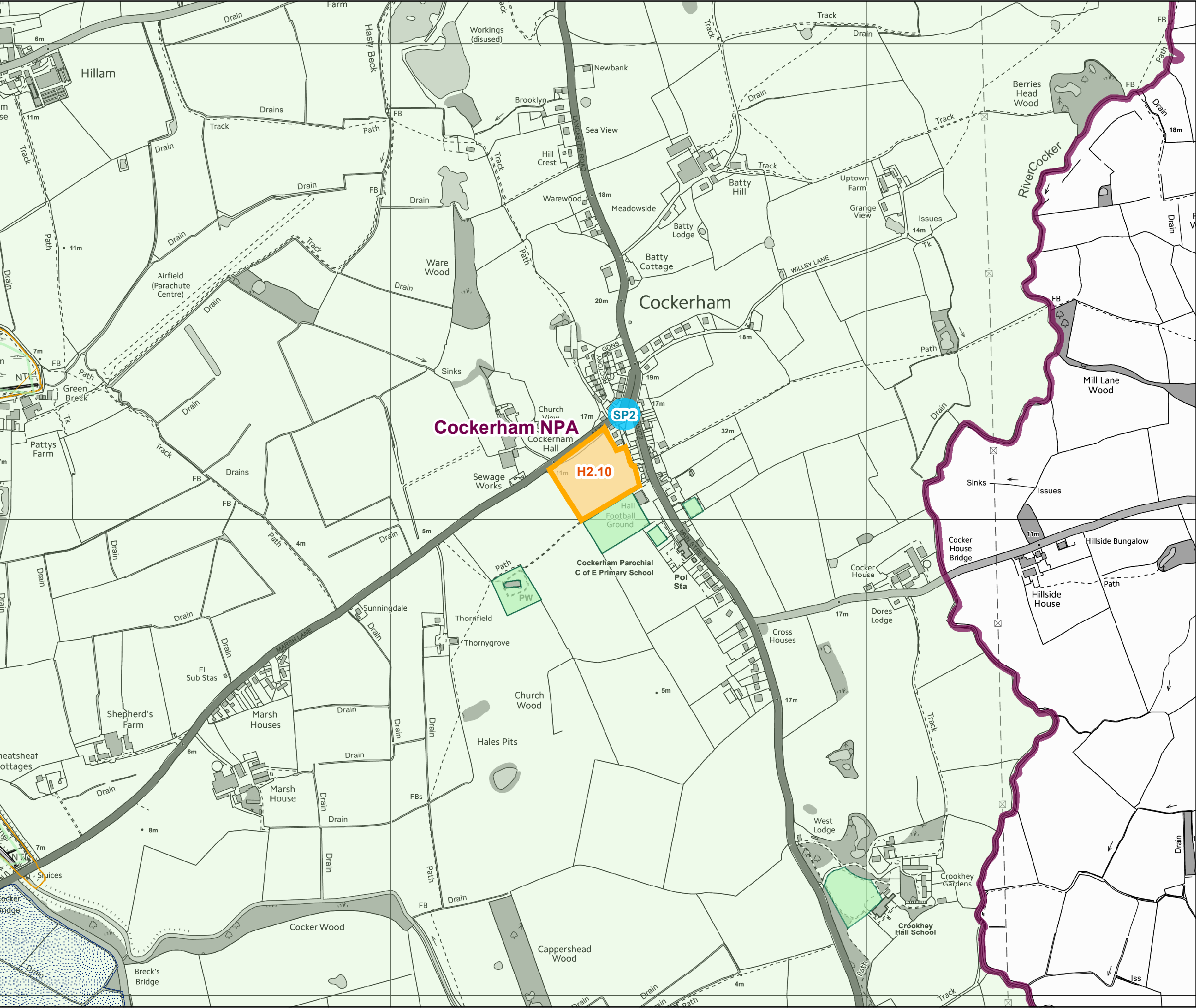
Town Centres and Retailing

TC1 - Retail Hierachy for Lancaster District





Strategic Policies and Land Allocations Policies Map - Cockerham



**Legend**

**Housing Delivery**

- H2 - Rural Housing

**The Natural Environment**

- EN3 - Open Countryside

**EN7 - Environmentally Important Areas**

- International\*
- National\*
- Regional\*

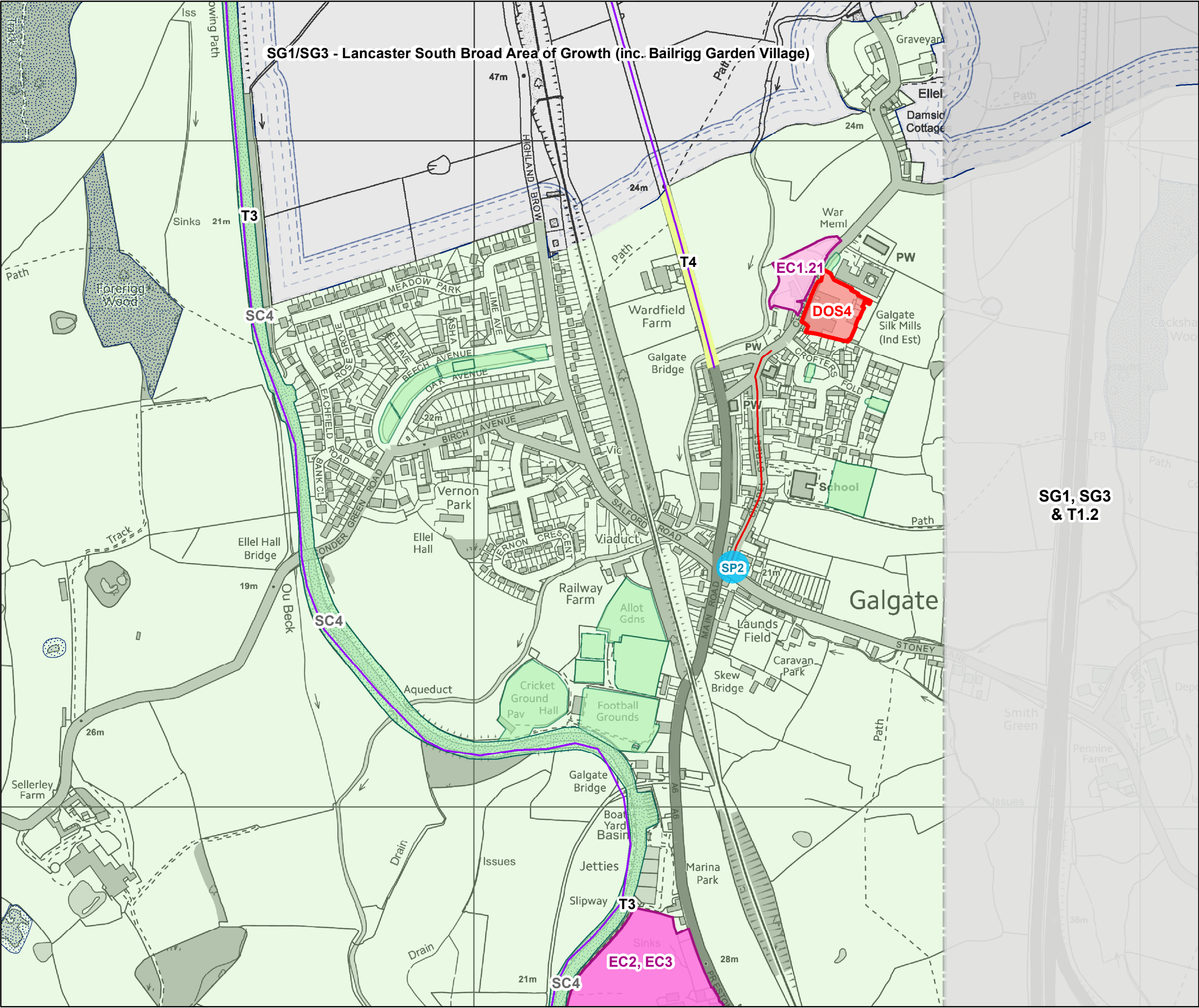
**Sustainable Communities**

- SP2 - Sustainable Settlements
- SC1 - Neighbourhood Plan Areas\*
- SC3 - Open Space, Recreation and Leisure





Strategic Policies and Land Allocations Policies Map - Galgate



**Legend**

**The Economy & Employment**

- EC1 - Established Employment Areas
- EC2 - Future Employment Growth
- SG1 - Bailrigg Garden Village Broad Area of Search

**Development Opportunity Sites (DOS)**

- Development Opportunity Sites (DOS)

**The Natural Environment**

- EN3 - Open Countryside

**Sustainable Communities**

- SP2 - Sustainable Settlements
- SC3 - Open Space, Recreation and Leisure

**Transport, Accessibility and Connectivity**

- T1.2 - Junction 33 Reconfiguration - Area of Search
- T2 - Cycling Network
  - Existing Cycle Route
  - Aspirational Cycle Route
- T3 - Lancaster Canal
- T4 - Public Transport Corridor

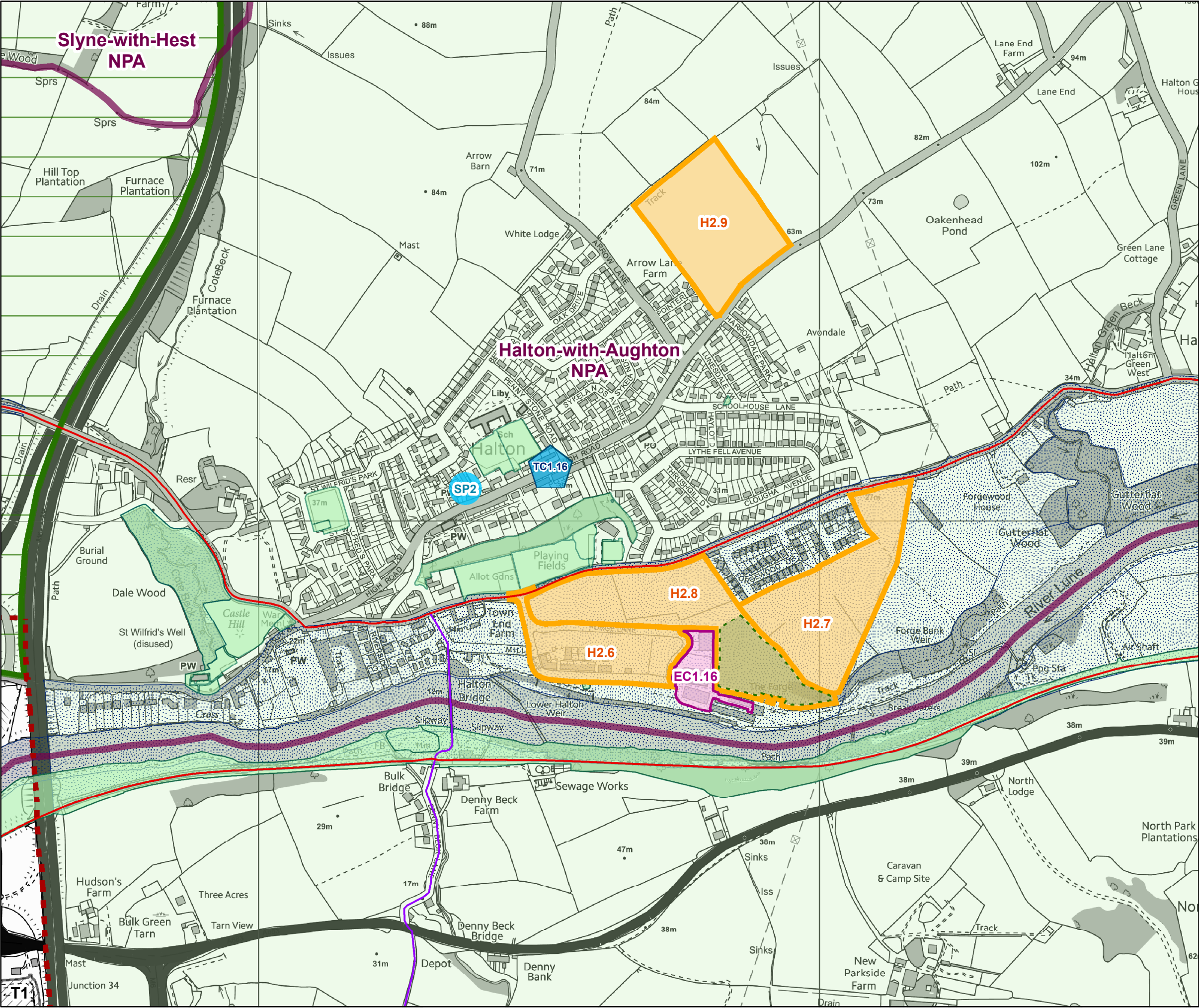
**Town Centres and Retailing**

- TC1 - Retail Hierachy for Lancaster District





Strategic Policies and Land Allocations Policies Map - Halton



**Legend**

**Housing Delivery**

- H2 - Rural Housing
- Open Space/Recreation Provision

**The Economy & Employment**

- EC1 - Established Employment Areas

**The Natural Environment**

- EN3 - Open Countryside
- EN4 - North Lancashire Green Belt
- EN7 - Environmentally Important Areas
  - Regional\*

**Sustainable Communities**

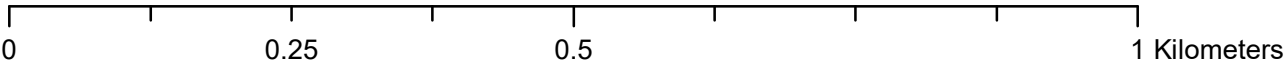
- SP2 - Sustainable Settlements
- SC1 - Neighbourhood Plan Areas\*
- SC3 - Open Space, Recreation and Leisure

**Transport, Accessibility and Connectivity**

- T1.1 - J34 Park and Ride
- T2 - Cycling Network
  - Existing Cycle Route
  - Aspirational Cycle Route
- T3 - Lancaster Canal

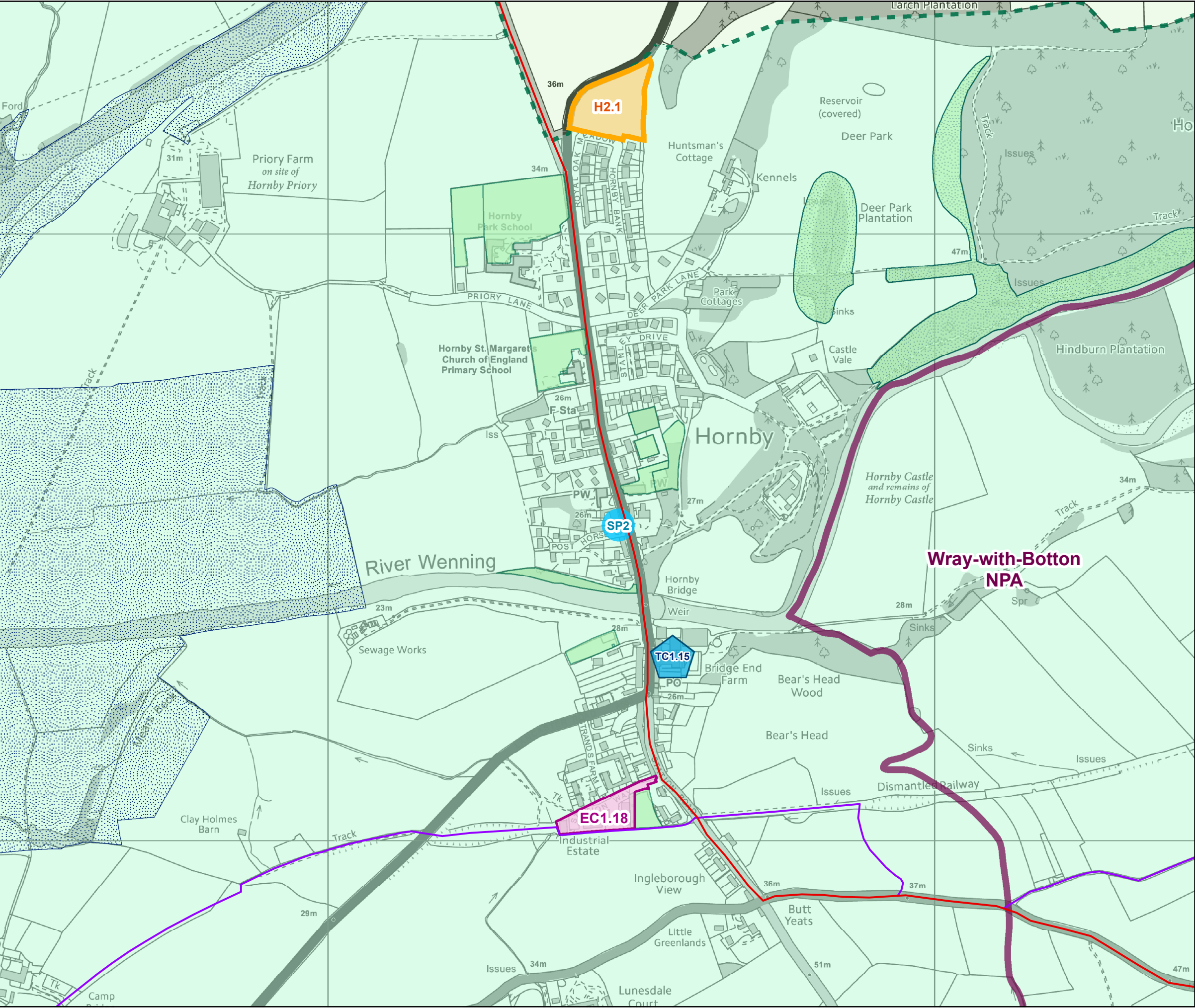
**Town Centres and Retailing**

- TC1 - Retail Hierachy for Lancaster District
- Urban Boundary





Strategic Policies and Land Allocations Policies Map - Hornby



**Legend**

**Housing Delivery**

H2 - Rural Housing

**The Economy & Employment**

EC1 - Established Employment Areas

**The Natural Environment**

EN2 - Area of Outstanding Natural Beauty

EN3 - Open Countryside

EN7 - Environmentally Important Areas

Regional\*

**Sustainable Communities**

SP2 - Sustainable Settlements

SC1 - Neighbourhood Plan Areas\*

SC3 - Open Space, Recreation and Leisure

**Transport, Accessibility and Connectivity**

T2 - Cycling Network

Existing Cycle Route

Aspirational Cycle Route

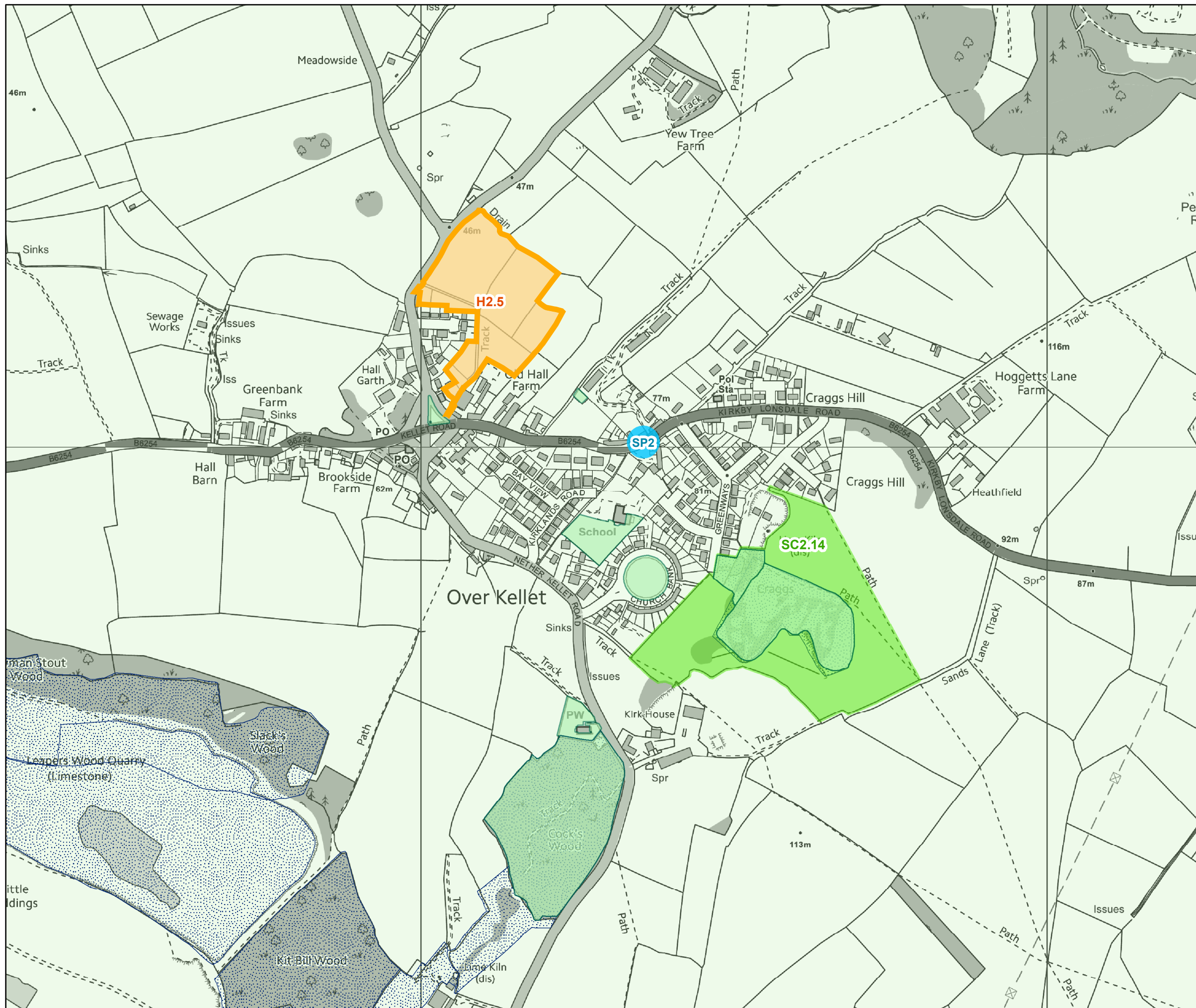
**Town Centres and Retailing**

TC1 - Retail Hierarchy for Lancaster District





## Strategic Policies and Land Allocations Policies Map - Over Kellet



## Legend

## Housing Delivery

 H2 - Rural Housing

## The Natural Environment

EN3 - Open Countryside

## EN7 - Environmentally Important Areas

 Regional\*

## Sustainable Communities

SP2 - Sustainable Settlements

SC2 - Local Green Space

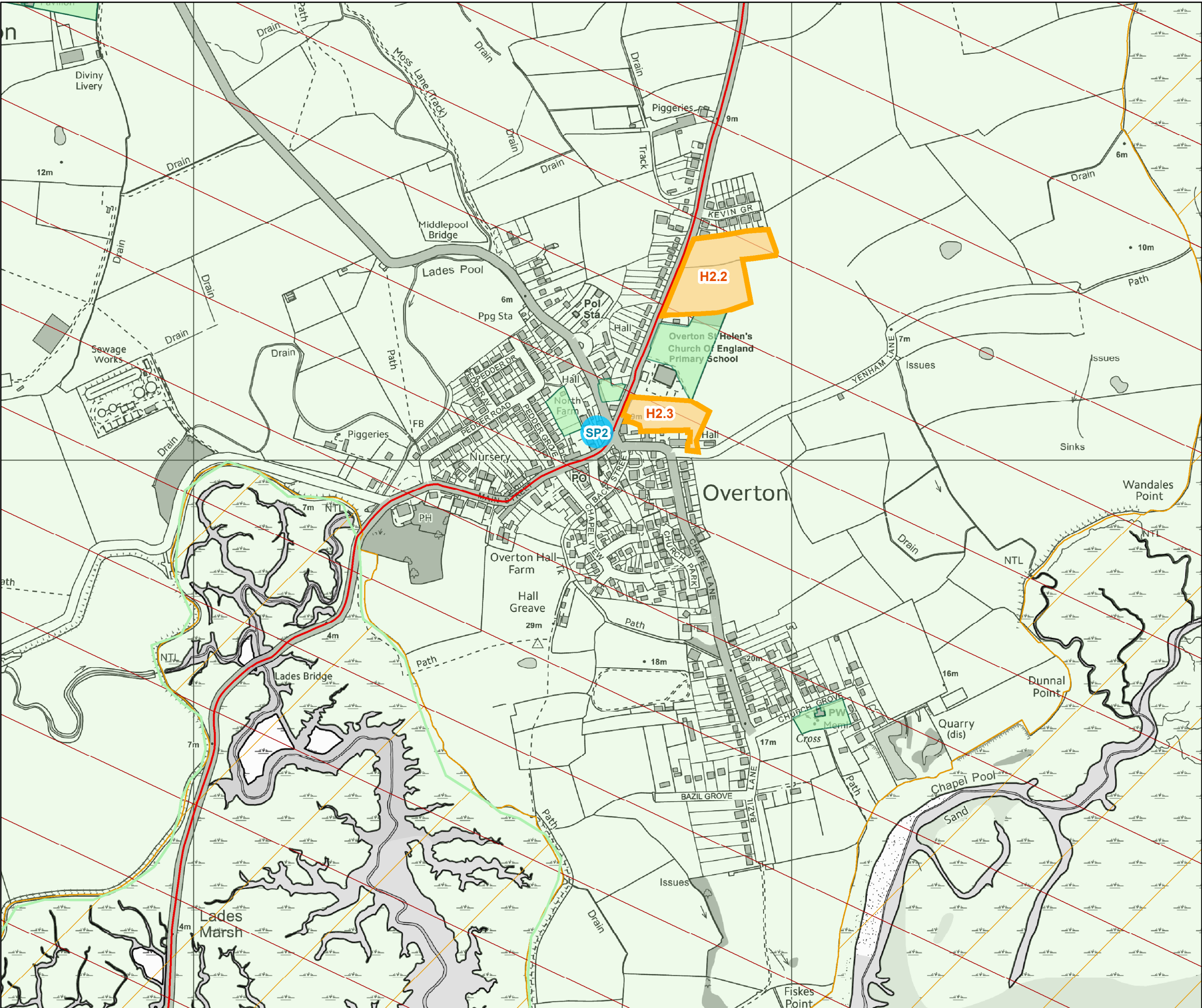
SC3 - Open Space, Recreation and Leisure



**LANCASTER**  
**CITY COUNCIL**  
*Promoting City, Coast & Countryside*



## Strategic Policies and Land Allocations Policies Map - Overton



## Legend

## Housing Delivery

## H2 - Rural Housing

## The Natural Environment

### EN3 - Open Countryside

## EN7 - Environmentally Important Areas

International\*

National<sup>3</sup>

## Sustainable Communities

SP2 - Sustainable Settlements

SC3 - Open Space, Recreation and Leisure

## T2 - Cycling Network

— Existing Cycle Route



**LANCASTER**  
**CITY COUNCIL**  
*Promoting City, Coast & Countryside*

Map produced by Lancaster City Council © Crown copyright and database rights 2019 Ordnance Survey 100025403

Date: 01/08/2019

0 0.25 0.5 1 Kilometers